

Astra

Holden. Go better. 



Go your way

It might be the look that convinces you. A bold statement of individuality that sets Astra – and those who own one – apart from the everyday crowd.

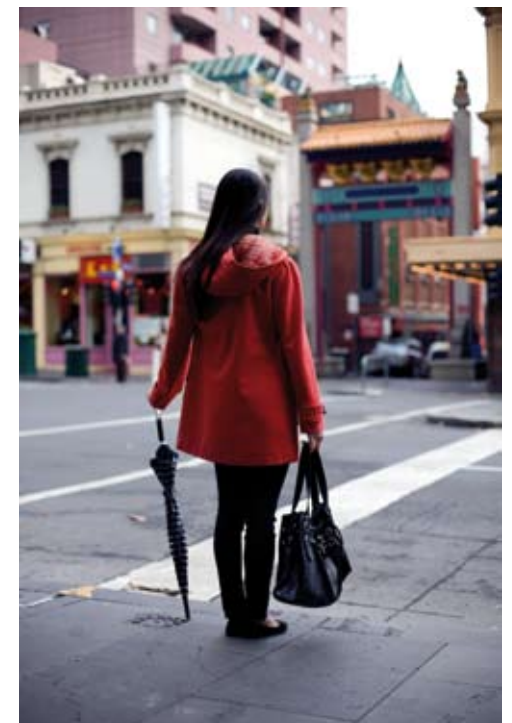
Or world-class safety. Realising that wherever you go, Astra's advanced driver defence systems – including Electronic Stability Program – will be there first, monitoring vehicle dynamics to help ensure you complete each journey safely.

Choice is another possibility. Knowing the Astra you decide upon – be it hatch, coupe, wagon or TwinTop, diesel powered or petrol – is designed specifically to fit the life you want to live.

Or equipment level. Seeing what other small cars have to offer, and recognising Astra matches it with the best of them, and then some. Or maybe it's simply how you feel behind the wheel. The way an Astra makes driving more fun. Makes you want to take the long way. Makes you want to go your way.

One thing's for certain. Whatever matters to you most, you'll have every reason to choose and enjoy a Holden Astra.

Astra **SRI**
5 door hatch



Express yourself

Powerful lines. Striking angles. Sweeping aerodynamic curves. Seamlessly integrated and stunningly executed. These are the unmistakable European design signatures that make each Astra model so compellingly and uniquely stylish.

In the five door hatch range, this design DNA is expressed through a sculpted body that flows effortlessly from its projector style headlights and chrome grille spear, to its fast back roofline and tapered rear. Combined with a sloping stance, it gives each Astra hatch – from the CD to the sporty SRi – a bold, athletic presence. A look echoed and extended in perfect proportion by the longer wheelbase Astra wagons.

The Astra coupes push these design cues to the max. The streamlined SRi with its sleek, eye-catching poise. The low slung SRi Turbo with its big sports alloys and sharper, more aggressive, performance-inspired features.

But the ultimate – the purest and most exquisite expression of Astra design – is undoubtedly the sensational TwinTop. Roof up, it's an ultra chic two-door hardtop. Roof down, it's one of the best looking four-seat, four-season convertibles around.

Astra **SRi**
Turbo coupe



Move with the times

Turn the key. Hit the streets. Drive like you mean it. Astra doesn't just look the goods, it delivers them – across the range – with a level of performance that never fails to excite.

Tuned for Australian driving conditions – as only Holden can – the CD, CDX and CDTi hatches and wagons handle with exceptional responsiveness, and keep their composure on all manner of road surfaces. From city to country. Freeway to laneway.

The TwinTop, SRi hatch and coupes raise the bar again with more involving, more exhilarating sports-tuned setups.

Sports models also feature a 'sports' switch, that quickens the steering and boosts throttle response, sharpening vehicle dynamics and intensifying your driving experience even further.

And if it's power you want, it's power you get. The 1.8 litre ECOTEC petrol is spirited and responsive. The 2.2 litre direct injection engine, a source of free-flowing power and torque right across the rev counter. The 2.0 litre turbo, an absolute head-tilter. While the 1.9 litre ECOTEC diesel can go up to an amazing 1,000+ kilometres between fills* and deliver effortless power and torque, all the way.

*Based on Opel F/C test EC/80/1268, EUDC (Hwy cycle), Manual Transmission (Hatch only)

Astra **CDTi**
diesel wagon



Double your fun

A classic convertible and sophisticated hardtop coupe all in one, the range-topping Astra TwinTop is the two cars you've always wanted.

Exceptionally stylish, its sloping stance and elegant, flowing lines are guaranteed to turn heads, all year round. While its revolutionary three-piece steel roof ensures you feel as good as you look – rain, hail or shine – as well as shielding you from road noise and maximising vehicle security.

You can raise or lower the roof at the touch of a button, even while travelling at speeds of up to 30km/hour. Thirty seconds is all it takes. The roof is also incredibly space efficient. Retracted, there's room for a full 205 litres of luggage in the boot – all of it easily accessed via the Easy Load feature, which raises the folded roof by around 25cm with push button ease. And that capacity expands to a massive 440 litres with the roof up.

But TwinTop doesn't just put a roof over your head, it surrounds you with luxury. Leather-appointed seating is standard, so too a 6-disc, 7-speaker premium audio system with steering wheel controls. And the front seats are heated, so you can drive top down when it's cool and still feel warm inside.

With a free-revving 2.2 litre direct injection ECOTEC engine under its bonnet, TwinTop also equips you with plenty of go. And like every Astra in the line-up, TwinTop protects you with world-class active and passive safety systems, including Electronic Stability Program.

Astra **TwinTop**



Featured with accessory 18" x 7.5" eleven-spoke alloy wheels



Personal space

Sit back. Relax. Enjoy the sights – and sounds. Blending dynamic contemporary design with smart ergonomics and a high level of standard equipment, Astra's roomy interior gives you the personal space you yearn for.

Instrumentation and the multifunction display communicate with at-a-glance clarity. The centre console positions the in-dash CD player and cabin comfort controls for easy access. Steering mounted buttons and thumbwheels let you adjust the audio system while keeping both hands on the wheel. Switchgear, power window and heated power mirror controls all come naturally to hand.

Built for speed and comfort, Astra's seating features deep bolstered cushions, high lateral supports and intuitive adjustments, with heated, leather-appointed sports seats standard on all CDX, SRi and TwinTop models – not to mention cruise control and a multifunction trip computer. The SRi Turbo and TwinTop also come with a premium in-dash sound system, featuring a 6-disc CD stacker.

Astra is big on the little things, too. The personal touches, like your own flip key, being able to plug your MP3 player into the audio system,* pick up your latte or water bottle from the convenient cup holders, or position the four-way adjustable steering column just how you like it.

Whatever you need to know. Whatever you need to do. Be it checking your speed, adjusting the cabin temperature, finding your perfect seating position, selecting your favourite radio station, or just being supremely comfortable, Astra's carefully thought out interior lets you do it easily – and do it in style.

Astra **SRi**
5 door hatch

* Compatible with audio system on all CD, CDX and CDTi models, SRi Hatch and SRi Coupe models only



CD model shown



World-class safety

Every model. Every body style. Every powertrain combination. When you sit behind the wheel of any new Holden Astra, you are surrounded – every kilometre of every trip – by a reinforced passenger safety cell, and advanced multi-layer driver defence system equipped with state-of-the-art active and passive safety features.

Optional on many other small cars, but standard across the entire Astra line up, these innovative, potentially life-saving features – like Electronic Stability Program – can be the difference between being in an accident, and avoiding one altogether.



Safety

Active safety

To help prevent collisions, every Astra monitors on-road dynamics every moment you're driving. Everything from the vehicle's speed, lateral acceleration and rotation, to the steering wheel angle and brake force you apply.

When normal tolerances are exceeded, one or more active safety systems instantly initiate non-intrusive counter measures to help ensure you retain maximum control of the vehicle.

Co-ordination of active safety features

Tightly integrated and fully co-ordinated, Astra's active safety systems provide you with 360° support:

- The Anti-lock Braking System (ABS), Brake Assist (BA) and Electronic Brakeforce Distribution (EBD) help you stop quickly with maximum control.
- The Traction Control System (TCS) helps minimise wheel slip when accelerating.
- The Electronic Stability Program (ESP®) helps safeguard you during turning and cornering.

ESP® Electronic Stability Program

ESP® constantly compares the vehicle's movements with the steering wheel angle to determine if the vehicle is moving in the direction you intend. If skidding appears imminent, ESP® applies brake pressure to individual wheels as appropriate and, if necessary, trims engine power. This dramatically increases turning and cornering safety, especially in 'evasive action' situations.

TCS Traction Control System

TCS is designed to minimise slippage during acceleration by recognising if either front wheel has insufficient grip, and adjusting driveforce and brakeforce accordingly. It produces greater vehicle stability on wet and icy roads, and also in 'split' conditions, such as when a vehicle has two wheels on bitumen and two on a gravel verge.

ABS Anti-lock Braking System

If wheel 'lock up' is detected under forceful braking, ABS momentarily reduces brake pressure at the affected wheel(s). This improves braking efficiency – reducing stopping distances on most surfaces – and helps the vehicle remain steerable and directionally stable.

BA Brake Assist

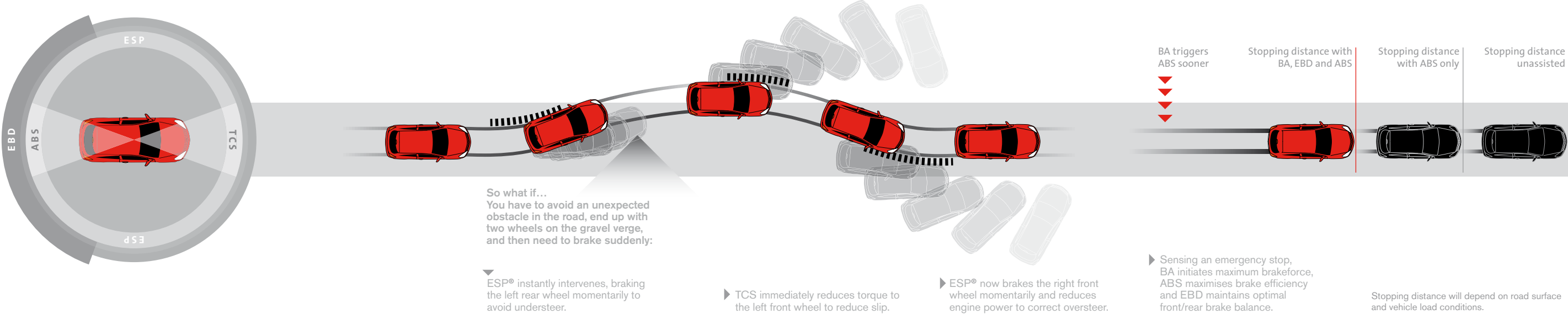
In emergency braking situations, few drivers actually press the brake pedal firmly enough to achieve maximum braking performance. BA is designed to sense how fast you press the brake pedal in an emergency, and maximises braking pressure to optimise braking performance.

EBD Electronic Brakeforce Distribution

When a vehicle brakes, weight transfers to the front wheels. By regulating the brakeforce applied to each wheel, EBD helps ensure optimal balance between front and rear brakes, which helps minimise stopping distances.

IDS^{plus} Interactive Driving System Plus with CDC Continuous Damping Control

Available on the Astra SRi Turbo, and activated by pressing the sport switch, the IDS^{plus} chassis with CDC senses changes in the vehicle dynamics and automatically stiffens or softens the suspension – in real time – resulting in more confident cornering behaviour and sharper handling with reduced body roll.



Passive safety

In an accident, it's the impact energy of the collision versus your vehicle's safety systems. That's why Astra puts these features on your side.

Standard on all models:

- 1 Full size driver's airbag
- 2 Full size passenger's airbag
- 3 Dual front side impact airbags
- 4 Front and rear crumple zones
- 5 Pedal release system
- 6 Reinforced passenger safety cell

Plus:

- 7 Curtain airbags on CDX, CDTi and SRi models

- High strength pop-up rollover protection on TwinTop

Co-ordination of passive safety features

To protect occupants from collision impulse forces, Astra uses forward and side sensors to detect the direction and severity of a collision, then co-ordinates and deploys, if necessary, the appropriate safety measures – all in just a few thousandths of a second. Roughly the time it takes to snap your fingers.

Reinforced passenger safety cell

The Astra cabin is designed around a rigid body shell with advanced safety technology fully integrated throughout. The extremely rigid driver and passenger safety cell rides on a chassis optimised to deliver dynamic handling with maximum stability.

Active rollover protection system

If the Astra TwinTop enters an uncontrolled state that could result in it rolling over, a special sensor activates two high-strength aluminium rollover bars, located behind the two rear seats, which pop up and lock firmly into position. All in a fraction of a second. The same sensor also activates the pyrotechnic seatbelt pretensioners.

Pyrotechnic seatbelt pretensioners

When an impact of sufficient severity is detected, small explosive charges force the front seatbelt anchors toward the cabin floor. This tightens the seatbelts and helps hold both driver and front passenger firmly against their seats.

Front airbags

For maximum protection in certain frontal collisions, Astra will deploy front airbags for the driver and passenger. The 60 litre driver airbag can fully inflate in 40 milliseconds, while the front passenger airbag can inflate to a full 120 litres in just 48 milliseconds.

Force limiters

Following airbag deployment, force limiters unspool the front seatbelts incrementally to minimise the risk of seatbelt related injury.

Pedal release system

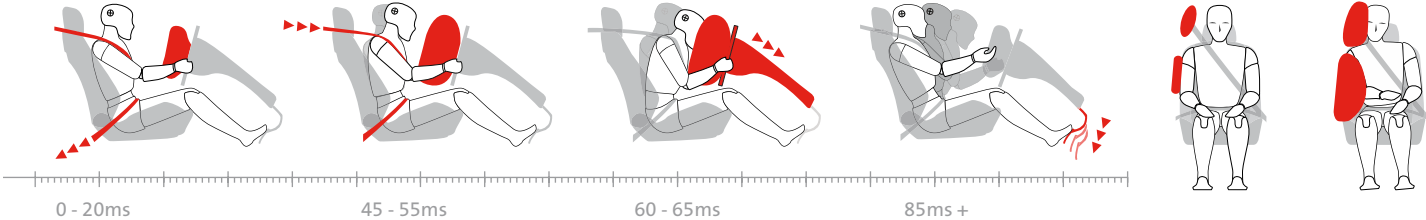
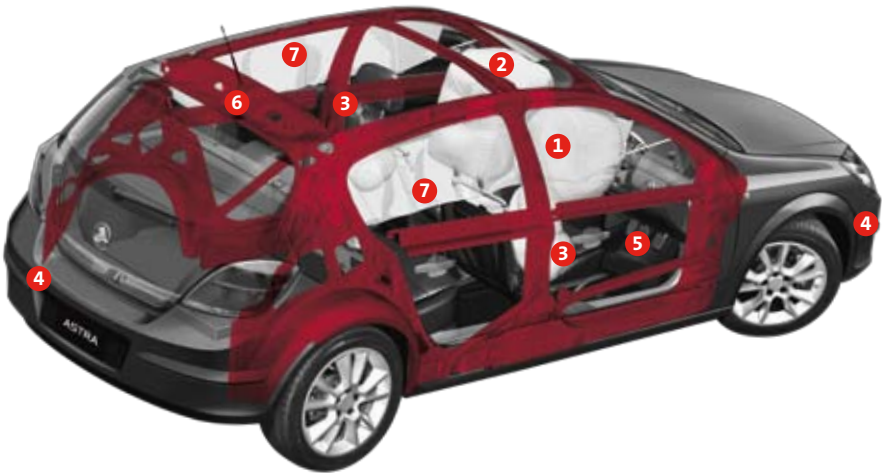
In a severe frontal impact, the brake pedal (and clutch on manual models) detaches to help prevent lower limb injury to the driver.

Side impact airbags

Astra's side impact airbags feature an enlarged 'Thorax-Pelvis' design to help protect the lower and upper body of both driver and front seat passenger.

Side curtain airbags

Standard on Astra CDX, CDTi and SRi models, side curtain airbags help provide head and upper body protection for front passengers and left and right rear seat passengers in certain side-on collisions.



CDX 5 Dr Hatch shown with 17" x 7" accessory alloy wheels

Diagrams for illustration purposes only



CD 5 door hatch

European style. World-class safety. Australian tuned ride and handling. Complete with ESP® and a long list of 'nice to haves' as standard – including 7-speaker CD audio system and air conditioning – the spacious and highly versatile Astra CD five door hatch will put a smile on your face every time you drive it.



- Specific feature highlights:
- 1.8 litre ECOTEC engine
 - 5-speed manual transmission or optional 4-speed automatic transmission
 - Electronic Stability Program (ESP®), incorporating:
 - Anti-lock Braking System (ABS)
 - Electronic Brakeforce Distribution (EBD)
 - Brake Assist (BA)
 - Traction Control System (TCS)
 - Front airbags for driver and front passenger
 - Side impact airbags for driver and front passenger
 - Projector style headlamps
 - Heated power mirrors
 - Air conditioning
 - 7-speaker, CD audio system with MP3 compatibility and auxiliary input jack
 - Steering wheel mounted audio controls
 - Multifunction centre LCD display
 - Front power windows
 - Electronic boot release



CD 5 door hatch style pack

Want a few extra features for the road? Add the Style Pack to your Astra CD hatch. For a little more, you'll drive away with stylish alloy wheels, fog lamps, full function cruise control for easier touring and the push button convenience of rear power windows.



- Includes all CD hatch specific feature highlights, plus:
- 16" seven-spoke alloy wheels with steel spare
 - Front fog lamps
 - Cruise control
 - Rear power windows



Overseas model shown

CDX 5 door hatch

If you appreciate the finer things in life, you'll value the elegant refinement of the CDX. Adding substantial luxury to Astra's stylish and spacious interior, it features heated leather-appointed front sports seats with 8-way adjustment, a leather wrap steering wheel, cruise control and trip computer. Plus the added safety of side curtain airbags.



Specific feature highlights:

- 1.8 litre ECOTEC engine
- 5-speed manual transmission or optional 4-speed automatic transmission with sport mode
- Electronic Stability Program (ESP®), incorporating:
 - Anti-lock Braking System (ABS)
 - Electronic Brakeforce Distribution (EBD)
 - Brake Assist (BA)
 - Traction Control System (TCS)
- Six airbags, including:
 - Front airbags for driver and front passenger
 - Side impact airbags for driver and front passenger
 - Side curtain airbags
- 16" alloy wheels with steel spare
- Illuminated vanity mirror
- Front and rear reading lights
- Colour coded door handles and body mouldings
- Leather-appointed seating
- Heated 8-way adjustable front sports seats with lumbar support
- Leather wrap steering wheel with wheel mounted audio controls
- Multifunction trip computer with graphic information display
- Power windows
- Projector style headlamps
- Heated power mirrors
- 7-speaker, CD audio system with MP3 compatibility and auxiliary input jack
- Electronic boot release



SRi 5 door hatch

With its sports inspired body kit, interior and 17" alloys, the hot looking Astra SRi hatch attracts admiring glances everywhere it goes. But only by getting behind the wheel can you truly appreciate the extra dimension its sports-tuned suspension adds to your every driving moment.

Includes all CDX hatch specific feature highlights plus:

- Sports tuned suspension
- 17" alloy wheels with steel spare
- Sports body kit
- Rear roof spoiler
- Black bezel projector style headlamps
- Sports instrumentation
- Leather wrap sports steering wheel
- Alloy faced pedals
- Sports Switch for sharper more responsive driving dynamics
- Sunglasses storage



CDTi Diesel 5 door hatch

Using Turbocharged Common Rail Diesel technology to maximise fuel efficiency, the feature-packed Astra CDTi hatch can travel up to 1,000 kilometres on a single tank of fuel.* Smooth. Reliable. And with power and torque to spare across a wide rev range, it is a car of the future, available today.



Specific feature highlights:

- 1.9 litre ECOTEC common rail turbo diesel engine
- 6-speed manual transmission or optional 6-speed automatic transmission with Active Select
- Electronic Stability Program (ESP®), incorporating:
 - Anti-lock Braking System (ABS)
 - Electronic Brakeforce Distribution (EBD)
 - Brake Assist (BA)
 - Traction Control System (TCS)
- Six airbags, including:
 - Front airbags for driver and front passenger
 - Side impact airbags for driver and front passenger
 - Side curtain airbags
- Sports tuned suspension (manual only)
- Sports Switch for sharper more responsive driving dynamics (manual only)
- 16" alloy wheels with steel spare
- Front and rear fog lamps
- Projector style headlamps
- Heated power mirrors
- Semi-automatic climate control air conditioning
- 7-speaker, CD audio system with MP3 compatibility and auxiliary input jack
- Leather wrap sports steering wheel with wheel mounted audio controls
- Cruise control
- Multifunction trip computer with graphic information display
- Power windows
- Electronic boot release



CDTi Diesel wagon

Striking looks. Effortless, super economical turbo diesel power. Agile handling. Fully appointed interior. And a rear cargo area that's as flexible as it is accommodating. Combining all the equipment and safety features of the CDTi hatch, with a load of extra advantages, the Astra CDTi wagon has a seemingly endless capacity to please.



Specific feature highlights:

- 1.9 litre ECOTEC common rail turbo diesel engine
- 6-speed automatic transmission with Active Select
- Electronic Stability Program (ESP®), incorporating:
 - Anti-lock Braking System (ABS)
 - Electronic Brakeforce Distribution (EBD)
 - Brake Assist (BA)
 - Traction Control System (TCS)
- Six airbags, including:
 - Front airbags for driver and front passenger
 - Side impact airbags for driver and front passenger
 - Side curtain airbags
- 16" alloy wheels with steel spare
- Front and rear fog lamps
- Projector style headlamps
- Semi-automatic climate control air conditioning
- 7-speaker, CD audio system with MP3 compatibility and auxiliary input jack
- Leather wrap sports steering wheel with wheel mounted audio controls
- Cruise control
- Multifunction trip computer with graphic information display
- Power windows
- Fully carpeted 454 litre load area, expandable to 1,549 litres with both 60/40 split rear seats folded flat
- Retractable load compartment cover
- Wide rear opening with protective metal load plate
- Tinted load area windows
- Alloy brushed roof rails
- Rear cargo power socket

* Based on Opel F/C test EC/80/1268, EUDC (Hwy cycle), Manual Transmission (hatch only).



CD wagon

A flexible load carrier that accommodates your wish list and your budget, the Astra CD wagon puts a tick in every box. Distinctive, aerodynamic design. Spacious, fully equipped cabin. Responsive 1.8 litre ECOTEC engine. Comprehensive active and passive safety features. And a cargo area that's big, versatile and easy to access.



Specific feature highlights:

- 1.8 litre ECOTEC engine
- 4-speed automatic transmission
- Electronic Stability Program (ESP®), incorporating: Anti-lock Braking System (ABS) Electronic Brakeforce Distribution (EBD) Brake Assist (BA) Traction Control System (TCS)
- Front airbags for driver and front passenger
- Side impact airbags for driver and front passenger
- Projector style headlamps
- Heated power mirrors
- Air conditioning
- 7-speaker, CD audio system with MP3 compatibility and auxiliary input jack
- Steering wheel mounted audio controls
- Multifunction centre LCD display
- Front power windows
- Fully carpeted 454 litre load area expandable to 1,549 litres with both 60/40 split rear seats folded flat
- Low load area floor
- Retractable load compartment cover
- Roof rails
- Rear cargo power socket



CDX wagon

All the features of the Astra CD wagon. All the looks. All the performance. All with a host of extras, including heated leather-appointed front sports seats with 8-way adjustment, leather wrap steering wheel, cruise control, trip computer, side curtain airbags and 16" alloys. Complete in every way, Astra CDX is the ultimate. If you thought a small wagon couldn't be stylish, take a long hard look – and an even longer test drive.



Includes all CD wagon specific feature highlights, plus:

- Side curtain airbags
- 16" alloy wheels with steel spare
- Front fog lamps
- Colour coded door handles and body mouldings
- Leather-appointed seating
- Heated 8-way adjustable front sports seats with lumbar support
- Leather wrap steering wheel with wheel mounted audio controls
- Cruise control
- Multifunction trip computer with graphic information display
- Power windows
- Illuminated vanity mirror
- Alloy brushed roof rails
- Wide rear opening with protective metal load plate
- Tinted load area windows

Overseas model shown



SRi coupe

Arrive in style. Leave when you're ready. When you own the SRi coupe you go your way, all the way. Sleek and sophisticated on the outside. Smart and elegant on the inside. The complete package, this totally compelling mix of form and function comes equipped with all the luxury necessities you need to enjoy every journey to the full.

Specific feature highlights

- 1.8 litre ECOTEC engine
- 5-speed manual transmission or optional 4-speed automatic transmission
- Electronic Stability Program (ESP®), incorporating:
 - Anti-lock Braking System (ABS)
 - Electronic Brakeforce Distribution (EBD)
 - Brake Assist (BA)
 - Traction Control System (TCS)
- Six airbags, including:
 - Front airbags for driver and front passenger
 - Side impact airbags for driver and front passenger
 - Side curtain airbags
- Sports tuned suspension
- 17" alloy wheels with steel spare
- Sports body kit
- Rear roof spoiler
- Black bezel projector style headlamps
- Front and rear fog lamps
- Heated power mirrors
- Sports Switch for sharper more responsive driving dynamics
- Sports instrumentation
- Leather-appointed seating
- Heated 8-way adjustable front sports seats with lumbar support
- Semi-automatic climate control air conditioning
- 7-speaker, CD audio system with MP3 compatibility and auxiliary input jack
- Leather wrap sports steering wheel with wheel mounted audio controls
- Cruise control
- Multifunction trip computer with graphic information display
- Alloy faced pedals
- Power windows
- Electronic boot release



SRi Turbo coupe

Sublime sports styling. Jaw-dropping turbocharged acceleration. Supreme luxury. Complete with comprehensive, state-of-the-art safety systems and race bred IDS^{plus} chassis with continuous damping control, the SRi Turbo is the awesome and absolute performance leader of the Astra line up.

Includes all SRi Coupe specific feature highlights, plus:

- Turbocharged 147kW* 2.0 litre ECOTEC engine
- 6-speed manual transmission
- Interactive Driving System Plus (IDS^{plus}) with Continuous Damping Control (CDC) system
- 18" alloy wheels with steel spare
- Electronic climate control air conditioning
- 7-speaker premium audio system with 6 disc in-dash CD player
- Leather wrap sports profile gear shifter
- Leather wrap sports profile steering wheel with wheel mounted audio controls
- Unique front and rear sports fascias

* Maximum figure as per ECE regulations

Features

[illegible]

- Standard
- Optional
- P Option in package, with one or more others

[illegible]

Technical specifications

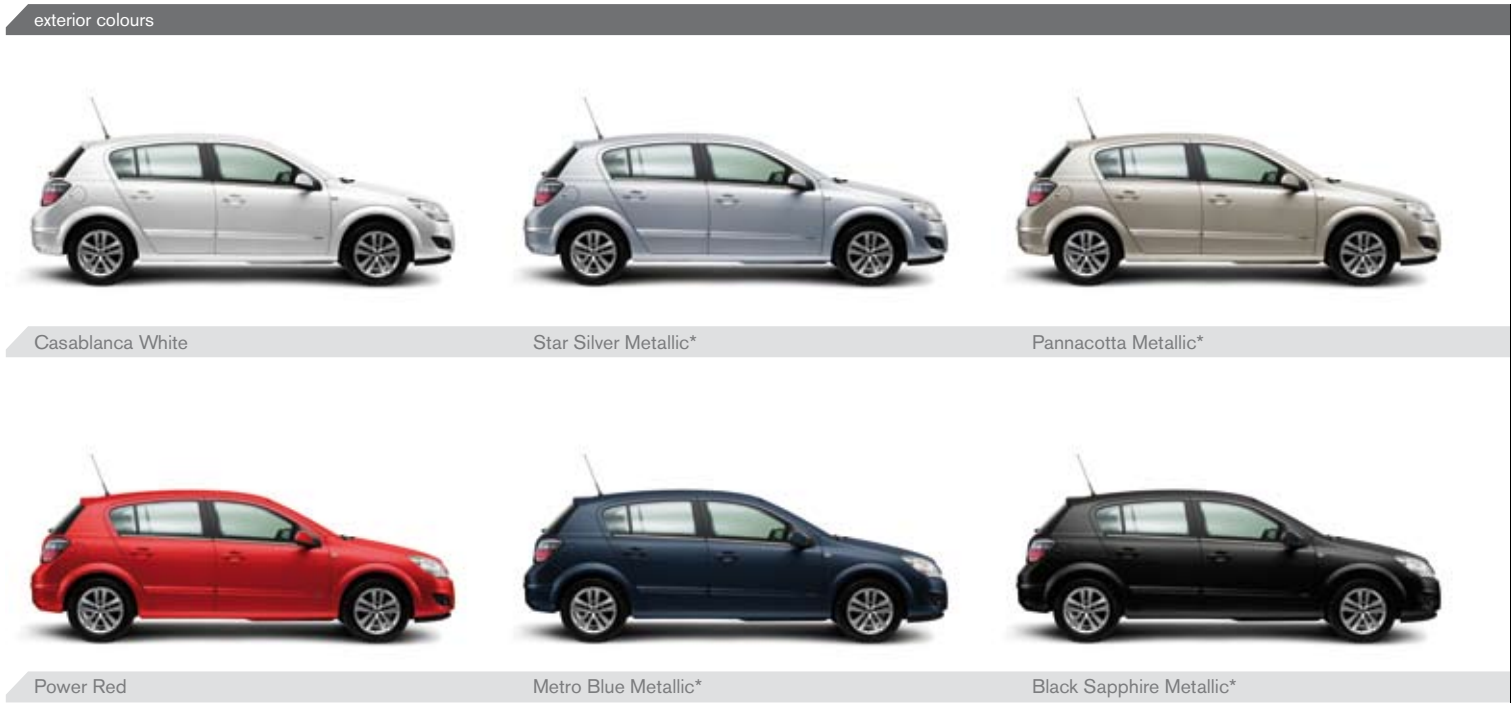
	Selected engine specifications
1.8 Litre ECOTEC Engine	Four cylinders. Double overhead camshafts operate four valves per cylinder. Sequential multipoint fuel injection. Distributorless direct ignition system. Continuous Variable Camshaft Phasing. Electric cooling fan. Coil-at-plug ignition. Cylinder selective knock control. Electronic Throttle Control. Aluminium cylinder head.
1.9DTH Diesel ECOTEC Engine	Four cylinders. Double overhead camshafts operate four valves per cylinder. Latest generation common-rail direct injection. Electric cooling fan. Exhaust-gas turbocharger with variable turbine geometry and intercooling. Electronically controlled exhaust-gas recirculation with water cooling. Electronically powered swirl control. Electronic Throttle Control. Aluminium cylinder head.
1.9DT Diesel ECOTEC Engine	Four cylinders. Single overhead camshaft which operates two valves per cylinder. Latest generation common-rail direct injection. Electric cooling fan. Exhaust-gas turbocharger with variable turbine geometry and intercooling. Electronically controlled exhaust-gas recirculation with water cooling. Electronic Throttle Control. Aluminium cylinder head.
2.0 Litre Turbo ECOTEC Engine	Four cylinders. Double overhead camshafts operate four valves per cylinder. Sequential multipoint fuel injection. Electronic Spark Timing (EST) with Hall sensor. Cylinder selective knock control and Direct Ignition System (DIS). Electric cooling fan. Variable intake manifold. Coil-at-plug ignition. Turbocharger with intercooler. Electronic Throttle Control. Aluminium cylinder head.
2.2 Litre Direct ECOTEC Engine	Four cylinders. Double overhead camshafts, driven by chain, operate four valves per cylinder. Variable high-pressure direct fuel injection. Mass Air Flow meter (MAF) controlled combustion chamber. Direct fuel injection with Electronic Spark Timing (EST), knock control, 2 oxygen sensors. Electronic cooling fan. Cylinder inlet port flaps vary airflow according to engine load. Electronic ignition map with coil-at-plug ignition. Electronic throttle control. All aluminium engine with two balance shafts and dual-mass flywheel.

	1.8 Litre ECOTEC	1.9DTH & 1.9DT Diesel ECOTEC	2.0 Litre Turbo ECOTEC	2.2 Litre Direct ECOTEC
Capacity (cc)	1796	1910	1998	2198
Power (ECE, kW)#	103 @ 6300rpm	DTH Man: 110 @ 4000rpm DT Auto: 88 @ 3500-4000rpm	147 @ 5400rpm	110 @ 5600rpm
Torque (ECE, Nm)#	Man: 175 @ 3800rpm Auto: 170 @ 3800rpm	DTH Man: 320 @ 2000-2750rpm DT Auto: 280 @ 2000-2750rpm	262 @ 4200rpm	210 @ 4000rpm
Recommended fuel	ULP	Diesel	PULP	ULP
Alternative	PULP for slightly higher performance	–	–	PULP for slightly higher performance
Fuel tank (L)	52	52	52	52
Brakes	4 wheel disc brakes. Front ventilated	4 wheel disc brakes. Front ventilated	4 wheel disc brakes. Front ventilated	4 wheel disc brakes. Front ventilated
Electronic Stability Program	Standard	Standard	Standard	Standard
Suspension				
front	Independent. MacPherson strut. Decoupled strut mounts. Gas pressure dampers. Coil springs. Stabiliser bar	Independent. MacPherson strut. Decoupled strut mounts. Gas pressure dampers. Coil springs. Stabiliser bar	IDS ^{Plus} Suspension. Independent. MacPherson strut. Decoupled strut mounts. Continuously Controlled Dampers. Coil springs. Stabiliser bar.	Independent. MacPherson strut. Decoupled strut mounts. Gas pressure dampers. Coil springs. Stabiliser bar
rear	Compound torsion beam and twin trailing arms. Progressive rate miniblock double conical coil springs. Gas pressure dampers	Compound torsion beam and twin trailing arms. Progressive rate miniblock double conical coil springs. Gas pressure dampers	Compound torsion beam and twin trailing arms. Progressive rate miniblock double conical coil springs. Continuously Controlled dampers	Compound torsion beam and twin trailing arms. Progressive rate miniblock double conical coil springs. Gas pressure dampers
Service	The complimentary inspection is due at 3,000km or 3 months (whichever occurs first). The first service is due at 15,000km or 12 months (whichever occurs first) and then every 15,000km or 12 months (whichever occurs first) since the last service. Additional services may be required under certain driving conditions such as when towing (refer to owner's handbook).			

* Maximum figures as per ECE regulations
For further technical specifications visit holden.com.au

Exterior colours

visit holden.com.au for further colour and trim information



	exterior colours						interior trim
model	Casablanca White	Star Silver*	Pannacotta*	Power Red	Metro Blue*	Black Sapphire*	
5 Dr Hatch							
CD	●	●	●	●	●	●	Charcoal Alpha cloth
CD Style Pack	●	●	●	●	●	●	Charcoal Alpha cloth
CDX	●	●	●	●	●	●	Charcoal leather appointed seats
CDTi	●	●	●	●	●	●	Charcoal Tabita cloth
SRi	●	●		●		●	Charcoal leather appointed seats
Wagon							
CD	●	●	●	●	●	●	Charcoal Alpha cloth
CDX	●	●	●	●	●	●	Charcoal leather appointed seats
CDTi	●	●	●	●	●	●	Charcoal Tabita cloth
Coupe							
SRi	●	●		●		●	Charcoal leather appointed seats
SRi Turbo		●		●		●	Charcoal leather appointed seats
TwinTop		●		●	●	●	Charcoal leather appointed seats

Variations between colours shown and actual paint colours/interior trim colours may occur due to the brochure printing process. Actual vehicle colours may appear different under certain light conditions.
*Metallic paints are available at an additional cost and certain colours may not be available from time to time.
Some colours may be Dealer order only and additional time for delivery may be required.
Customers are encouraged to contact their Holden Dealer for current colour availability.

Customer care

easy purchase options	ownership benefits
Finance	Holden Service
SmartChoices, provided by GMAC Financial Services, is an array of automotive finance products designed to help the dream of driving a new Holden become a reality. Just select the product, term and payment structure that best suits your lifestyle, your Holden Dealer can provide more information. ¹	With one of the largest Service Networks in the country, Holden Dealers can supply an enviable level of customer care. Only Holden Dealership technicians have access to regular Holden factory training and equipment.
Insurance	Holden New Vehicle Warranty
Holden Insurance offers a range of competitively priced insurance products, providing tailor-made protection, at the level of cover you need. For more information, call the Holden Insurance hotline on 1300 784 026. ¹	Every new Holden comes with a New Vehicle Warranty, covering your Holden for 3 years ⁵ or 100,000 kilometres, whichever comes first. This factory backed warranty covers items including the engine, transmission, interior and exterior components. Refer to your Owner's handbook or see your Holden Dealer for full terms, conditions and exclusions.
Holden Leasing	Holden PLUS Extended Factory Warranty
Businesses of all sizes are now accessing vehicle leasing options with Holden Leasing. We operate nationally through the Holden Dealer Network and our dedicated service and support team. Our people are responsive professionals who understand your business and what it means to deliver total fleet management solutions. To find out how Holden Leasing can help you, call us on 1800 022 077.	Holden also offers Holden PLUS Extended Factory Warranty. Holden PLUS is a complete extension of your New Vehicle Warranty, giving you peace of mind because your car is factory backed for up to 3 additional years. The very same items covered under the New Vehicle Warranty will continue to be covered under Holden PLUS, without exclusion. The Holden PLUS Extended Factory Warranty can be purchased through your local Holden Dealer at the same time as your Holden vehicle purchase. See your Holden Dealer or call 1300 308 062 for full terms and conditions.
GM Holden Card	24 Hour Roadside Assistance
The GM Holden Card can assist you to get into a new Holden sooner. 10% of your credit card purchases go towards a Rebate of up to \$3,000 on your new Holden ² (depending on model). That's up to \$1 saving on your new Holden for every \$10 spent. There are a range of extra features including up to 45 days interest free ³ on credit card purchases and a competitive interest rate. Apply ⁴ online at www.holden.com.au/mastercard , or call the GM Holden Card 24hr helpline on 131 200.	Provided for the first year of your new Holden's life ⁵ . Holden Roadside Assistance is one of Australia's most comprehensive assistance packages with over 3,000 Roadside Assistance patrols nationwide ⁶ . There to help with even the smallest service, the toll-free Roadside Assistance hotline is always open, 1800 817 100.
	For more information contact Holden Customer Assistance on 1800 033 349 Monday to Friday 8am to 7pm or Saturday 9am to 1pm EST or visit www.holden.com.au

¹ Subject to approval. ² The maximum GM Holden Card 'Core Rebate' (plus additional 'Bonus Rebate' accumulated via the Partner Program) applicable for each vehicle, accrued over a maximum of five years may be applied per eligible vehicle purchased. For the maximum Rebate applicable for each vehicle refer to the 'Maximum Rebate Levels' table at www.westpac.com.au/holden. Vehicle sales for which a fleet allowance is paid are not eligible for GM Holden Card Rebate. Earning and redemption of Rebate towards a new Holden is subject to the GM Holden Card Rebate Program Rules. ³ The interest-free period applies where the card account is fully paid by the due date each month. ⁴ GM Holden Card is approved by Westpac. Applications are subject to Westpac's normal lending criteria. ⁵ From date of first registration. ⁶ In remote or sparsely populated areas you may experience delay in obtaining Roadside Assistance. Refer to the Customer Care brochure in your glovebox for full terms and conditions of this service.

holden.com.au

ESP® is a registered trademark of Daimler Chrysler AG

A word about this catalogue. We have tried to make this catalogue as comprehensive and factual as possible. However, since the time of printing some of the information you'll find here may have been updated. Also, some of the equipment shown or described through this catalogue may have been changed and / or is available at extra cost. Further, GM Holden Ltd ABN 84 006 893 232, reserves the right to make changes at any time without notice, in prices, colours, materials, equipment and models. Your Holden Dealer has details, and before ordering, you should ask them to bring you up to date. No Holden Dealer or other person is authorised or permitted to give or make any statement, assertion or undertaking in relation to the quality, performance characteristics, descriptions or fitness for any purpose of any Holden product which is at variance with any written statement, assertion or undertaking on any of these subjects given or made by GM Holden Ltd in its published sales literature, and GM Holden Ltd does not accept any liability for any such unauthorised action. GM Holden Ltd has authorised Dealers in many parts of Australia for the sale of service parts and the provision of service to owners of Holden's products. Every endeavour is made to ensure that such Dealers carry adequate stocks of service parts, but GM Holden Ltd doesn't make any promise other than that contained in the New Vehicle Warranty given by GM Holden Ltd that such parts or service facilities will be available at any specific location or at any particular time. Express warranties offered for Holden products are subject to the conditions set out in all vehicle handbooks. Details also available from GM Holden Ltd on request. Copyright GM Holden Ltd. July 2008. emerstudio ASTAH0708 AD12614