



DRIVEN AT HEART



ROADSTER



THE MORGAN ROADSTER

WHEN YOU DRIVE A ROADSTER, YOU'RE NOT JUST DRIVING A CAR. YOU'RE BECOMING PART OF A PROUD MOTORING HERITAGE. A HERITAGE OF BUILDING UNIQUELY HAND-CRAFTED CARS WHICH GOES BACK NEARLY A CENTURY.



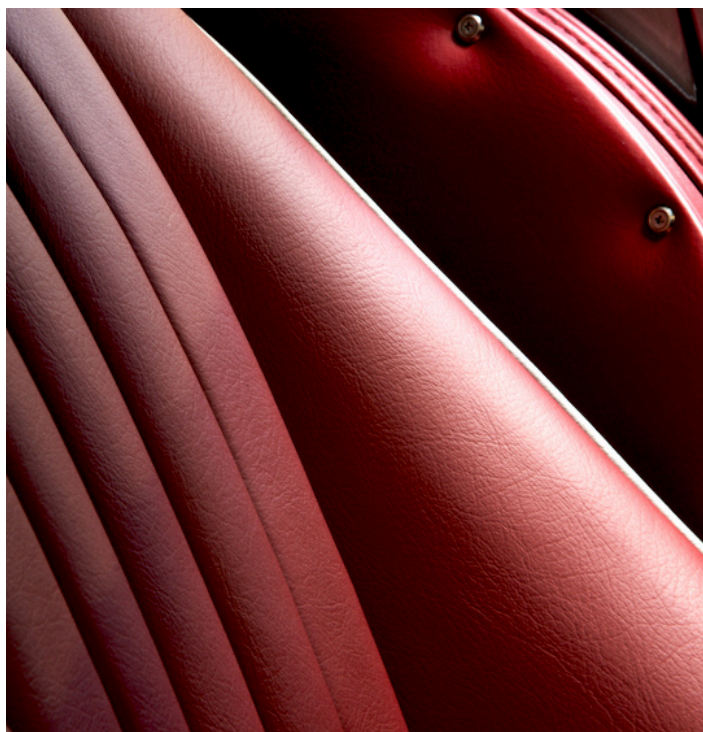
A DASHING PRESENCE

The new Roadster matches the classic Morgan motoring experience with sensational performance. At its heart lies a highly advanced new power unit which makes it lighter, more agile and faster.

Its powerful new 223 Bhp 3.0 litre engine can take you from 0 to 60 mph in a blistering 4.9 seconds.

Whilst its refined suspension, low centre of gravity and near perfect weight distribution ensure that this sports car always maintains outstanding balance and poise.

The Roadster. Proof that classic principles can be thrillingly evolved.



AESTHETIC DELIGHT

While fashions come and go, true beauty never fades. One glance at the grand, sweeping lines of the Roadster tells you that you are in the presence of an iconic sports car.

An elegance that can be observed in even the finest details. Look inside and you will see classic clocks set inside a subtly refined walnut dashboard. Then as your gaze sweeps forward over the Roadster's distinctive long bonnet, you begin to realise that this car can stir the soul even before you turn the key in the ignition.

NATURAL ELEGANCE

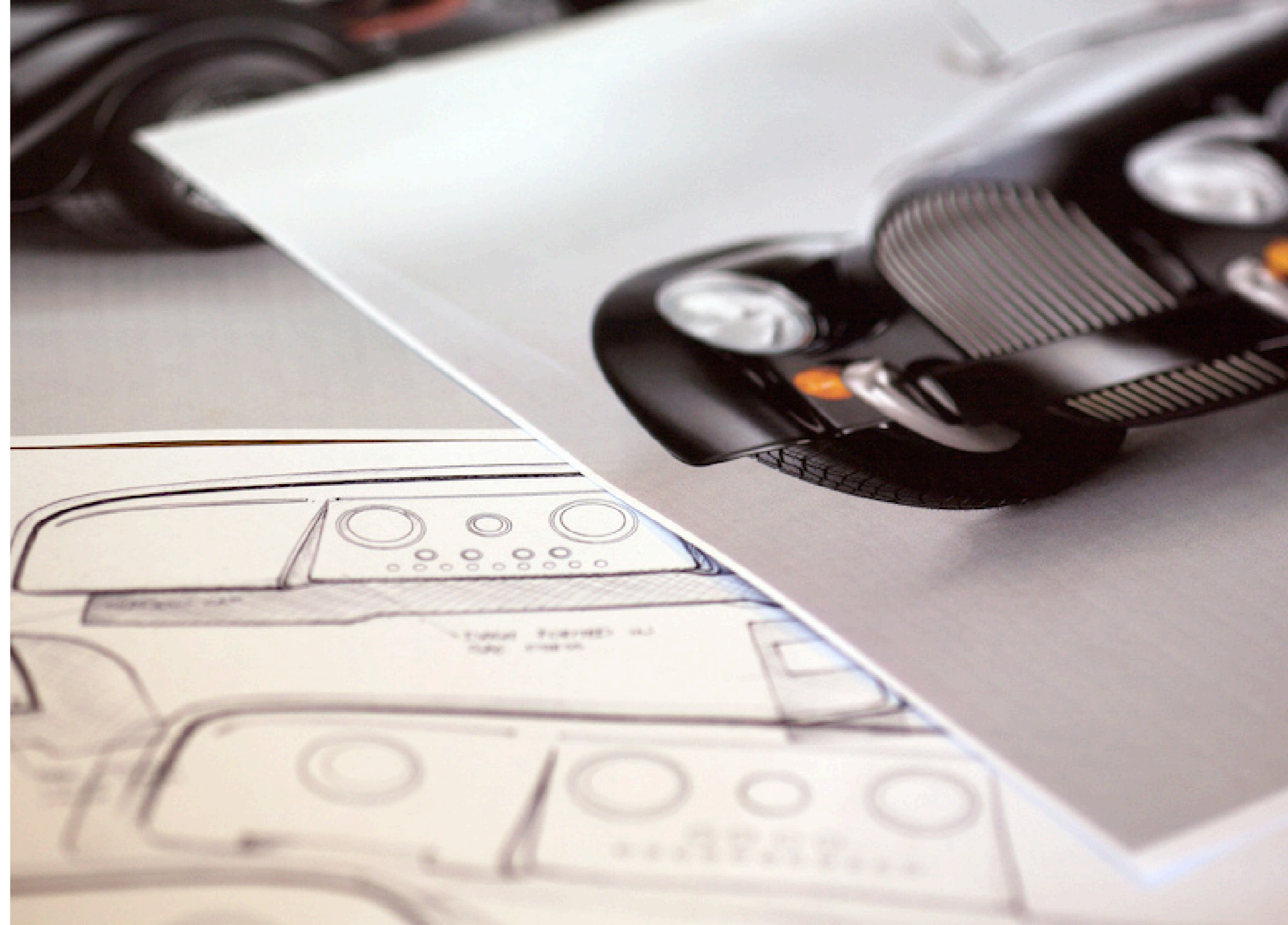


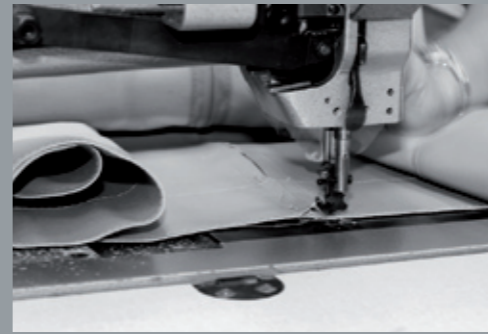
THE HEART OF A MORGAN

Central to every Morgan is our pre-eminent mastery of creating handmade sports cars. Qualities that are exemplified in the Roadster.

Here, traditional coach-building techniques are employed alongside the highest quality materials. Aluminium coachwork is built around a beautifully crafted ash frame, underpinned by a solid steel chassis.

A level of craftsmanship that makes the Roadster an individual pleasure in a mass-produced world.

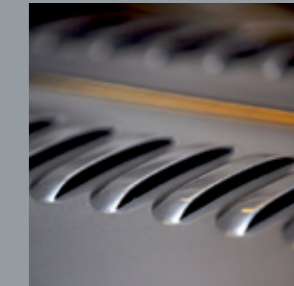
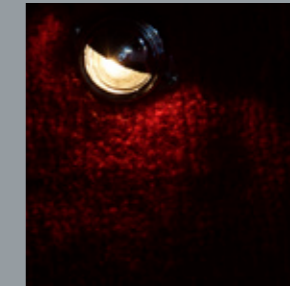
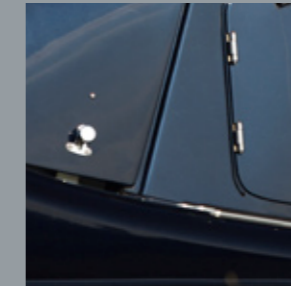
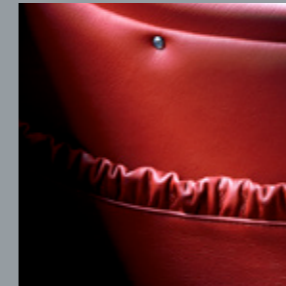




HAND CRAFTED



WORLD CLASS TECHNOLOGY 21ST CENTURY ENGINEERING



Even timeless icons must adapt to a changing world. The Roadster comes equipped with the latest lightweight 3.0 litre V6 engine technology which helps provide greater fuel economy and lower CO₂ emissions.

To discover how a 20th Century classic is moving purposefully into the 21st Century, contact your local dealer or visit morgan-motor.co.uk

Engine
2967cc V6 valve

Max Power
223 Bhp @ 6150 rpm

Max Torque
280 Nm (206lb/ft) @ 4900 rpm

Mph / 1000rpm
23.7

Fuel Consumption
Urban: 20.3 (13.9)
Extra urban: 38.2 (7.4)
Combined: 28.9 (9.8)
Co₂: 2231.8 G/100km

Performance
0-62: 4.9 seconds

Top speed mph
134

Suspension & steering
Front
Independent sliding pillar with coil springs & gas filled telescopic shock absorbers

Back
Semi-elliptic leaf springs with gas filled telescopic shock absorbers

Alloy wheels
15" 205/60



DRIVEN AT HEART