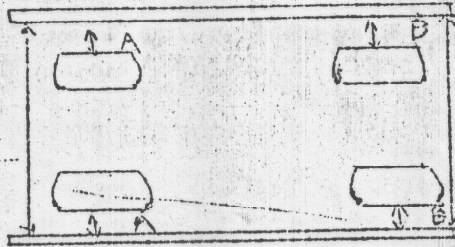


TO ALIGN WHEELS



Set two bars at hub height, one on each side of the car so that C and D are equal and A equals A and B equals B, and then set front and rear wheels as follows. N.B. All rigging must be done with car blocked and loaded down to the designed RIDE LEVEL front and rear.

Front: 1/16" toe-in on each wheel measured on the side-wall bead with the steering wheel central.

Rear: 1/8" toe-in on each wheel measured as above.

Castor: Front - 5°.

Camber: Front - 3/4° negative.

Camber: Rear - Dunlop 600 x 13 - 1° negative.
Firestone 600 x 13 - 3/4° negative.

Anti-Roll Bars:

Front - 5/8" diameter.
Rear - 1/2" diameter.