



MERCURY | NEW DOORS OPENED

## '08 Mercury Mountaineer





SPECIFICATIONS

MOUNTAINEER

POWERTRAIN/FUNCTIONALITY

	MOUNTAINEER	MOUNTAINEER PREMIER
4.0L 2-valve SOHC V-6 engine with 5-speed automatic transmission	■	■
4-wheel power disc brakes with Anti-lock Brake System (ABS)	■	■
Class II trailer hitch receiver with 4-pin electrical connector and 3500-lb. towing capacity	■	■
Front and rear independent suspensions	■	■
Rear-wheel drive (4x2)	■	■

EXTERIOR

	MOUNTAINEER	MOUNTAINEER PREMIER
17" machined-aluminum wheels with P245/65R17 all-terrain BSW tires	■	
18" satin-aluminum chrome-clad wheels with P235/65R18 all-season BSW tires		■
Black roof rails	■	■
Color-keyed running boards		■
Easy Fuel™ capless fuel-filler system	■	■
Fog lamps	■	■
Intermittent rear wiper with washer	■	■
Keyless-entry keypad	■	■
Power, heated sideview mirrors with security approach lamps	■	■
Privacy glass for rear doors, rear quarter windows and liftgate window	■	■
Satin-aluminum roof rails, mirror caps and exhaust tip		■
Solar-tinted windshield and front door glass	■	■
Speed-sensitive, intermittent windshield wipers	■	■

INTERIOR

	MOUNTAINEER	MOUNTAINEER PREMIER
1st-row cloth bucket seats with 6-way power driver seat, including manual lumbar and recline	■	
1st-row leather-trimmed bucket seats with Alcantara® inserts, 10-way power driver seat including power lumbar, and manual passenger seat		■
2nd-row fold-flat 60/40 split bench seat with 2-way adjustable head restraints and integrated seat restraints for middle passenger	■	■
3rd-row vinyl-trimmed 50/50 split bench seat		■
4-line message center with compass, distance-to-empty, outside temperature and other information	■	■
Auto-dimming rearview mirror	■	■
Color-keyed, leather-wrapped steering wheel with secondary audio and cruise controls	■	■
Dual-zone Electronic Automatic Temperature Control		■
Front center floor console with storage bin, power point and audio input jack; 2 front and 2 rear cupholders; front and rear power points; low heat vents and high air conditioning register	■	■
Illuminated visor vanity mirrors	■	■
Mercury SYNC™ voice-activated communications and entertainment system		■
Overhead console includes 2 map lights with dome function, sunglasses holder and garage door opener holder (except when Auxiliary Climate Control or moonroof is ordered)	■	■
Power door locks and windows with one-touch-down driver-window feature	■	■
Premium AM/FM stereo/single-CD player and audio input jack (located in front center floor console)	■	■
Remote keyless-entry system with 2 key fobs, panic alarm button and illuminated-entry system	■	■
Tilt steering column	■	■

SECURITY/SAFETY

	MOUNTAINEER	MOUNTAINEER PREMIER
Intelligent Safety System™ with adaptive steering column; driver and front-passenger adaptive load-limiting retractors; driver and front-passenger front airbags¹ with adaptive venting and front-passenger adaptive tether; driver and front-passenger front-seat side airbags;¹ and Front-Passenger Sensing System AdvanceTrac® with RSC® (Roll Stability Control™)	■	■
Lower anchors and tether anchors for child-safety seats (LATCH) for all 2nd-row seating positions, and tether anchor for 3rd-row center position	■	■
Safety belts – 3-point safety belts for all seating positions	■	■
Safety Canopy® System with side-curtain airbags¹ for 1st- and 2nd-row-outboard passengers, with rollover sensor	■	■
SecuriLock® passive anti-theft ignition system	■	■
Tire Pressure Monitoring System	■	■

■ STANDARD □ AVAILABLE

AVAILABLE FEATURES

	MOUNTAINEER	MOUNTAINEER PREMIER
20" polished-aluminum wheels with BSW tires		□
4.6L 3-valve SOHC V-8 engine with 6-speed automatic transmission		□
All-weather floor mats² – Front and rear, Ebony-colored	□	□
Color-keyed running boards	□	
Full-time All-Wheel-Drive (AWD) system	□	□
Leather-trimmed front bucket seats with perforated leather inserts and 10-way power driver seat, including power lumbar and recline		□
Leather-trimmed, heated front bucket seats with perforated leather inserts and 10-way power driver seat, including power lumbar, recline, memory and easy entry/exit, and 6-way power passenger seat with manual lumbar		□
Mercury SYNC voice-activated communications and entertainment system	□	
Power-adjustable pedals³	□	□
Power Code™ Remote Start System²⁴	□	□
Quad bucket seating⁵ with recline-and-fold feature, plus 2nd-row center floor console with 2 cupholders	□	□
Rear-Seat DVD Entertainment System – Overhead DVD player with 8" pull-down screen, 2 sets of wireless headphones and remote control		□
Reverse Sensing System	□	□
Roof-rail crossbars	□	□

AVAILABLE PACKAGES

	MOUNTAINEER	MOUNTAINEER PREMIER
<b>3rd-row Seat Package</b> – Includes 3rd-row 50/50 split bench seat and Auxiliary Climate Control with controls for driver and rear seat occupants	□	
<b>3rd-row Seat Elite Package</b> – Includes 3rd-row PowerFold™ 50/50 split bench seat and Auxiliary Climate Control with controls for driver and rear seat occupants		□
<b>Amenities Package</b> – Includes power-deployable running boards, Universal Garage Door Opener and Reverse Sensing System		□
<b>Chrome Package</b> – Includes 18" bright chrome-clad wheels and chrome grille, roof rails, mirror caps, taillamp surrounds, badging, beltline, bumper insert plate surround and license plate appliqué		□
<b>Comfort Package</b> – Includes leather-trimmed, heated front bucket seats with 10-way power driver seat, including power lumbar, recline, memory and easy entry/exit; 6-way power passenger seat with manual lumbar; and Dual-zone Electronic Automatic Temperature Control	□	
<b>Heated Package</b> – Includes heated front bucket seats with perforated inserts and 10-way power driver seat, including power lumbar, recline, memory and easy entry/exit; 6-way power passenger seat with manual lumbar; and heated windshield		□
<b>Moon &amp; Tune Elite Package</b> ⁶ – Includes power moonroof; Audiophile® Sound System with AM/FM stereo, 6-disc in-dash CD changer with MP3 capability, 7 premium speakers including an 8" subwoofer, 290-watt peak output and 6-month SIRIUS Satellite Radio⁷ subscription	□	□
<b>Navigation/Moon &amp; Tune Package</b> – Includes voice-activated, DVD-based Navigation System; power moonroof; Audiophile Sound System with AM/FM stereo, 6-disc in-dash CD changer with MP3 capability, 7 premium speakers including an 8" subwoofer, 290-watt peak output and 6-month SIRIUS Satellite Radio subscription		□
<b>Trailer Tow Upgrade Package</b> – Class III/IV trailer hitch receiver with 4-/7-pin electrical connectors	□	□

¹Always wear your safety belt and secure children in the rear seat. ²Dealer-installed Genuine Mercury Accessory. See your dealer for details. ³Available with or without memory feature. ⁴Requires and only available with automatic transmission. ⁵Requires 3rd-row Seat Package or 3rd-row Seat Elite Package. Not available with cloth seats or Alcantara inserts. ⁶Includes medium overhead console when optioned with Auxiliary Climate Controls. ⁷Service not available in Alaska or Hawaii. See your Lincoln Mercury Dealer or contact SIRIUS at 1-888-539-7474 for more information.

Only use mobile phones and other devices, even with voice commands, when it is safe to do so, and use extreme caution. Driving while distracted may take the driver's focus off the road, which can result in loss of vehicle control, accident and injury. The driver's primary responsibility is the safe operation of the vehicle.

©2007 SIRIUS Satellite Radio Inc. "SIRIUS," the SIRIUS dog logo and "The Best Radio on Radio" are registered trademarks of SIRIUS Satellite Radio Inc. Alcantara is a registered trademark of Alcantara Spa, Italy. Audiophile is a registered trademark of Audiophile, Inc.



SPECIFICATIONS

**DIMENSIONS** (1st/2nd/3rd row)

Wheelbase 113.7"  
Length 193.5"  
Width (excluding mirrors) 73.5"  
Height (with options) 72.8"  
Minimum running ground clearance 8.7"  
Head room 39.8"/38.7"/37.4"  
Leg room 42.4"/36.9"/34.9"  
Shoulder room 59.0"/58.9"/53.1"  
Hip room 55.4"/55.5"/45.3"

**WEIGHTS AND CAPACITIES**

Cargo volume, 5-passenger (behind 1st/2nd row) 85.8/45.1 cu. ft.  
Cargo volume, 7-passenger (behind 1st/2nd/3rd row) 83.7/43.9/13.6 cu. ft.  
Axle ratio 3.55:1 standard; 3.73:1 optional (required and only available on 4.0L V-6 with Trailer Tow Upgrade Package)

**4.0L SOHC V-6**

Horsepower 210 @ 5100 rpm  
Torque 254 lb.-ft. @ 3700 rpm  
Compression ratio 9.7:1

**4.6L SOHC V-8**

Horsepower 292 @ 5750 rpm  
Torque 300 lb.-ft. @ 3950 rpm  
Compression ratio 9.7:1

**V-6 TOWING lbs.**

4x2 standard 3500  
AWD standard 3500  
4x2 optional 5295  
AWD optional 5000

**V-8 TOWING lbs.**

4x2 standard 3500  
AWD standard 3500  
4x2 optional 7220  
AWD optional 7055

**EXTERIOR PAINT COLORS**



WHITE SUEDE<sup>1</sup>



VAPOR SILVER<sup>1,2</sup>



STONE GREEN<sup>1</sup>



SILVER BIRCH



VIVID RED<sup>2</sup>



BLACK<sup>2</sup>



DARK CHERRY



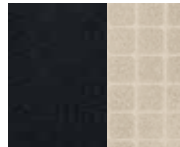
WHITE CHOCOLATE TRI-COAT<sup>3</sup>

Mercury uses clearcoat paint for beauty and protection. All exterior paints are Metallic except for White Suede and Black. Colors are representative only. <sup>1</sup>New for 2008. <sup>2</sup>Available on Chrome Package. <sup>3</sup>Available on Premier only.

**INTERIOR CLOTH/LEATHER COLORS**



CAMEL LEATHER/SAND ALCANTARA<sup>®</sup> INSERTS ■



CHARCOAL BLACK LEATHER/SAND ALCANTARA INSERTS ■



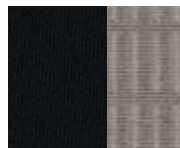
CAMEL LEATHER WITH PERFORATED INSERTS □ □



CHARCOAL BLACK LEATHER WITH PERFORATED INSERTS □ □



CAMEL CLOTH/SAND CLOTH INSERTS ■



CHARCOAL BLACK CLOTH/MEDIUM LIGHT STONE CLOTH INSERTS ■

■ MOUNTAINEER  
■ MOUNTAINEER PREMIER  
□ AVAILABLE

**WHEELS**



17" MACHINED-ALUMINUM STANDARD ON MOUNTAINEER



18" SATIN-ALUMINUM CHROME-CLAD STANDARD ON PREMIER



18" BRIGHT CHROME-CLAD AVAILABLE ON PREMIER WITH CHROME PACKAGE



20" POLISHED-ALUMINUM AVAILABLE ON PREMIER



Get the ride you want. Whether you plan to lease or finance, you'll find the choices that are right for you at Ford Credit. Ask your Lincoln Mercury Dealer for details or check us out at [www.fordcredit.com](http://www.fordcredit.com).

**Ford Motor Company Insurance Services** Get Ford Motor Company quality in your auto insurance. Our program offers industry-leading benefits and competitive rates. Call 1.877.367.3847, or visit us at [www.fordvip.com](http://www.fordvip.com) for a no-obligation quote. Insurance offered by American Road Services Company (in CA, American Road Insurance Agency), a licensed agency and subsidiary of Ford Motor Company.

**Ford Extended Service Plan** For a purchase or lease, the Ford Extended Service Plan (ESP) gives you "Peace-of-Mind" protection designed to cover key vehicle components and protect you from the cost of unexpected repairs. Ask your dealer for an ESP, the only service contract backed exclusively by Ford and honored at all Ford Lincoln Mercury dealerships.

Peace of mind comes from a 3-year/36,000-mile bumper-to-bumper **New Vehicle Limited Warranty** that covers repair, replacement or adjustment of parts at no additional cost, as well as a 5-year/60,000-mile powertrain limited warranty which features no deductible and is fully transferable. Roadside Assistance for 5 years or 60,000 miles provides the security of knowing that help may be only a phone call away should you run out of fuel, lock yourself out of the vehicle or need towing. Your Lincoln Mercury Dealer will provide complete details.

Comparisons based on 2007 competitive models (Truck-based midsize SUV class), publicly available information and Ford certification data at time of release. Some features discussed may be optional. Vehicles shown may contain optional equipment. Features shown may be offered only in combination with other options or subject to additional ordering requirements or limitations. Dimensions shown may vary due to optional features and/or production variability. Following publication of the catalog, certain changes in standard equipment, options and the like, or product delays may have occurred which would not be included in these pages. Your Lincoln Mercury Dealer is the best source for up-to-date information. Lincoln Mercury reserves the right to change product specifications at any time without incurring obligations.