



**Drive one.**

**09 TAURUS X**



Thank you for your interest in the 2009 Ford Taurus X. Included in this brochure you'll find information about:

**Power:** The 3.5L Duratec® V6 engine pumps out 263-horsepower.

**Handling:** AdvanceTrac® electronic stability control (ESC) automatically applies individual wheel brakes to aid steering.

**Technology:** Available class-exclusive Ford SYNC® voice-activated communications and entertainment system offers hands-free operation.\*

**Safety:** Chosen as an IIHS Top Safety Pick two years in a row.\*\*

\*Don't drive distracted. Even with SYNC, only use phones/devices when safe.

\*\*When equipped with optional electronic stability control.

## Dealer Information

Find up-to-date contact information for your local Ford dealer. To visit a local dealer Web site and view a map of their location, click on one of the links below.

<a href="#">Future Ford of Concord</a>	2285 Diamond Blvd. Concord, CA 94520	(925) 521-2121
<a href="#">Walnut Creek Ford</a>	1800 North Main Street Walnut Creek, CA 94596	(925) 932-2900
<a href="#">Diablo Ford</a>	2575 Railroad Avenue Pittsburg, CA 94565	(925) 432-9717
<a href="#">Albany Ford</a>	718 San Pablo Avenue Albany, CA 94706	(510) 528-1244

EXPERIENCED MY FORD YET? Get an inside look at the benefits of Ford ownership at the My Ford owner Web site. It's a one-stop spot for managing important vehicle information – 24/7, whenever you need it. It's free to register for personalized maintenance schedules, incentives and offers, and much more. You can even access your Ford Credit information and online bill payment services. Log on to [www.myford.fordvehicles.com](http://www.myford.fordvehicles.com) to get started.





Drive one.

09 TAURUS X



UP TO **24** mpg  
highway<sup>1</sup>

Taurus X Limited • Tuxedo Black Metallic

263-HP EXHILARATION  
**PLUS UP TO 24 MPG HWY.<sup>1</sup>**

For all you do, call on the versatile Taurus X crossover. Its 263-hp 3.5L Duratec V6 is managed with the refinement of a slick-shifting 6-speed automatic. Fill up the fuel tank and you can keep on keeping on for up to 420 miles.<sup>2</sup> Intake variable cam timing (iVCT) optimizes response. And All-Wheel Drive (AWD) is optional for superior control, plus ultimate non-stop performance: Wheel slippage is anticipated before it occurs. Be it in AWD or FWD form, Taurus X sports

a MacPherson-strut front suspension and multilink rear suspension — each fortified with a stabilizer bar, gas-pressurized shock absorbers and helical coil-over-shock springs — that work in tandem to hug corners and soothe rough spots. Smooth moves: Do it all with incredible efficiency.

<sup>1</sup>2009 EPA-estimated hwy. fuel economy with FWD. <sup>2</sup>FWD models.

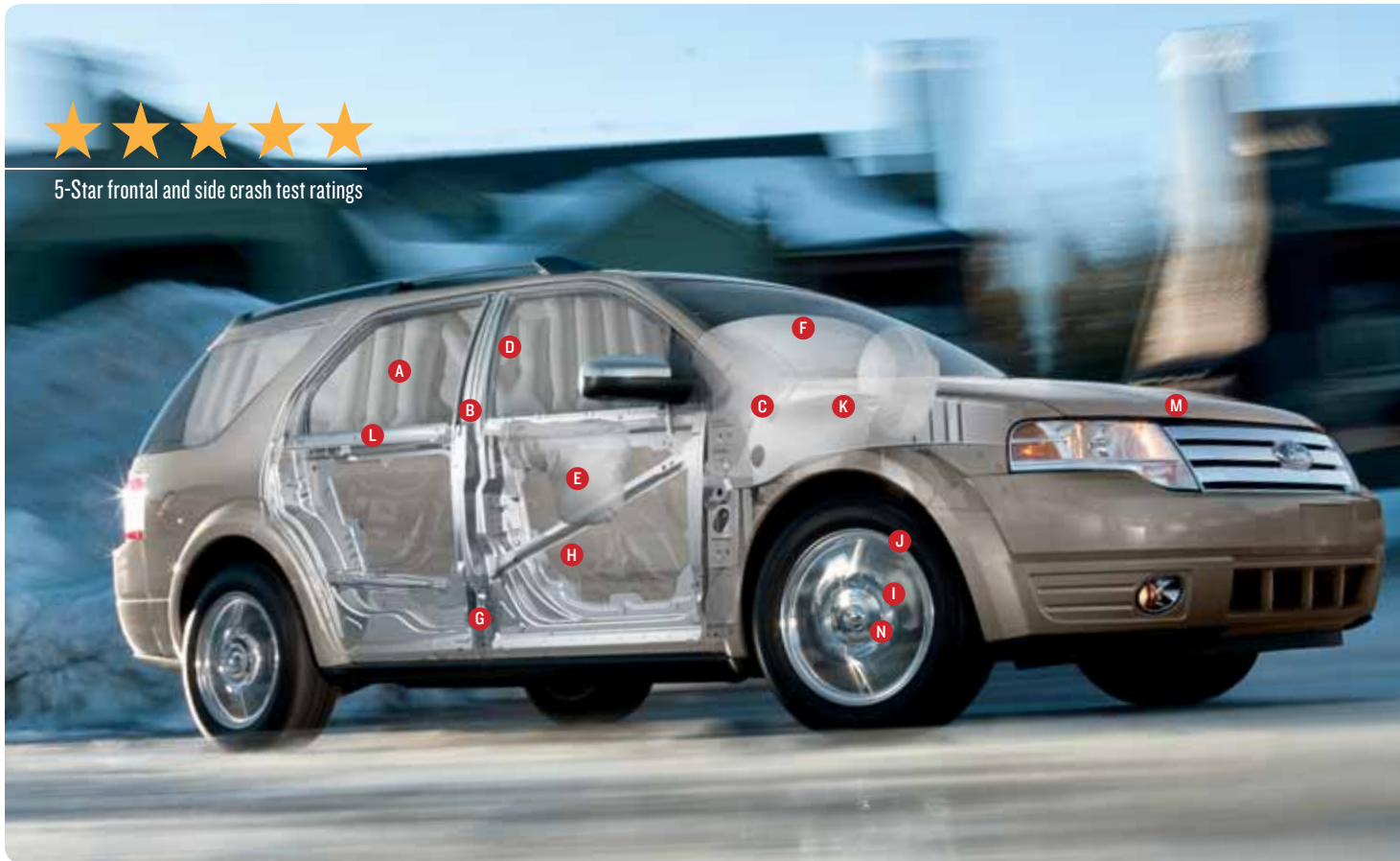


Drive one.

# 09 TAURUS X



5-Star frontal and side crash test ratings



- A** Side-curtain airbags — front to back — for outboard occupants; part of the Safety Canopy<sup>®</sup> System that also includes a rollover sensor
- B** SPACE (Side Protection And Cabin Enhancement) Architecture,<sup>™</sup> including pressure crash sensors in the doors
- C** Tripod design is key to the high-strength steel “ring of protection”
- D** Front-seat safety belt pretensioners
- E** Front-seat side airbags
- F** Dual-stage front airbags
- G** Laser-welded side pillars redirect crash forces underneath the seats
- H** Front-Passenger Sensing System
- I** 4-wheel disc Anti-lock Brake System (ABS) with Brake Assist and Traction Control
- J** Tire Pressure Monitoring System
- K** Front and rear crumple zones
- L** LATCH (lower anchors and tether anchors for child-safety seats)
- M** Anti-theft perimeter alarm
- N** AdvanceTrac electronic stability control

## RATED AMERICA'S SAFEST<sup>1</sup> 7-PASSENGER CROSSOVER

Taurus X protects — it rates the maximum 5 Stars across the board in all frontal and side crash tests conducted by the government's National Highway Traffic Safety Administration (NHTSA). It's also earned "Top Safety Pick" status from the Insurance Institute for Highway Safety (IIHS), which even performs a rear crash-protection test to determine whiplash prevention. To help keep you from straying off the intended path, AdvanceTrac<sup>®</sup> electronic

stability control<sup>2</sup> is always on guard. So are 6 airbags. Something new this year: Should an airbag deploy or a safety belt pretensioner activate, the SOS Post-Crash Alert System<sup>3</sup> automatically sounds the horn and flashes the hazards. When you hit the road, there's no better, or safer, place to be than in Taurus X.

<sup>1</sup>Based on both NHTSA 5-Star crash test ratings and 2008 IIHS "Top Safety Pick." Star ratings are part of the U.S. Department of Transportation's Safercar.gov program (www.safercar.gov). <sup>2</sup>Remember that even advanced technology cannot overcome the laws of physics. It's always possible to lose control of a vehicle due to inappropriate driver input for the conditions. <sup>3</sup>SOS hardware may become damaged or the battery may lose power in a crash, which could prevent operation. Not all crashes will activate an airbag or safety belt pretensioner.



Drive one.

09 TAURUS X



Taurus X Eddie Bauer (6-Passenger) • Two-Tone Camel and Sand Perforated-Leather Trim • Ford Licensed Accessory — Dual INVISION® DVD Headrests



## ACTIVATE YOUR LIFESTYLE

You're empowered with elevated, class-exclusive<sup>1</sup> Command Seating.<sup>TM</sup> In your choice of 6- or 7-passenger configurations, each boasting 3 spacious rows of flexibility. Eddie Bauer and Limited models come furnished with the luxury of perforated-leather trim, contrast stitching and heated front seats. Their pedals are power adjustable to the perfect height, and dual-

zone temperature settings are displayed to the exact degree. Fill your senses to the n<sup>th</sup> degree with the innovative, hands-free Ford SYNC<sup>®</sup> entertainment and communications system,<sup>2</sup> plus SIRIUS<sup>®</sup> Satellite Radio<sup>3</sup> — there are more than 130 channels of variety, and the music is 100% commercial-free. Turn it up.

<sup>1</sup>7-passenger Crossover Class. <sup>2</sup>Driving while distracted can result in loss of vehicle control. Only use mobile phones and other devices, even with voice commands, when it is safe to do so. Microsoft is a registered trademark of Microsoft Corporation. The Bluetooth word mark is a registered trademark owned by the Bluetooth SIG, Inc. <sup>3</sup>Service not available in Alaska or Hawaii. See your Ford Dealer or contact SIRIUS at 1-888-539-7474 for details. "SIRIUS," the SIRIUS dog logo and "The Best Radio on Radio" are registered trademarks of SIRIUS Satellite Radio Inc.



Drive one.

## 09 TAURUS X



A



B



C



D



F

### MULTITALENTED

- A. Catering to the pleasure of guests in back, the DVD Family Entertainment System is optional for fun and games. It features a flip-down 8" LCD screen, 2 infrared wireless headphone sets and a remote control.
- B. The one-touch, power-up/-down liftgate is the ultimate convenience option.
- C. When you're slowly backing up, the available Reverse Sensing System detects objects up to 6' behind Taurus X — beeping more rapidly the closer you get.
- D. With the power moonroof option, bring the outside in — anytime, day or night. Open it up all the way, just a little, or simply tilt it for a breath of fresh air. A manual, sliding privacy shade is built in.
- E. Class-exclusive Ford SYNC<sup>®</sup> is the award-winning standard for communications and entertainment.<sup>1</sup> This voice-activated, customizable media system integrates your Taurus X with most Bluetooth<sup>®</sup>-enabled mobile phones and portable digital media players. It's standard on Eddie Bauer and Limited; optional on SEL. Visit [SyncMyRide.com](http://SyncMyRide.com) for the latest information about exciting new features. *You talk. SYNC listens.<sup>™</sup>*
- F. The voice-activated Navigation System eliminates travel guesswork. A 6.5" color touch screen clearly displays maps and menus, pinpointing where you are and providing turn-by-turn, spoken-aloud Route Guidance. More than 20 different functions — many of which can simply be voice prompted — are accessible on this option.

<sup>1</sup>Driving while distracted can result in loss of vehicle control. Only use mobile phones and other devices, even with voice commands, when it is safe to do so. Microsoft is a registered trademark of Microsoft Corporation. The Bluetooth word mark is a registered trademark owned by the Bluetooth SIG, Inc.



**Drive one.**

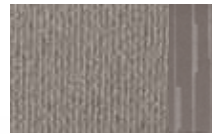
# 09 TAURUS X

## COLORIZE YOUR TAURUS X

### Exterior and Interior Selections

Camel		Medium Light Stone		Charcoal Black	
<b>SEL</b>					
●	●				
●	●				
●	●				
●	●				
●	●				
●	●				
●	●				
●	●				
●	●				
<b>EDDIE BAUER<sup>2</sup></b>					
●	●				
●	●				
●	●				
●	●				
●	●				
<b>LIMITED</b>					
●	●	●			
●	●	●			
●	●	●			
●	●	●			
●	●	●			
●	●	●			
●	●	●			
●	●	●			

<sup>1</sup>New for 2009.  
<sup>2</sup>Eddie Bauer seats are two-tone with Camel bolsters and Sand inserts.



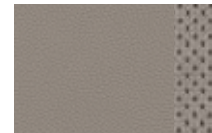
**Medium Light Stone Cloth**  
Standard on SEL



**Camel Cloth**  
Standard on SEL



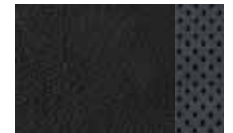
**Camel Leather with Sand Leather Inserts**  
Standard on Eddie Bauer



**Medium Light Stone Leather**  
Standard on Limited;  
Available on SEL



**Camel Leather**  
Standard on Limited;  
Available on SEL



**Charcoal Black Leather**  
Standard on Limited



**Sangria Red Metallic**



**Tuxedo Black Metallic**



**Light Ice Blue Metallic**



**White Sand Tri-Coat Metallic**



**Brilliant Silver Metallic**



**Cinnamon Metallic**



**Smokestone Metallic**



**White Suede**



**Dark Ink Blue Metallic**

Ford uses clearcoat paint for beauty and protection. Colors shown are representative only. Not all colors are available on all models. See your dealer for actual paint/trim options. Vehicles shown may contain optional equipment.



# Drive one.

# 09 TAURUS X

## Dimensions and Ratings

### EXTERIOR

Overall length	200.3"
Wheelbase	112.9"
Width (excluding mirrors/including mirrors)	74.9"/85.3"
Height	67.6"

### INTERIOR

1st row	
Head room	39.4"
Shoulder room	58.5"
Hip room	55.5"
Leg room	40.8"
2nd row	
Head room	39.7"
Shoulder room	58.0"
Hip room	56.0"
Leg room	40.4"
3rd row	
Head room	38.6"
Shoulder room	50.8"
Hip room	45.9"
Leg room	33.4"

### CAPACITIES

Seating	6 or 7
Passenger volume (cu. ft.)	146.2
Cargo volume (cu. ft.)	
Behind 1st row	85.5
Behind 2nd row	47.0
Behind 3rd row <sup>1</sup>	20.8
Fuel capacity (gal.)	19.0

### HORSEPOWER AND TORQUE

3.5L 24-valve Duratec V6 engine	hp/torque (lb.-ft.)
	263 @ 6250 rpm/ 249 @ 4500 rpm

### 2009 EPA-ESTIMATED FUEL ECONOMY

FWD	mpg city/hwy.
	17/24
AWD	15/22

## Standard Features

### MECHANICAL

- 3.5L Duratec V6 engine
- 6-speed automatic transmission
- 4-wheel disc Anti-lock Brake System (ABS)
- Brake Assist
- Compact spare tire
- Front-wheel drive (FWD)
- Hydraulic power steering
- Traction Control

### SAFETY AND SECURITY

- Personal Safety System<sup>®</sup> for driver and front passenger – Includes dual-stage front airbags<sup>2</sup>, safety belt pretensioners, safety belt energy-management retractors, safety belt usage sensors, driver-seat position sensor, crash severity sensor, restraint control module and Front-Passenger Sensing System
- AdvanceTrac<sup>®</sup> electronic stability control
- Battery saver
- Belt-Minder<sup>®</sup> front safety belt reminder
- Child-safety rear door locks
- Front-seat side airbags<sup>2</sup>
- Illuminated entry
- Integrated keyhead transmitter remotes (2)
- LATCH – Lower anchors and tether anchors for child-safety seats
- Safety Canopy<sup>®</sup> System with side-curtain airbags<sup>2</sup> and rollover sensor
- SecuriCode<sup>™</sup> keyless-entry keypad
- SecuriLock<sup>®</sup> passive anti-theft ignition system
- SOS Post-Crash Alert System
- SPACE (Side Protection And Cabin Enhancement) Architecture<sup>™</sup>
- Tire Pressure Monitoring System (excludes spare)

<sup>1</sup>Including rear seat well. <sup>2</sup>Always wear your safety belt and secure children in the rear seat.

### SEATING

- Command Seating<sup>™</sup>
- 1st-row bucket seats with 6-way power driver seat and manual lumbar adjustment, plus fold-flat front-passenger seat
- 2nd-row 40/40 split reclining bucket seats
- 3rd-row 50/50 split fold-in-floor bench seat

### INTERIOR

- 1st- and 2nd-row carpeted floor mats
- 2nd- and 3rd-row reading lights
- Accessory delay
- Auto-dimming rearview mirror
- Auxiliary audio input jack
- Front center floor console with armrest, beverage holders and storage
- Front overhead console with dome light, map light and sunglasses holder
- Leather-wrapped steering wheel
- Message center with compass
- Power door locks and windows with one-touch-up/-down driver-window feature
- Power points (4)
- Sliding sun visors with illuminated vanity mirrors
- Steering wheel-mounted cruise and secondary audio controls
- Tilt steering wheel

### EXTERIOR

- 3-bar bright chrome grille
- Dual chrome exhaust tips
- Fog lamps
- Rear-window defroster
- Roof rails
- Solar-tinted glass

## Wheels



17" 8-Spoke Bright-Finish Aluminum  
Standard on SEL



18" 5-Spoke Bright-Finish Aluminum  
Standard on Eddie Bauer and Limited



18" 7-Spoke Chrome-Clad Aluminum  
Optional on SEL, Eddie Bauer and Limited





**Drive one.**

# 09 TAURUS X

## PERSONALIZE YOUR TAURUS X IN 4 STEPS

**1**

### Choose your model

#### Taurus X Powertrain

Make things happen with on-demand acceleration. The die-cast, aluminum-block V6 engine produces a robust 263 hp and 249 lb.-ft. of torque; employs dual overhead cams (DOHC) and intake variable cam timing (iVCT) for optimal output per liter; attains peak performance on regular unleaded gasoline; and is teamed with a 6-speed automatic that delivers ultra-smooth, precision shifts and contributes to the impressive 24-mpg-highway efficiency for front-wheel-drive models.

#### 3.5L Duratec DOHC 24-valve V6 engine

- 6-speed automatic transmission
- 263 hp

UP TO  
**24**mpg  
highway<sup>1</sup>

#### Taurus X SEL Equipped with all the standard features on previous page, plus:

- 17" 8-spoke bright-finish aluminum wheels with P215/65R17 tires
- Anti-theft perimeter alarm
- 2nd-row cloth 40/40 split reclining bucket seats
- 3rd-row cloth 50/50 split fold-in-floor bench seat
- Air conditioning
- AM/FM stereo/single-CD player with clock
- Body-color, power, heated sideview mirrors with security approach lamps
- Privacy glass on 2nd-row, 3rd-row and liftgate windows
- Body-color door handles
- Silver Eclipse cladding

#### Taurus X Eddie Bauer Includes all the standard SEL features, plus:

- 18" 5-spoke bright-finish aluminum wheels with P225/60R18 tires
- 1st- and 2nd-row perforated leather-trimmed seats
- 8-way power driver seat with power recline
- 4-way power front-passenger seat
- 3rd-row vinyl 50/50 split fold-in-floor bench seat
- Heated front seats
- Dual-zone Electronic Automatic Temperature Control
- Woodgrain appliqué
- AM/FM stereo/6-disc in-dash CD changer with MP3 capability and 4 speakers
- Ford SYNC® voice-activated, in-vehicle communications and entertainment system
- SIRIUS® Satellite Radio with 6-month subscription
- Power-adjustable pedals
- Automatic headlamps with on/off delay and wiper-activated headlamps feature
- Pueblo Gold cladding

#### Taurus X Limited Includes all the standard Eddie Bauer features, plus:

- 8-way power driver seat with memory
- Premium Sound System with AM/FM stereo/6-disc in-dash CD changer, MP3 capability, 8 speakers and subwoofer
- Power-adjustable pedals with memory
- Cyber Carbon appliqué with Charcoal Black interior; woodgrain with Camel and Medium Light Stone interiors
- Universal Garage Door Opener
- Chrome-accented door handles
- Chrome-accented, power, heated sideview mirrors with memory and security approach lamps
- Reverse Sensing System
- Body-color cladding

Continue your build on the next page.



Taurus X SEL



Taurus X Eddie Bauer



Taurus X Limited

<sup>1</sup>2009 EPA-estimated hwy. fuel economy with FWD.



**Drive one.**

# 09 TAURUS X

## 2 Choose your options

### Taurus X SEL

- All-Wheel Drive (AWD)
- 18" 7-spoke chrome-clad aluminum wheels with P225/60R18 tires
- 1st- and 2nd-row perforated leather-trimmed bucket seats with 3rd-row vinyl bench seat (6-passenger only)
- 2nd-row 60/40 split bench seat for 7-passenger seating available in cloth or leather trim
- Auxiliary climate controls (requires SEL Interior Convenience Package)
- DVD Family Entertainment System with 2 sets of wireless headphones and remote control (requires SEL Interior Convenience Package and auxiliary climate controls)
- Ford SYNC® voice-activated, in-vehicle communications and entertainment system
- Heated front seats (requires leather-trimmed seats, SEL Interior Convenience Package and SEL Interior Power Package)
- Power liftgate
- Power moonroof
- Reverse Sensing System
- SIRIUS Satellite Radio

### Taurus X Eddie Bauer

- All-Wheel Drive (AWD)
- 18" 7-spoke chrome-clad aluminum wheels with P225/60R18 tires
- 2nd-row center floor console (6-passenger only)
- 2nd-row leather-trimmed 60/40 split bench seat for 7-passenger seating
- Auxiliary climate controls
- DVD Family Entertainment System with 2 sets of wireless headphones and remote control (requires auxiliary climate controls)
- Power liftgate
- Power moonroof
- Reverse Sensing System
- Voice-activated Navigation System

### Taurus X Limited

- All-Wheel Drive (AWD)
- 18" 7-spoke chrome-clad aluminum wheels with P225/60R18 tires
- 2nd-row heated, auto-fold seats (6-passenger only; requires power liftgate)
- 2nd-row leather-trimmed 60/40 split bench seat for 7-passenger seating
- Auxiliary climate controls
- DVD Family Entertainment System with 2 sets of wireless headphones and remote control (requires auxiliary climate controls)
- Power liftgate
- Power moonroof
- Voice-activated Navigation System

## 3 Choose your package

### SEL Interior Convenience Package

Includes AM/FM stereo/6-disc in-dash CD changer with MP3 capability, Dual-zone Electronic Automatic Temperature Control, automatic headlamps with wiper-activated headlamps feature, outside temperature display, and Cyber Carbon trim appliques on instrument panel and center stack (Available on SEL)

### SEL Interior Power Package

Includes 8-way power driver seat, 4-way power front-passenger seat and power-adjustable pedals (Available on SEL)

### Limited Wood Package

Includes genuine wood insert on steering wheel and woodgrain appearance on shift knob; plus woodgrain appliqué on center stack for Charcoal Black interior (Available on Limited)



Optional Limited Wood Package

Comparisons based on 2008 competitive models (7-passenger Crossover class), publicly available information and Ford certification data at time of release. Some features discussed may be optional. Vehicles shown may contain optional equipment. Features shown may be offered only in combination with other options or subject to additional ordering requirements or limitations. Dimensions shown may vary due to optional features and/or production variability. Following release of this PDF, certain changes in standard equipment, options and the like, or product delays may have occurred which would not be included in these pages. Your Ford Dealer is the best source for up-to-date information. Ford Division reserves the right to change product specifications at any time without incurring obligations.

*Continue your build on the next page.*



Drive one.

09 TAURUS X

# 4 Customize your Taurus X

- A. Remote start systems
  - B. Premium carpeted floor mats
  - C. Side window deflectors
  - D. Moonroof deflector
  - E. Bug deflector
  - F. Garmin® nüvi® Portable Navigation System<sup>1</sup>
  - G. Cargo-Logic® System
  - H. Center console
  - I. Wheel locks
  - J. All-weather floor mats
  - K. Dual INVISION® DVD Headrests<sup>1</sup>
- Also available:*
- Electrochromic mirrors
  - Interior lighting kit
  - Splash guards
  - Vehicle security system
  - Ashcup/coin holder/Smoker's Pack
  - Thule® accessories<sup>1</sup>
  - Skyway SmartAlert™<sup>1</sup>
  - HD Radio®<sup>1</sup>
  - Wiper Shaker<sup>1</sup>
  - Ford SYNC®

<sup>1</sup>Ford Licensed Accessories.  
 Garmin is a registered trademark of Garmin Ltd.

Visit [fordaccessories.com](http://fordaccessories.com) to use the Accessorizer, learn complete accessory details and view purchase instructions.



Genuine Ford Accessories will be warranted for whichever provides you the greatest benefit: 12 months or 12,000 miles (whichever occurs first), or the remainder of your Bumper-to-Bumper 3-year/36,000-mile New Vehicle Limited Warranty. Contact your local Ford Dealer for details and a copy of the limited warranty. Ford Licensed Accessories (FLA) are warranted by the accessory manufacturer's warranty. Contact your Ford Dealer for details regarding the manufacturer's limited warranty and/or a copy of the FLA product limited warranty offered by the accessory manufacturer.





Drive one.

# 09 TAURUS X



### Drive quality.

Taurus X swept the midsize crossover class in the 2008 SmartChoice Lowest Maintenance Costs awards presented by *IntelliChoice.com*.



### Drive green.

Taurus X achieves up to 24 mpg highway.<sup>1</sup> And its Chicago Manufacturing Campus includes an entire 6.5 acres of restored wetlands.



### Drive safe.

Taurus X is rated America's safest<sup>2</sup> 7-passenger crossover — with 5-Star status in all NHTSA crash tests, and as an IIHS "Top Safety Pick."



### Drive smart.

Standard: SPACE (Side Protection And Cabin Enhancement) Architecture.<sup>TM</sup>  
Optional: Voice-activated navigation and Ford SYNC.<sup>®3</sup>



<sup>1</sup>2009 EPA-estimated hwy. fuel economy with FWD. <sup>2</sup>Based on both NHTSA 5-Star crash test ratings and 2008 IIHS "Top Safety Pick." Star ratings are part of the U.S. Department of Transportation's Safercar.gov program ([www.safercar.gov](http://www.safercar.gov)). <sup>3</sup>Driving while distracted can result in loss of vehicle control. Only use mobile phones and other devices, even with voice commands, when it is safe to do so.

**New Vehicle Limited Warranty.** We want your Ford Taurus X ownership experience to be the best it can be. So under this warranty, your new vehicle comes with 3-year/36,000-mile Bumper-to-Bumper Coverage, 5-year/60,000-mile Powertrain Warranty Coverage, 5-year/50,000-mile Safety Restraint Coverage, and 5-year/unlimited-mile Corrosion (Perforation) Coverage – all with no deductible. Please ask your Ford Dealer for a copy of this limited warranty.

**Roadside Assistance.** Covers your vehicle for 5 years or 60,000 miles, so you have the security of knowing that help may be only a phone call away should you run out of fuel, lock yourself out of the car, or need towing. Your Ford Dealer can provide complete details on all of these advantages.

**Ford Credit.** Get the ride you want. Whether you plan to lease or finance, you'll find the choices that are right for you at Ford Credit. Ask your Ford Dealer for details or check us out at [fordcredit.com](http://fordcredit.com).

**Extended Service Plan.** For a purchase or lease, the Ford Extended Service Plan (ESP) gives you "Peace-of-Mind" protection designed to cover key vehicle components and protect you from the cost of unexpected repairs. Ask your dealer for a Ford ESP, the only service contract backed exclusively by Ford and honored at all Ford Lincoln Mercury dealerships.

**Insurance Services.** Get Ford Motor Company quality in your auto insurance. Our program offers industry-leading benefits and competitive rates. Call 1-877-367-3847, or visit us at [fordvip.com](http://fordvip.com) for a no-obligation quote. Insurance offered by American Road Services Company (in CA, American Road Insurance Agency), a licensed agency and subsidiary of Ford Motor Company.



© 2008 Ford Motor Company

09TRXWEBPDF

[fordvehicles.com](http://fordvehicles.com)