

MUSTANG



2010



MUSTANG  2010

WHEN WAS THE FIRST TIME?

You pressed your face to the glass and exclaimed that 4-letter word, "COOL."



MUSTANG 
2010

You hear the growl, rumbling ever closer like a brewing storm.
Suddenly, the new Mustang bolts into view.

Your soul enticed. Your heart stolen.

On the street or at the track, under sun's light or dusk's veil...

... it can happen anywhere.

Anytime.



MUSTANG  2010



SHELBY GT500[®]

■ 540 hp, 510 lb.-ft. torque, 3.55 gear ratio ■ Driving dynamics optimized by SVT ■ Intercooled 5.4L V8 with a supercharged boost ■ Shelby thunder piped out back ■ Twin-disc clutch ■ Goodyear[®] F1 Supercar 19" tires (coupe) ■ Wheels milled, both sides ■ Heat extractor on aluminum hood ■ Unique splitter and Gurney Flap spoiler ■ All-new inside: 3D aluminum panels, racing-stripe shifter, plus Alcantara[®] leather trim on seats and steering wheel ■ Exclusive red, white and blue MyColor[®] array for gauges



GT500 is a registered trademark of Carroll Hall Shelby Trust.
Alcantara is a registered trademark of Alcantara S.p.A., Italy.

fordvehicles.com

MUSTANG  2010

540

SUPERCHARGED OUTPUT. SHELBY INPUT.



ACCELERATION THAT'S **EXPLOSIVE**

Hall-of-fame racing legend Carroll Shelby didn't invent the Mustang — *he ignited it*. In 1964, he applied his Ford AC Cobra learnings to the first Ford Mustang. End result? A performance-packed pony: the 1965 Shelby GT350. Carroll Shelby still thinks a Mustang is meant to go faster. So he teamed with Ford's Special Vehicle Team (SVT) to deliver the most powerful GT500® ever.

GT500 is a registered trademark of Carroll Hall Shelby Trust.

fordvehicles.com

MUSTANG  2010



PHENOMENAL LEAPS TO MIND

This cockpit is an all-new blend of world-class craftsmanship, premium materials and the latest technology. A seamless, soft-touch skin wraps the one-piece instrument panel. The floor console now runs in a smooth, flat arc for consummate shifting, while the shifter itself is a perfect fit for the palm of your hand. Controls glow Ice Blue.™ For added intensity, genuine aluminum panels are optional. Voice-activated Ford SYNC® is available. The center stack is revamped. And restyled, bolstered seating is expertly detailed, right down to the stitching. *Hop in.*



MUSTANG  2010

MUSTANG GT

■ GT and GT Premium models available ■ Proven – and improved – 315-hp 4.6L SOHC 3-valve V8 under hood ■ POWERED BY FORD engine cover ■ New body with unique front end cheats the wind: both a lower drag coefficient and reduced aerodynamic lift ■ HID headlamps optional ■ Fog lamps housed in grille, on either side of exclusive-to-GT dark chrome Pony ■ All-new wide-spoke 18" wheels standard ■ Larger, bright rolled 3.5" tips on dual exhaust ■ Available ball-shaped manual shifter made of polished aluminum



DONUTS WERE NEVER **SWEETER**

Drop the clutch and do it up. With the addition of cold-air induction to the recalibrated V8, output jumps to 315 and the redline bumps to 6000. There's a throatier roar to match – wider dual-exhaust tips shout it out. For extra emphasis, that signature V8 rumble is specially piped directly into the cabin. Suspension components – including springs, stabilizer bars, struts, shocks, control arms, brakes and steering – are fine-tuned for a more engaging and balanced GT experience. And while stability control comes standard, you can switch it to sport mode or shut it down completely. The all-new TrackPack¹ is the ultimate option: Developed *for* enthusiasts *by* enthusiasts, you're treated to SVT stabilizer bars and lower control arms, a front shock-tower crossbrace, performance brake pads, a 3.73 rear-axle ratio, 19" summer treads and lots more. Have at it.

¹Available Summer 2009.

fordvehicles.com



Closed course.
Professional driver. Do not attempt.

MUSTANG V6

- V6 and V6 Premium models available ■ 210 hp with plenty of low-end torque ■ Rear stabilizer bar for improved handling ■ AdvanceTrac[®] electronic stability control¹
- 4-wheel disc ABS and All-Speed Traction Control ■ Ambient Lighting in 7 hues available for sill plates, footwells, cupholders and door pockets ■ Antenna relocated to rear
- V6 Pony Package option is loaded: a bright Pony flanked by satin chrome on the grille, fog lamps in the lower fascia, 18" polished wheels, stripes, rear spoiler and more



SEDUCES FROM EVERY ANGLE

The sweeping beltline, kicked-up haunches, pronounced curves, chiseled arches, power dome hood, and even the hidden washer-fluid jets make for a cleaner, leaner machine. On top of some striking new rims – now wrapped in 17" or optional 18" rubber – Mustang V6 sports a unique grille and front fascia for a sleek look all its own. *Notice* is served, with heaps of fun.



¹Remember that even advanced technology cannot overcome the laws of physics. It's always possible to lose control of a vehicle due to inappropriate driver input for the conditions.

MUSTANG CONVERTIBLE

- A true convertible designed and engineered from the ground up, maximizing structural rigidity
- Low-profile, power top Z-folds out of sight and has 3 layers: weatherproofed outside, tailored inside, sound-deadened in between
- Top exterior is composed of vinyl or cloth (GT500® and GT Premium models)
- Top available in a new shade – Stone



UNABASHED & UNINHIBITED

Power in its purest form. Total freedom, with unlimited head room. A wind-in-hair rush, revealing your take-a-ride-on-the-wild side. Sights, sounds, smells: simply spectacular. It's a whole new world. Where you're always center stage.

GLASS ROOF MUSTANG

- Optional on V6 Premium and GT Premium models
- Tinted, high-performance safety glass helps keep the cabin cool and deflects ultraviolet radiation – defending the integrity of interior trim and fabric
- Includes a manual, retractable, built-in shade
- A transparent acoustic layer helps reduce noise, vibration and harshness



EUPHORIA – 24/7/365

It's awesome. The available, see-through glass roof presents a lush panorama of constantly changing skies and cityscapes. Wherever, whatever the weather. Enjoy the show.



MUSTANG GARAGE

Pimp it. Mod it. Customize it. Mustang Garage is the happenin' place: where you're offered tons of add-ons – from the factory, from Custom Accessories, and from Ford Racing. Make America's original pony car as original as you.

Also available:

- Pony Grille
- Lower Rear Fascia (Diffuser style)
- Spoilers
- Front End Covers
- Full Vehicle Covers
- Convertible Hard Tonneau Cover¹
- Hood Deflector
- Side Window Deflectors
- Wheels
- Wheel Locks
- Keyless Entry Keypad
- Remote Start Systems
- Vehicle Security System
- Electrochromic Mirrors
- Blaupunkt® Subwoofer¹
- Garmin® nüvi® Portable Navigation System¹
- Wiper Shaker¹
- Interior Lighting Kit
- Illuminated Sill Plates
- Ashcup/Coin Holder/Smoker's Pack
- Cargo Net
- Cargo Area Protector
- Cargo Organizer
- Soft Cargo Organizer
- Soft Cargo Cooler
- Premium Carpeted Floor Mats
- All-Weather Floor Mats



Quarter Window Louvers



Side Scoops



Decklid Fascia Panel



Decklid Pedestal Spoiler



Hood Scoop



Hood & Side Stripes



Over-the-Top Racing Stripes



Short-Throw Shifter for V6 and GT



Handling Packs for V6, GT and GT500



Super Packs for GT and GT500



Power Upgrade Package for V6 and GT



Shaker Hood Scoop for GT

Garmin is a registered trademark of Garmin Ltd.

To learn more about Ford Accessories or to buy them online, visit fordaccessories.com. Visit fordracingparts.com and phone 1-800-FORD-788 for all racing package content and specifications.

Genuine Ford Accessories will be warranted for whichever provides you the greatest benefit: 12 months or 12,000 miles (whichever occurs first), or the remainder of your Bumper-to-Bumper 3-year/36,000-mile New Vehicle Limited Warranty. Contact your local Ford Dealer for details and a copy of the limited warranty. Ford Licensed Accessories (FLA) are warranted by the accessory manufacturer's warranty. Contact your Ford Dealer for details regarding the manufacturer's limited warranty and/or a copy of the FLA product limited warranty offered by the accessory manufacturer.

¹Ford Licensed Accessories.



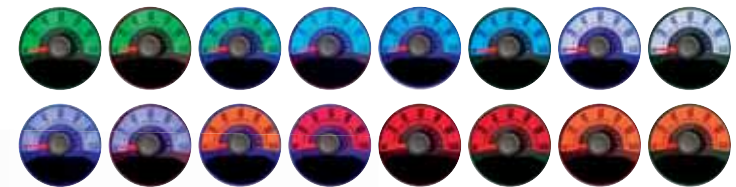
MUSTANG TECH



NAVIGATION SYSTEM AND SIRIUS TRAVEL LINK™ feature voice activation. This GPS-linked option offers Route Guidance – reading upcoming street names aloud, detecting traffic incidents, and offering alternatives. Upon request, Travel Link provides lowest fuel prices, real-time traffic, weather, sports info and movie listings.¹ You've also got nearly 10 gigs of storage space available, meaning you can manage your music with the Jukebox, rip up to 2400 songs, and even load pics to your home page. All good.



REAR VIEW CAMERA is an optional hi-tech helper. A full-color image of what's in back is projected in front of you – on the rearview mirror or available Navigation screen. An overlaid grid adds a directional assist.



MYCOLOR® is available to make your Mustang experience even livelier: Turn the key and you're greeted by a sweeping motion of the cluster needles, as well as staged halo lighting. Then you can select from 125 color combos for the full complement of gauges. Quite the eye-ful.



FORD SYNC – developed with Microsoft® – is a voice-activated, customizable media system that integrates your Mustang with most Bluetooth®-enabled phones and digital media players. Plug your player into the USB port and press a button on the steering wheel: tunes are at your command. For cellular use, enter the car with a compatible and paired Bluetooth-enabled phone: SYNC knows you've arrived.² This available system also provides direct-connect 911 Assist,³ and you can request a Vehicle Health Report as you see fit. Check out SyncMyRide.com for details. *You talk. SYNC listens.™*

¹Real-time traffic monitoring available in select markets. Some features are unavailable while driving. Service not available in Alaska or Hawaii. See your Ford Dealer for details. "SIRIUS," the SIRIUS dog logo and related marks are trademarks of SIRIUS Satellite Radio Inc. Not available in AK or HI. ²Driving while distracted can result in loss of vehicle control. Only use mobile phones and other devices, even with voice commands, when it is safe to do so. Microsoft is a registered trademark of Microsoft Corporation. The Bluetooth word mark is a trademark of the Bluetooth SIG, Inc. ³The vehicle's electrical system (including the battery), the wireless service provider's signal, and a connected mobile phone must all be available and operating for 911 Assist to function properly. These systems may become damaged in a crash. The paired mobile phone must be turned on, connected to SYNC, and the 911 Assist feature enabled in order for 911 to be dialed.

Specs



DIMENSIONS & CAPACITIES

Exterior	Coupe/Convertible
Wheelbase	107.1"
Length	188.1"
Height	55.6"/56.1"
Width – Excluding mirrors	73.9"
Width – Including mirrors	80.1"

Interior – Front	
Head room	38.5"/38.8"
Shoulder room	55.3"
Hip room	53.4"
Leg room	42.4"

Interior – Rear	
Head room	34.7"/36.5"
Shoulder room	51.6"/45.0"
Hip room	46.8"/45.2"
Leg room	29.8"

Capacities	
Passenger volume (cu. ft.)	83.3/81.0
Luggage capacity (cu. ft.)	13.4/9.6
Total interior volume (cu. ft.)	96.7/90.6
Fuel capacity (gal.)	16.0

2010 EPA-ESTIMATED FUEL ECONOMY

4.0L SOHC V6 engine	
Manual transmission	18 mpg city/26 hwy.
Automatic transmission	16 mpg city/24 hwy.

4.6L SOHC V8 engine	
Manual transmission	16 mpg city/24 hwy.
Automatic transmission	17 mpg city/23 hwy.

5.4L DOHC V8 engine	
Manual transmission	14 mpg city/22 hwy.

STANDARD

Mechanical

All-Speed Traction Control
Coil-over-strut front suspension
Coil spring 3-link solid-axle rear suspension
Compact spare tire
Power rack-and-pinion steering
Power, vented 4-wheel disc brakes with Anti-lock Brake System (ABS)

Safety & Security

Personal Safety System™ with dual-stage front airbags ¹
AdvanceTrac® electronic stability control
Belt-Minder® front safety belt reminder
Front-seat side airbags ¹
Illuminated entry
LATCH – Lower anchors and tether anchors for child-safety seats
Safety belt restraint system – Manual 3-point shoulder and lap safety belt system for all seating positions
SecuriLock® passive anti-theft ignition system
Side-intrusion door beams
SOS Post-Crash Alert System™ ²
Tire Pressure Monitoring System (excludes spare)

Seating

4-way manual height-adjustable driver seat
50/50 split-folding rear seat (coupe only)

Interior

4-gauge instrument cluster with chrome accents
Air conditioning
Premium AM/FM stereo/single-CD audio system
Auxiliary audio input jack
Carpeted front floor mats in Charcoal Black
Cruise control
Cupholders (2)
Full center floor console with armrest and locking storage
Ice Blue™ lighting
Interior trunk release
Power door locks and windows with one touch-up/down feature
Tilt steering wheel

Exterior

Complex-reflector halogen headlamps
Easy Fuel™ capless fuel-filler system
Light-Emitting Diode (LED) taillamps – Sequential
Rear-window defroster
Remote keyless-entry system with integrated keyhead transmitter remotes (2)
Rocker moldings – Black
Variable-interval windshield wipers
Vinyl top (convertible only)

New Vehicle Limited Warranty. We want your Ford Mustang ownership experience to be the best it can be. So under this warranty, your new vehicle comes with 3-year/36,000-mile Bumper-to-Bumper Coverage, 5-year/60,000-mile Powertrain Warranty Coverage, 5-year/50,000-mile Safety Restraint Coverage, and 5-year/unlimited-mile Corrosion (Perforation) Coverage – all with no deductible. Please ask your Ford Dealer a copy of this limited warranty.

Roadside Assistance. Covers your vehicle for 5 years or 60,000 miles, so you have the security of knowing that help may be only a phone call away should you run out of fuel, lock yourself out of the vehicle, or need towing. Your Ford Dealer can provide complete details on all of these advantages.

Ford Credit. Get the ride you want. Whether you plan to lease or finance, you'll find the choices that are right for you at Ford Credit. Ask your Ford Dealer for details or check us out at fordcredit.com.

Ford Extended Service Plan. For a purchase or lease, the Ford Extended Service Plan (ESP) gives you "Peace-of-Mind" protection designed to cover key vehicle components and protect you from the cost of unexpected repairs. Ask your dealer for a Ford ESP, the only service contract backed exclusively by Ford and honored at all Ford Lincoln Mercury dealerships.

Insurance Services. Get Ford Motor Company quality in your auto insurance. Our program offers industry-leading benefits and competitive rates. Call 1-877-367-3847, or visit us at fordvip.com for a no-obligation quote. Insurance offered by American Road Services Company (in CA, American Road Insurance Agency), a licensed agency and subsidiary of Ford Motor Company.

Comparisons based on 2009 competitive models (Sports Car class), publicly available information and Ford certification data at time of release. Some features discussed may be optional. Vehicles shown may contain optional equipment. Features shown may be offered only in combination with other options or subject to additional ordering requirements or limitations. Dimensions shown may vary due to optional features and/or production variability. Following release of the PDF, certain changes in standard equipment, options and the like, or product delays may have occurred which would not be included in these pages. Your Ford Dealer is the best source for up-to-date information. Ford Division reserves the right to change product specifications at any time without incurring obligations.

¹Always wear your safety belt and secure children in the rear seat. ²SOS hardware may become damaged or the battery may lose power in a crash, which could prevent operation. Not all crashes will activate an airbag or safety belt pretensioner.



V6

Equipped with all standard features, plus:

Rapid Spec 100A

4.0L SOHC V6 engine with 210 hp @ 5300 rpm and 240 lb.-ft. of torque @ 3500 rpm

5-speed manual transmission

17" painted-aluminum wheels

Front and rear stabilizer bars

Stainless steel single exhaust

Black power sideview mirrors

Available Packages

Exterior Sport Appearance Package – Rapid Spec 101A

Security Package

Available Option

5-speed automatic transmission

V6 PREMIUM

Equipped with all standard V6 features, plus:

Rapid Spec 200A

Ford SYNC® voice-activated communications and entertainment system¹

17" machined-aluminum wheels with painted pockets

6-gauge cluster with MyColor® illumination

6-way power driver seat with power lumbar

Ambient Lighting

Bright-aluminum instrument panel appliqué, pedal covers, door sill scuff plates and shifter knob

Bright-chrome door speaker surrounds

Door-trim panel inserts

Gloss paint center stack and console

Leather-trimmed seats

Leather-wrapped steering wheel with aluminum spokes

Shaker 500 Audio System with AM/FM stereo, 6-disc in-dash CD changer, 8 speakers, MP3 capability and 500 watts

SIRIUS® Satellite Radio² with 6-month subscription

Available Packages

Comfort Package

Electronics Package

Exterior Sport Appearance Package – Rapid Spec 201A

Security Package

V6 Pony Package – Rapid Spec 202A

Available Options

5-speed automatic transmission

18" painted-aluminum wheels³

Soft boot for convertible top

Glass roof (coupe only)⁴

HID headlamps⁵

Rear View Camera⁶

Tape stripe delete

GT

Equipped with all standard features, plus:

Rapid Spec 300A

4.6L SOHC V8 engine with 315 hp @ 6000 rpm and 325 lb.-ft. of torque @ 4250 rpm

5-speed manual GT transmission

3.31:1 gear ratio with limited-slip differential

18" wide-spoke painted-aluminum wheels

Automatic headlamps

Black-chrome pony badge located in grille

Body-color power sideview mirrors

Dual bright rolled exhaust tips

Fog lamps

Rear spoiler

Available Packages

3.73 Rear-Axle Package

Security Package

Available Options

5-speed automatic transmission

Spoiler delete option

GT PREMIUM

Equipped with all standard GT features, plus:

Rapid Spec 400A

Ford SYNC voice-activated communications and entertainment system

6-gauge cluster with MyColor® illumination

6-way power driver seat with power lumbar

Ambient Lighting

Bright-aluminum instrument panel appliqué, pedal covers, door sill scuff plates and shifter knob

Bright-chrome door speaker surrounds

Door-trim panel inserts

Gloss paint center stack and console

Leather-trimmed seats

Leather-wrapped steering wheel with aluminum spokes

Shaker 500 Audio System with AM/FM stereo, 6-disc in-dash CD changer, 8 speakers, MP3 capability and 500 watts

SIRIUS Satellite Radio with 6-month subscription

Cloth top on convertible

Soft boot for convertible top

Available Packages

3.73 Rear-Axle Package

Comfort Package

Electronics Package

TrackPack

Premier Trim With Color Accent Package – Rapid Spec 401A

Security Package

Available Options

5-speed automatic transmission

3.55:1 rear-axle ratio (manual transmission only)

18" polished-aluminum wheels

19" bright machined-aluminum wheels

19" premium painted Luster-nickel aluminum wheels

Glass roof (coupe only)⁴

HID headlamps (requires Security Package)

Rear View Camera (requires rear spoiler)

Shaker 1000 Audio System with AM/FM stereo, 6-disc in-dash CD changer, 10 speakers, MP3 capability and 1000 watts

Spoiler delete option

SHELBY GT500®

Equipped with all standard features, plus:

Rapid Spec 820A

5.4L DOHC V8 engine with 540 hp @ 6000 rpm and 510 lb.-ft. of torque @ 4500 rpm

6-speed manual transmission

9.0 psi boost

3.55:1 gear ratio with limited-slip differential

18" x 9.5" bright machined-aluminum wheels with P255/45R18 Z-rated front and P285/40R18 Z-rated rear tires (convertible)

19" x 9.5" premium painted-aluminum wheels with P255/40R19 Z-rated front and P285/35R19 Z-rated rear tires (coupe)

Forged-steel crankshaft and connecting rods

4-channel Anti-lock Brake System (ABS) with All-Speed Traction Control

Brembo® 14" vented front rotors and 4-piston calipers

11.8" vented rear rotors with 2-piston calipers

SVT-tuned suspension with unique shocks and springs

Tuned stainless steel X-pipe exhaust

Ford SYNC voice-activated communications and entertainment system

6-way power driver seat with power lumbar

Leather-trimmed sport buckets with racing stripe and Alcantara® trim

6-gauge cluster with MyColor® illumination

Ambient Lighting

Cruise control

Leather-wrapped steering wheel with Alcantara trim

Message center with compass

Power door locks and windows with one touch-up/down feature

Shaker 500 Audio System with AM/FM stereo, 6-disc in-dash CD changer, 8 speakers, MP3 capability and 500 watts

SIRIUS Satellite Radio

GT500 badging

GT500 side rocker stripes

Le Mans racing stripes

Power dome hood with heat extractor

Tire Mobility Kit

Unique rear spoiler

Available Package

Electronics Package

Available Options

HID headlamps

Shaker 1000 Audio System with AM/FM stereo, 6-disc in-dash CD changer, 10 speakers, MP3 capability and 1000 watts

¹Driving while distracted can result in loss of vehicle control. Only use mobile phones and other devices, even with voice commands, when it is safe to do so. ²Service not available in Alaska or Hawaii. "SIRIUS," the SIRIUS dog logo and related marks are trademarks of SIRIUS Satellite Radio Inc. ³Not available with V6 Pony Package. ⁴Not available with Stone interior. ⁵Requires V6 Pony Package and Security Package. ⁶Requires Exterior Sport Appearance Package or V6 Pony Package.

FACTORY PACKAGES

TrackPack includes dual-piston front calipers with performance brake pads, performance 3.73 axle ratio, recalibrated AdvanceTrac® electronic stability control¹, GT500® front and rear stabilizer bars, front strut and rear shock tuning, rear GT500 lower control arm, 19" premium painted wheels, summer-only performance tires, and Tire Mobility Kit (available Summer 2009)
Available on GT Premium

3.73 Rear-Axle Package includes dual-piston front calipers, performance brake pads and 3.73 axle ratio, plus recalibrated AdvanceTrac electronic stability control (manual coupe only)
Available on GT and GT Premium

Comfort Package includes heated front seats, 6-way power front-passenger seat, and auto-dimming rearview mirror with compass
Available on V6 Premium and GT Premium

Electronics Package includes Dual-zone Electronic Automatic Temperature Control (DEATC) and hard drive-based, voice-activated Navigation System, featuring about 10 gigabytes of digital storage for pictures and music; includes AM/FM stereo/single-CD/DVD, and MP3 capability
Available on V6 Premium, GT Premium and GT500

Premier Trim With Color Accent Package includes Charcoal Black interior environment with color-accented seats, unique door trim with bright pony badge, dark-aluminum instrument panel, and aluminum shift knob
Available on GT Premium

Exterior Sport Appearance Package includes rear spoiler and lower bodyside tape stripes
Available on V6 and V6 Premium

Security Package includes Active Anti-Theft System and wheel locks
Available on V6, V6 Premium, GT and GT Premium

V6 Pony Package includes Pony grille with chrome bezel, front lower fascia-mounted fog lamps, Pony fender badges, lower bodyside tape stripes, 18" polished-aluminum wheels with P235/50WR18 all-season tires, automatic headlamps, rear spoiler, unique chrome exhaust tip, carpeted floor mats with Pony logo and body-color sideview mirrors
Available on V6 Premium

CUSTOM ACCESSORIES PACKAGES

V6/GT Coupe Accessory Package 1 includes quarter window louvers, side scoops, and decklid face panel

V6/GT Convertible Accessory Package 2 includes side scoops and decklid face panel

V6/GT Stripe Accessory Package 3 includes hood stripe, bodyside stripes, and over-the-top stripe for coupe models; for convertible models this package includes hood stripe and bodyside stripes

GT Coupe/Convertible Accessory Package 4 includes hood scoop and pedestal spoiler

GT Coupe Accessory Package 5 includes hood scoop, pedestal spoiler, side scoops, decklid face panel, and quarter window louvers

GT Convertible Accessory Package 6 includes hood scoop, pedestal spoiler, side scoops, and decklid face panel

GT500 Accessory Package 7 includes vehicle cover with Cobra logo

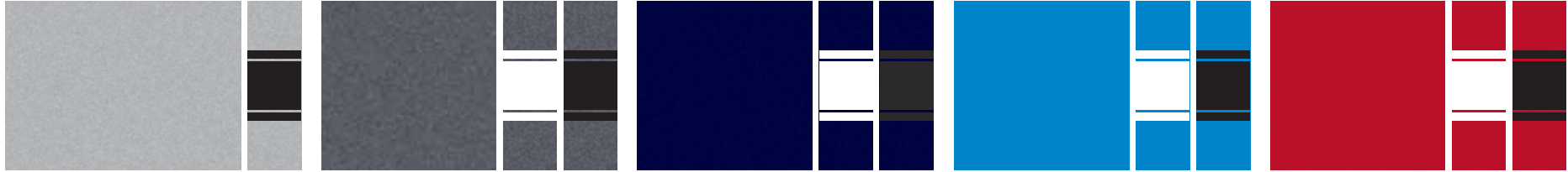
¹Remember that even advanced technology cannot overcome the laws of physics. It's always possible to lose control of a vehicle due to inappropriate driver input for the conditions
 GT500 is a registered trademark of Carroll Hall Shelby Trust.



Exterior COLORS

V6 & GT

EXTERIOR COLORS & STRIPES



Brilliant Silver Metallic

Sterling Grey Metallic

Kona Blue Metallic

Grabber Blue

Torch Red



Red Candy Metallic with Tinted Clearcoat

Performance White

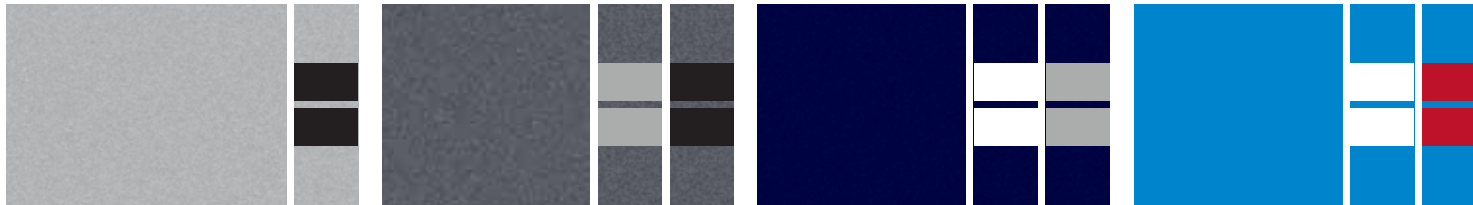
Sunset Gold Metallic

Black

Ford uses clearcoat paint for beauty and protection. Colors shown are representative only. Not all colors are available on all models. See your dealer for actual paint/trim options. Vehicles shown may contain optional equipment.

SHELBY GT500®

EXTERIOR COLORS & STRIPES

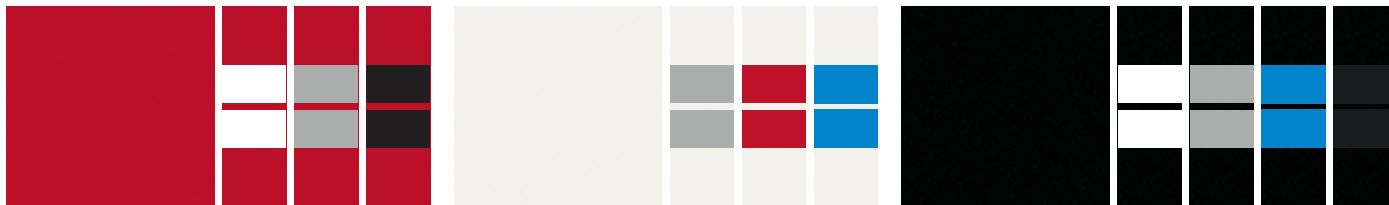


Brilliant Silver Metallic

Sterling Grey Metallic

Kona Blue Metallic

Grabber Blue



Torch Red

Performance White

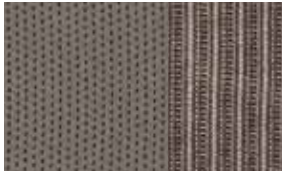
Black

Interior FABRICS

V6 & GT



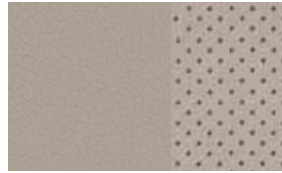
Cloth - Charcoal Black
Standard on V6 and GT



Cloth - Stone
Standard on V6 and GT



Leather - Charcoal Black
Standard on V6 Premium and GT Premium



Leather - Stone
Standard on V6 Premium and GT Premium



Leather - Saddle
Standard on V6 Premium and GT Premium



Leather - Brick Red with Cashmere-colored racing stripe
Available on GT Premium with Premier Trim With Color Accent



Leather - Charcoal Black with Grabber Blue racing stripe
Available on GT Premium with Premier Trim With Color Accent



Leather - Charcoal Black with Cashmere-colored racing stripe
Available on GT Premium with Premier Trim With Color Accent



Cloth seating
Standard on V6 and GT



Leather-trimmed seating
Standard on V6 Premium and GT Premium



Premier Trim With Color Accent leather-trimmed seating
Available on GT Premium

Brilliant Silver Metallic					
Sterling Grey Metallic					
Kona Blue Metallic					
Grabber Blue					
Torch Red					
Red Candy Metallic w/Tinted Clearcoat					
Performance White					
Sunset Gold Metallic					
Black					

INTERIORS:
 Stone vinyl
 Saddle
 Charcoal Black
 Brick Red with Cashmere-colored racing stripe
 Grabber Blue with Cashmere-colored racing stripe
 Charcoal Black with Cashmere-colored racing stripe

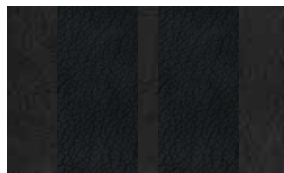
SHELBY GT500®



Leather - Charcoal Black with Brilliant Silver racing stripes



Leather - Charcoal Black with Oxford White racing stripes



Leather - Charcoal Black with Satin Black racing stripes



Leather - Charcoal Black with Grabber Blue racing stripes



Leather - Charcoal Black with Torch Red racing stripes



Leather-trimmed seating with coordinated racing stripe inserts
Standard on GT500

CONVERTIBLE TOPS - ALL MODELS



Brilliant Silver Metallic		
Sterling Grey Metallic		
Kona Blue Metallic		
Grabber Blue		
Torch Red		
Red Candy Metallic w/Tinted Clearcoat		
Performance White		
Sunset Gold Metallic		
Black		

Stone vinyl Black cloth or vinyl

Black cloth standard and only available on GT Premium and Shelby GT500.

Wheels



17" Painted-Aluminum
Standard on V6



**17" Machined-Aluminum
with Painted Pockets**
Standard on V6 Premium



18" Polished-Aluminum
*Standard on V6 Pony Package
Optional on GT Premium*



18" Painted-Aluminum
Optional on V6 Premium



18" Wide-Spoke Painted-Aluminum
Standard on GT and GT Premium



19" Bright Machined-Aluminum
Optional on GT Premium



**19" Premium Painted
Luster-Nickel Aluminum**
Optional on GT Premium



18" Bright Machined-Aluminum
Standard on GT500® Convertible



19" Premium Painted-Aluminum
Standard on GT500 Coupe

JOIN THE CLUB

Mustang Nation – built on 45 years of passion and more than 9 million Mustangs – has celebrated an American icon since 1964. There are now more than 500 Mustang clubs worldwide, from New Mexico to New Zealand. Join up. Hang out. Mustang Nation is waiting.

FORD PERFORMANCE GROUP fordperformance.com

INTERNATIONAL MUSTANG BULLITT™ OWNERS CLUB imboc.com

MACH I REGISTRY mach1registry.com

MUSTANG CLUB OF AMERICA mustang.org

SVT OWNERS ASSOCIATION svtoa.com

TEAM SHELBY teamshelby.com



TM and © Warner Bros. Entertainment Inc. (SOB)

THE FACTS ABOUT FORD.



Drive quality.

FACT: On top of earning 8 *Consumers Digest* “Best Buy” awards for 2009 models, Ford Motor Company is **unsurpassed** by Toyota and Honda when it comes to quality.¹



Drive green.

FACT: Ford builds the **most fuel-efficient midsize sedan** in America (Fusion Hybrid: 41 mpg city)² and the **most fuel-efficient SUV** on the planet (Escape Hybrid: 34 mpg city).³



Drive safe.

FACT: No other car company offers you more vehicles that have received both 2009 IIHS “Top Safety Pick” and NHTSA 5-Star crash test ratings.⁴



Drive smart.

FACT: The voice-activated **Ford SYNC**® customizable media system and **EcoBoost™ V6 engines** are just a few of the innovative technologies you can only find in a Ford.

Visit fordvehicles.com to learn more.



Drive one.

¹Based on cumulative survey data of 2008 MY Ford and competitive owners at 3 months of service in 3 surveys conducted 9/07–5/08. ²EPA-estimated 23 mpg city/34 hwy., combined 27 mpg, for Fusion S1-4 automatic; 41 mpg city/36 hwy. for Fusion Hybrid. Actual mileage will vary. Midsize class per R. L. Polk. ³Based on unadjusted city fuel economy from EPA (10/08) and VCA (5/08). 2009 EPA-estimated 34 mpg city/31 hwy. for Escape Hybrid FWD. Excluding vehicles built for Mazda. ⁴Based on NHTSA 5-Star ratings for all 4 crash test categories. Star ratings are part of the U.S. Department of Transportation's Safercar.gov program (www.safercar.gov).