

2010  
EXPLORER 



EXPLORER   
2010



Explorer Limited in Brilliant Silver Metallic with available equipment

## Delivering freedom of **choice.**

When you take the wheel of Explorer, you're driving one of the most **popular**, **versatile**, **capable** vehicles of its kind. For millions of owners, Explorer means the freedom to go where you want, and do what you want. It's a **proven off-roader** with the guts to take on the backcountry. It's a **powerful towing machine**.

And of course, Explorer is very **comfortable and accommodating**, with room for all your stuff. If you're looking for one vehicle to keep up with your active life, it's right here. Do as you choose. Explorer is ready.



EXPLORER   
2010



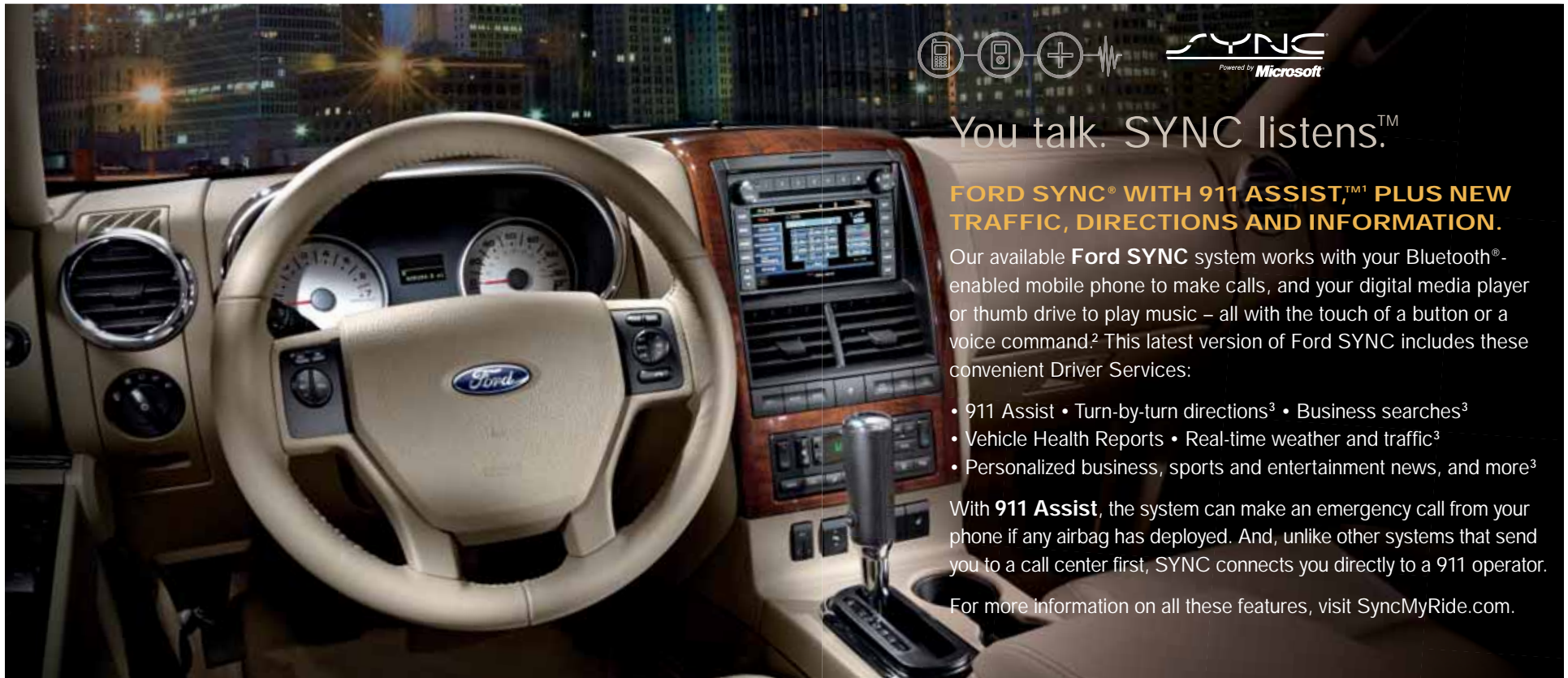
Explorer Eddie Bauer® in Dark Copper Metallic  
with available equipment

## You've got a lot of **capabilities to call on.**

Explorer **hugs the road** and delivers a quiet, comfortable ride. Yet it's also off-road ready with optional **Control Trac® 4-wheel drive**. Properly equipped, Explorer tows **up to 7115 lbs.**<sup>1</sup> And every Explorer is equipped for extra confidence with

standard **Trailer Sway Control**.<sup>2</sup> Get maximum power with the available 4.6L 3-valve V8, first-in-class<sup>3</sup> 6-speed automatic transmission and **fuel efficiency** of up to 20 mpg.<sup>4</sup> In short, one **hugely talented transport** indeed.

<sup>1</sup>Based on 2009 model year ratings. Maximum capability less vehicle occupants, cargo and other equipment. See your Owner's Guide, your Ford Dealer and the RV and Trailer Towing Guide for safety information and limitations. <sup>2</sup>Remember that even advanced technology cannot overcome the laws of physics. It's always possible to lose control of a vehicle due to inappropriate driver input for the conditions. For more information on Trailer Sway Control, visit [fordvehicles.com](http://fordvehicles.com). <sup>3</sup>Truck-based Midsize SUV class, excluding other Ford Motor Company vehicles. <sup>4</sup>2009 EPA-estimated 14 mpg city/20 hwy. with 4.0L engine on 4x2; 14 mpg city/19 hwy. with 4.6L engine on 4x4.



You talk. SYNC listens.™

**FORD SYNC® WITH 911 ASSIST,™¹ PLUS NEW TRAFFIC, DIRECTIONS AND INFORMATION.**

Our available Ford SYNC system works with your Bluetooth®-enabled mobile phone to make calls, and your digital media player or thumb drive to play music – all with the touch of a button or a voice command.² This latest version of Ford SYNC includes these convenient Driver Services:

- 911 Assist • Turn-by-turn directions³ • Business searches³
- Vehicle Health Reports • Real-time weather and traffic³
- Personalized business, sports and entertainment news, and more³

With **911 Assist**, the system can make an emergency call from your phone if any airbag has deployed. And, unlike other systems that send you to a call center first, SYNC connects you directly to a 911 operator.

For more information on all these features, visit [SyncMyRide.com](http://SyncMyRide.com).

## Technology keeps you **connected.**

### NAVIGATION WITH SIRIUS TRAVEL LINK.™

Displayed on a generous **6.5" LCD touch screen**, the optional GPS-linked Navigation System offers voice activation for everything from driving directions to accessing music. It also provides nearly **10 gigs of storage space** for photos (on your home page) and music (up to 2400 songs). SIRIUS Travel Link is the source for **up-to-the-minute** local traffic, weather, fuel prices, sports scores and movie listings.⁴ So you're always in the know.

### SIRIUS® SATELLITE RADIO.

Available SIRIUS Satellite Radio comes with a 6-month trial subscription: Surf more than **130 channels** – including **100% commercial-free** music, plus the best of sports, news, talk and entertainment, coast-to-coast.

¹The vehicle's electrical system (including the battery), the wireless service provider's signal, and a connected mobile phone must all be available and operating for 911 Assist to function properly. These systems may become damaged in a crash. The paired mobile phone must be turned on, connected to SYNC, and the 911 Assist feature enabled in order for 911 to be dialed. ²Driving while distracted can result in loss of vehicle control. Only use mobile phones and other devices, even with voice commands, when it is safe to do so. ³SYNC with Traffic, Directions and Information available Summer 2009. These SYNC services not available with SIRIUS Travel Link or Navigation System. See your dealer for details. ⁴Real-time traffic monitoring available in select markets. Some features are unavailable while driving. Subscription required after introductory 6 months expire. Service only available in the 48 contiguous United States and the District of Columbia.





Explorer Limited Interior in Charcoal Black with available equipment

## Seat 7 in **comfort and style.**

Supple leather trim sets **a sophisticated tone**. Cozy heated 1st-row seats **fit like a glove**, while Dual-zone Electronic Automatic Temperature Control ensures the climate is **always just right**. Choose amenities to help ensure that you and your passengers arrive relaxed and refreshed from every drive.

## One flexible cargo carrier.

Not only does Explorer offer you everyday transportation, off-road capability and towing – when you need it to carry **lots of cargo**, you'll find Explorer is more than **up to the task**. And look at all the **flexibility** you get in the bargain. From seats that fold in lots of **convenient configurations**, to handy **Ford Custom Accessories** to help keep you organized, Explorer is ready for just about **anything, anytime, anywhere**.

- a. Behind the 1st row, 7-passenger models hold **UP TO 83.7 CU. FT.** of gear and 5-passenger models hold **UP TO 85.8 CU. FT.**<sup>1</sup>
- b. Our class-exclusive **POWERFOLD® 3RD-ROW SEAT** is standard on Limited and conveniently controlled with buttons located in the rear cargo area.
- c. A **RETRACTABLE CARGO SHADE** is standard on XLT.
- d. The **INTERIOR CARGO ORGANIZER** is a removable and adjustable divider system. Available from Ford Custom Accessories.
- e. Available seating configurations: Take 7 with the standard **2ND-ROW 60/40 SPLIT-FOLDING SEAT** and the available **3RD-ROW 50/50 SPLIT FOLD-FLAT SEAT**. For 6, choose available **QUAD BUCKET SEATING** and the optional 3rd row. To seat 5, all you need is the standard 2nd row.



<sup>1</sup>Cargo and load capacity limited by weight and weight distribution.





Explorer XLT in Torch Red with XLT Sport Package and Ford Licensed Accessory - THULE® Rack

## **Athletic** lifestyle required.

Experience a bolder Explorer with the **XLT Sport Package**. Rolling on **20" polished-aluminum wheels**, you'll find Black exterior accents and a stylized exhaust tip outside, plus the drama of a **Charcoal Black interior**, unique trim

appliqués and a striking **white instrument cluster** inside. And for seriously athletic handling, choose optional **All-Wheel Drive**. It's time to get your game on with Explorer Sport.

EXPLORER  2010



Explorer XLT in White Suede with available equipment

## Ready with a **controlled response.**

Standard **AdvanceTrac® with class-exclusive RSC®** (Roll Stability Control™) is the only automotive electronic stability control system that can **measure roll rate 100 times per second**. Working with the Anti-lock Brake System (ABS), traction control and yaw control, it **automatically** determines when and how to apply the brakes and modify engine power to help **keep all 4 wheels**

**firmly planted**.<sup>1</sup> It really proves its worth when you have to make an emergency maneuver, drive on slippery terrain or just travel on uneven surfaces. Just one more way Explorer can help you **handle things beyond your control**.

<sup>1</sup>Remember that even advanced technology cannot overcome the laws of physics. It's always possible to lose control of a vehicle due to inappropriate driver input for the conditions. For more information on AdvanceTrac with RSC, visit [fordvehicles.com](http://fordvehicles.com).





Explorer XLT in Brilliant Silver Metallic with available equipment

- A** In certain side-impact collisions, the standard **Safety Canopy® System** deploys 1st- and 2nd-row side-curtain airbags to enhance protection for outboard-seated occupants.
- B** Our class-exclusive **Intelligent Safety System™** is standard on every Explorer. In certain frontal collisions, it enhances the protection of front-seat passengers by adjusting the performance of the front airbags and safety belt retractors. Additional protection is afforded by standard front-seat side airbags.
- C** In the event of a frontal crash, the **adaptive stroking steering column** works like a shock absorber, in conjunction with your safety belt and the front airbag, to help reduce the impact to your chest.

## Safety systems surround you.

Our **cutting-edge safety and security features** are designed to help protect you and your loved ones. A standard **SOS Post-Crash Alert System™** automatically activates in the event of airbag deployment or safety belt pretensioner

activation in certain collisions.<sup>2</sup> The system **attracts attention** to your vehicle by flashing the hazard lights and sounding the horn. A suite of class-exclusive systems is standard on every model. Explorer is always working to help keep you safe and sound.

<sup>1</sup>2006–2009 model years. Star ratings are part of the U.S. Department of Transportation's Safercar.gov program ([www.safercar.gov](http://www.safercar.gov)). <sup>2</sup>SOS hardware may become damaged or the battery may lose power in a crash, which could prevent operation. Not all crashes will activate an airbag or safety belt pretensioner.

# Specs.

## DIMENSIONS & CAPACITIES

<b>Exterior</b>	
Wheelbase	113.7"
Length	193.4"
Height (with options)	72.8"
Width – Excluding mirrors	73.7"
Width – Including mirrors	84.8"
Width – Mirrors folded	77.5"
Minimum running ground clearance	8.3"
Liftover height	31.4"
Overhang – Front	35.4"
Overhang – Rear	44.3"
Ramp breakover angle	18.4°
Angle of approach	28.2°
Angle of departure	23.8°
<b>Interior</b>	
<b>1st Row</b>	
Head room	39.8"
Shoulder room	59.0"
Hip room	55.4"
Leg room	42.4"
<b>2nd Row</b>	
Head room	38.7"
Shoulder room	58.9"
Hip room	55.5"
Leg room	36.9"
<b>3rd Row (if equipped)</b>	
Head room	37.4"
Shoulder room	53.1"
Hip room	45.3"
Leg room	34.9"
<b>Cargo Volume (cu. ft.)</b>	
	5-passenger/7-passenger
Behind 1st row	85.8/83.7
Behind 2nd row	45.1/43.9
Behind 3rd row (if equipped)	—/13.6
<b>Capacities</b>	
Fuel capacity	22.5 gal.
<b>Maximum Loaded Trailer Weight<sup>1</sup></b>	
<b>4.0L SOHC V6 Engine</b>	
4x2 (Class II)	3500 lbs.
4x4 (Class II)	3500 lbs.
4x2 (Class III/IV)	5375 lbs.
4x4 (Class III/IV)	5205 lbs.
AWD (Class III/IV)	5000 lbs.
<b>4.6L 3V V8 Engine</b>	
4x4 (Class II)	3500 lbs.
4x4 (Class III/IV)	7115 lbs. <sup>2</sup>
AWD (Class III/IV)	7115 lbs. <sup>2</sup>

Dimensions may vary by trim level.  
Cargo and load capacity limited by weight and weight distribution.

## STANDARD

<b>Mechanical</b>	
4.0L SOHC V6 engine with 5-speed automatic transmission	
4-wheel Anti-lock Brake System (ABS)	
130-amp alternator	
3.55 axle ratio	
Class II trailer tow hitch receiver with 4-pin wiring harness	
Independent front and rear suspension	
Maintenance-free 72-amp battery	
<b>Safety &amp; Security</b>	
Intelligent Safety System™ for driver and front passenger includes front airbags <sup>3</sup> with adaptive venting and airbag inflators, safety belt pretensioners, adaptive load-limiting safety belt retractors, safety belt usage sensors, driver-seat position sensor, crash severity sensor, restraint control module, Front-Passenger Sensing System and adaptive stroking energy-absorbing steering column	
AdvanceTrac® with RSC® (Roll Stability Control™)	
Battery saver	
Belt-Minder® front safety belt reminder	
Front-seat side airbags <sup>3</sup>	
Illuminated entry	
LATCH – Lower anchors and tether anchors for child-safety seats in 2nd-row outboard positions	
Remote keyless-entry system with 2 integrated keyhead transmitter remotes	
Safety Canopy® System with side-curtain airbags <sup>3</sup> and rollover sensor	
SecuriLock® passive anti-theft ignition system	
SOS Post-Crash Alert System™ flashes hazard lights and sounds horn after airbag deployment or safety belt pretensioner activation in certain collisions	
Tire Pressure Monitoring System (excludes spare)	
Trailer Sway Control	
<b>Interior</b>	
2nd-row 60/40 split-folding bench seat with recline	
Air conditioning	
Auxiliary audio input jack	
Cargo Management System	
Cargo shade (not included with 3rd row)	
Coat hooks (4)	
Cruise control	
Dome/map lights in 1st and 2nd rows	
Floor console with floor shifter	
Front and rear carpeted floor mats	
Grab handles (1 for front passenger; 2 in 2nd row)	
Illuminated glove compartment	
Illuminated visor vanity mirrors	
Leather-wrapped steering wheel with cruise and secondary audio controls	
Load/floor tie-down hooks (4)	
Manual day/night rearview mirror	
Power points (3)	
Power windows with one-touch-down driver-window feature	

## Exterior

Body-color door handles
Easy Fuel™ capless fuel filler
Fog lamps
One-piece liftgate with flip-open rear window
Power sideview mirrors with security approach lamps
Privacy glass (rear doors, rear quarter windows and liftgate window)
Rear-window defroster
Roof side rails and crossbars
Windshield wipers – Intermittent front and rear (speed-sensitive)

**New Vehicle Limited Warranty.** We want your Ford Explorer ownership experience to be the best it can be. So under this warranty, your new vehicle comes with 3-year/36,000-mile Bumper-to-Bumper Coverage, 5-year/60,000-mile Powertrain Warranty Coverage, 5-year/50,000-mile Safety Restraint Coverage, and 5-year/unlimited-mile Corrosion (Perforation) Coverage – all with no deductible. Please ask your Ford Dealer for a copy of this limited warranty.

**Roadside Assistance.** Covers your vehicle for 5 years or 60,000 miles, so you have the security of knowing that help may be only a phone call away should you run out of fuel, lock yourself out of the vehicle, or need towing. Your Ford Dealer can provide complete details on all of these advantages.

**Ford Credit.** Get the ride you want. Whether you plan to lease or finance, you'll find the choices that are right for you at Ford Credit. Ask your Ford Dealer for details or check us out at [fordcredit.com](http://fordcredit.com).

**Ford Extended Service Plan.** For a purchase or lease, the Ford Extended Service Plan (ESP) gives you "Peace-of-Mind" protection designed to cover key vehicle components and protect you from the cost of unexpected repairs. Ask your dealer for a Ford ESP, the only service contract backed exclusively by Ford and honored at all Ford Lincoln Mercury dealerships.

**Insurance Services.** Get Ford Motor Company quality in your auto insurance. Our program offers industry-leading benefits and competitive rates. Call 1-877-367-3847, or visit us at [fordvip.com](http://fordvip.com) for a no-obligation quote. Insurance offered by American Road Services Company (in CA, American Road Insurance Agency), a licensed agency and subsidiary of Ford Motor Company.

Comparisons based on 2009 competitive models (Truck-based Midsize SUV class), publicly available information and Ford certification data at time of release. Some features discussed may be optional. Vehicles shown may contain optional equipment. Features shown may be offered only in combination with other options or subject to additional ordering requirements or limitations. Dimensions shown may vary due to optional features and/or production variability. Following release of the PDF, certain changes in standard equipment, options and the like, or product delays may have occurred which would not be included in these pages. Your Ford Dealer is the best source for up-to-date information. Ford Division reserves the right to change product specifications at any time without incurring obligations.

<sup>1</sup>Based on 2009 model year ratings. Maximum weights shown are for properly equipped vehicles with required equipment and a 150-lb. driver. Weight of additional options, equipment, passengers and cargo must be deducted from this weight. For additional information, see your Ford Dealer. <sup>2</sup>Deduct 500 lbs. when equipped with auxiliary rear climate control. <sup>3</sup>Always wear your safety belt and secure children in the rear seat.

SIRIUS is a registered trademark of SIRIUS XM Radio Inc. Subscriptions governed by SIRIUS Terms and Conditions at [sirius.com/serviceterms](http://sirius.com/serviceterms).

Microsoft is a registered trademark of Microsoft Corporation.

The Bluetooth word mark is a trademark of the Bluetooth SIG, Inc.





## EXPLORER XLT

Equipped with all standard features, plus:

### Rapid Spec 100A:

- 16" painted-aluminum wheels with P235/70R16 all-season OWL tires
- Body-color bumpers and wheel-lip moldings
- 4-bar chrome grille
- Black roof side rails and crossbars
- Black power sideview mirrors with security approach lamps
- Premium cloth 1st-row bucket seats with 6-way power driver seat, driver manual lumbar and 2-way adjustable head restraints
- AM/FM stereo/single-CD player
- 2-line message center with outside temperature display

### Available Option Groups

- Rapid Spec 101A: SYNC & SIRIUS Package:** Ford SYNC® voice-activated, in-vehicle communications and entertainment system, and SIRIUS Satellite Radio
- Rapid Spec 102A: SYNC & SIRIUS Package + XLT Convenience Package:** automatic headlamps, auto-dimming rearview mirror, SecuriCode™ keyless-entry keypad, message center with compass, power-adjustable pedals and Reverse Sensing System + **XLT Appearance Package:** 17" machined-aluminum wheels with P245/65R17 all-season OWL tires and step bars + manual 3rd-row 50/50 split fold-flat bench seat + power moonroof
- Rapid Spec 103A: SYNC & SIRIUS Package + XLT Convenience Package + XLT Sport Package:** 20" polished-aluminum wheels with P255/50R20 all-season BSW tires; 3-bar Black grille with nostrils; Black wheel-lip moldings, fascia and step bar accents; body-color sideview mirrors; Sport badge; blackout treatment for headlamps; unique exhaust tip; White instrument cluster; and all-weather floor mats (Available only with Charcoal Black interior on XLT 4x2 and AWD only) + manual 3rd-row 50/50 split fold-flat bench seat + power moonroof

### Available Options & Packages

- Auxiliary rear climate control<sup>1</sup>
- Class III/IV Trailer Tow Package:** 7-pin trailer wiring harness and connector, 7- to 4-pin adapter, engine oil cooler (V6 only) and frame-mounted hitch receiver (3.73 non-limited-slip rear axle required and only available with Class III/IV Trailer Tow Package and 4.0L V6)
- Control Trac® 4-wheel-drive (4WD) system
- Front and rear all-weather rubber floor mats
- Manual 3rd-row 50/50 split fold-flat bench seat<sup>2</sup>
- Leather-trimmed seats with 1st-row heated bucket seats including 10-way power driver seat with power lumbar and recline (vinyl 3rd row, if equipped)<sup>3</sup>

## EXPLORER EDDIE BAUER®

Equipped with select standard XLT features, plus:

### Rapid Spec 200A:

- 17" painted-aluminum wheels with P245/65R17 all-season OWL tires
- Pueblo Gold lower front bumper, rear bumper and wheel-lip moldings
- 3-bar chrome grille with nostrils
- Automatic headlamps
- Body-color power sideview mirrors with security approach lamps
- SecuriCode keyless-entry keypad
- Step bars with Pueblo Gold accents
- Leather-trimmed, heated 1st-row bucket seats with 10-way power driver seat, including power lumbar and recline
- Manual 3rd-row 50/50 split fold-flat bench seat
- SIRIUS Satellite Radio
- Ford SYNC
- Woodgrain interior accents
- 4-line message center with outside temperature display and compass
- Auto-dimming rearview mirror

### Available Option Group

- Rapid Spec 201A: Eddie Bauer Convenience Package:** driver seat with memory feature; 6-way power passenger seat; power, heated sideview mirrors; power-adjustable pedals with memory; Dual-zone Electronic Automatic Temperature Control; Reverse Sensing System; and Universal Garage Door Opener + power moonroof + Premium Sound System with AM/FM stereo/6-disc in-dash CD changer, subwoofer and 190 watts

### Available Options & Packages

- 4.6L 3-valve V8 engine with 6-speed automatic transmission (Available only with Control Trac 4WD)
- 18" chrome-clad aluminum wheels with P235/65R18 all-season OWL tires<sup>4</sup>
- Auxiliary rear climate control<sup>4</sup>
- Class III/IV Trailer Tow Package**
- Control Trac 4-wheel-drive (4WD) system
- Front and rear all-weather rubber floor mats
- Rear-Seat DVD Entertainment System<sup>4</sup>
- Voice-activated Navigation System with a nearly 10-gigabyte hard drive, single-disc Premium Sound System and SIRIUS Travel Link™ services with 6-month subscription<sup>4</sup>

## EXPLORER LIMITED

Equipped with select standard Eddie Bauer features, plus:

### Rapid Spec 300A:

- 18" chrome-clad aluminum wheels with P235/65R18 all-season OWL tires
- Body-color bumpers and wheel-lip moldings
- 4-bar chrome grille
- Chrome roof side rails with black end caps and crossbars
- Chrome-capped power, heated sideview mirrors with security approach lamps
- Step bars with chrome accents
- Reverse Sensing System
- Leather-trimmed, heated 1st-row bucket seats with 10-way power driver seat, including power lumbar, recline and memory; and 6-way power passenger seat with manual lumbar
- PowerFold® 3rd-row seat
- Power-adjustable pedals with memory
- Premium Sound System with AM/FM stereo/6-disc in-dash CD changer, subwoofer and 190 watts
- Unique woodgrain interior inserts
- Center floor console with unique appearance for center finish and wrapped armrest
- Dual-zone Electronic Automatic Temperature Control
- Auxiliary rear climate control
- Universal Garage Door Opener

### Available Option Groups

- Rapid Spec 301A: Navigation & Moon Package:** Navigation System with SIRIUS Travel Link and power moonroof
- Rapid Spec 302A: Navigation & Moon Package** + All-Wheel Drive (AWD) + 20" polished-aluminum wheels with P255/50R20 all-season BSW tires

### Available Options & Packages

- 4.6L 3-valve V8 engine with 6-speed automatic transmission (Available only with Control Trac 4WD or AWD)
- Class III/IV Trailer Tow Package**
- Control Trac 4-wheel-drive (4WD) system
- Front and rear all-weather rubber floor mats
- Power-deployable running boards with chrome accents<sup>5</sup>
- Power moonroof with mini-overhead console and sunshade
- Quad Bucket Seating including 2nd-row bucket seats and floor console<sup>5</sup>
- Rear-Seat DVD Entertainment System

## HORSEPOWER, TORQUE & FUEL ECONOMY<sup>6</sup>

### 4.0L SOHC V6 Engine

Horsepower	210 @ 5100 rpm
Torque (lb.-ft.)	254 @ 3700 rpm
5-speed automatic	
2WD	14 mpg city/20 hwy.
4WD	13 mpg city/19 hwy.

### 4.6L 3V V8 Engine

Horsepower	292 @ 5700 rpm
Torque (lb.-ft.)	315 @ 4000 rpm
6-speed automatic	
4WD	14 mpg city/19 hwy.

<sup>1</sup>Requires Rapid Spec 102A or 103A. <sup>2</sup>Requires Rapid Spec 101A. <sup>3</sup>Requires Rapid Spec 102A. <sup>4</sup>Requires Rapid Spec 201A. <sup>5</sup>Requires Rapid Spec 301A or 302A. <sup>6</sup>2009 EPA-estimated fuel economy.

# Exterior colors.



Sangria Red Metallic



Blue Flame Metallic



Dark Copper Metallic



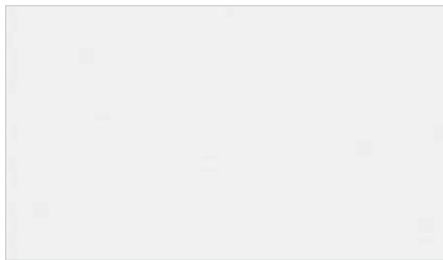
Black Pearl Slate Metallic



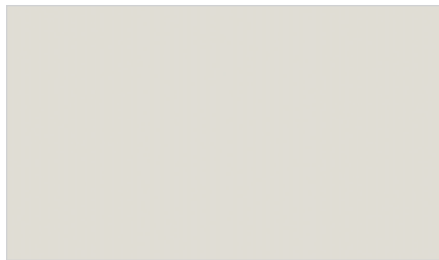
Black



Brilliant Silver Metallic



White Platinum Metallic Tri-Coat



White Suede



Torch Red

Interior Colors

**XLT**

Sangria Red Metallic	●	●
Blue Flame Metallic	●	●
Dark Copper Metallic	●	●
Black Pearl Slate Metallic	●	●
Black	●	●
Brilliant Silver Metallic		●
White Suede	●	●

**XLT Sport**

Blue Flame Metallic		●
Black		●
Brilliant Silver Metallic		●
Torch Red		●

**Eddie Bauer®**

Sangria Red Metallic	●	●
Blue Flame Metallic	●	●
Dark Copper Metallic	●	●
Black Pearl Slate Metallic	●	●
Black	●	●
White Platinum Metallic Tri-Coat	●	●
White Suede	●	●

**Limited**

Sangria Red Metallic	●	●
Blue Flame Metallic	●	●
Dark Copper Metallic	●	●
Black Pearl Slate Metallic	●	●
Black	●	●
Brilliant Silver Metallic		●
White Platinum Metallic Tri-Coat	●	●

INTERIORS: ● Camel ● Charcoal Black

Colors shown are representative only. Not all colors are available on all models. See your dealer for actual paint/trim options.



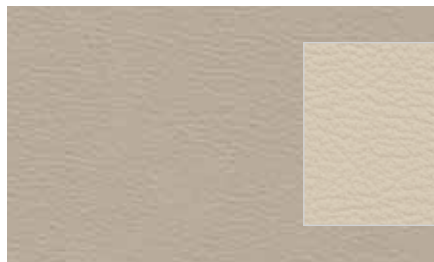
# Interior colors.



**Leather – Charcoal Black with Camel inserts**  
Standard on Eddie Bauer



**Leather – Charcoal Black**  
Optional on XLT



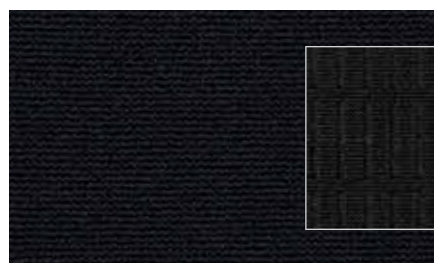
**Leather – Camel with Sand inserts**  
Standard on Eddie Bauer, Optional on XLT



**Leather – Charcoal Black with perforated inserts**  
Standard on Limited



**Cloth – Camel with Sand inserts**  
Standard on XLT



**Cloth – Charcoal Black**  
Standard on XLT

# Wheels.



**16" Painted-Aluminum**  
Standard on XLT



**17" Machined-Aluminum**  
Included in XLT Appearance Package



**17" Painted-Aluminum**  
Standard on Eddie Bauer®



**18" Chrome-Clad Aluminum**  
Standard on Limited, Optional on Eddie Bauer



**20" Polished-Aluminum**  
Available on Limited, Included in XLT Sport Package

# Accessories.



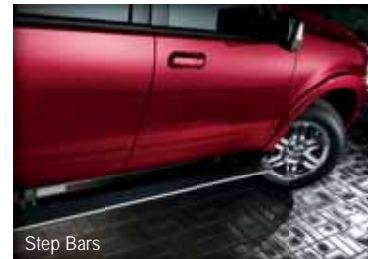
Interior Soft Cargo Organizers (Large and Standard Sizes) and Interior Soft Cargo Cooler Bag



THULE® Racks, Carriers and Cargo Holders<sup>1</sup>



Remote Start Systems



Step Bars



Interior Cargo Area Protector and Organizer



Dual INVISION™ DVD Headrests<sup>1</sup>

- Also available:
- Ambient Lighting Kit
  - Katzkin® Leather Seat Covers<sup>1</sup>
  - Electrochromic Mirrors
  - Keyless Entry Keypad
  - Vehicle Security System
  - SmartAlert™ GPS Tracking and Recovery<sup>1</sup>
  - Moonroof Deflector
  - Side Window Deflectors
  - Hood Deflector (Mini and Wrap-Around)
  - Splash Guards
  - Interior Cargo Net
  - Running Boards
  - Wiper Shaker De-Icer and Debris Cleaner<sup>1</sup>
  - Wheel Locks
  - EchoMaster® HitchScan™ Rear Park Assist Sensor and Hitch Step<sup>1</sup>
  - Sportz® SUV Tent<sup>1</sup>
  - Electric Safety Tow
  - Exterior Fuel Door
  - Hitch and Hitch Balls
  - Hitch Bar
  - All-Weather Floor Mats
  - Ashcup/Coin Holder/Smoker's Pack

<sup>1</sup>Ford Licensed Accessories.  
Garmin is a registered trademark of Garmin Ltd.



Exhaust Tip



Garmin® Portable Navigation Systems<sup>1</sup>



Cargo-Logic® System

To learn more about Ford Custom Accessories and to buy them online, visit [fordaccessories.com](http://fordaccessories.com).

Genuine Ford Accessories will be warranted for whichever provides you the greatest benefit: 12 months or 12,000 miles (whichever occurs first), or the remainder of your Bumper-to-Bumper 3-year/36,000-mile New Vehicle Limited Warranty. Contact your local Ford Dealer for details and a copy of the limited warranty. Ford Licensed Accessories (FLA) are warranted by the accessory manufacturer's warranty. Contact your Ford Dealer for details regarding the manufacturer's limited warranty and/or a copy of the FLA product limited warranty offered by the accessory manufacturer.

custom accessories 





## THE FACTS ABOUT FORD.



### Drive quality.

**FACT:** On top of earning 8 *Consumers Digest* "Best Buy" awards for 2009 models, Ford Motor Company is **unsurpassed** by Toyota and Honda when it comes to quality.<sup>1</sup>



### Drive green.

**FACT:** Ford builds the **most fuel-efficient midsize sedan** in America (Fusion Hybrid: 41 mpg city)<sup>2</sup> and the **most fuel-efficient SUV** on the planet (Escape Hybrid: 34 mpg city).<sup>3</sup>



### Drive safe.

**FACT:** No other car company offers you more vehicles that have received both 2009 IIHS "Top Safety Pick" and NHTSA 5-Star crash test ratings.<sup>4</sup>



### Drive smart.

**FACT:** The voice-activated **Ford SYNC**® customizable media system and **EcoBoost™ V6 engines** are just a few of the innovative technologies you can only find in a Ford.

Visit [fordvehicles.com](http://fordvehicles.com) to learn more.



Drive one.

<sup>1</sup>Based on RDA Group's GORS cumulative survey at 3 months of service in 3 surveys of 2008 MY Ford and competitive owners conducted 9/07-5/08. <sup>2</sup>EPA-estimated 23 mpg city/34 hwy., 27 mpg combined, Fusion S I-4 automatic; 41 mpg city/36 hwy., Fusion Hybrid. Actual mileage will vary. Midsize class per R. L. Polk. <sup>3</sup>Based on unadjusted city fuel economy from EPA (10/08) and VCA (5/08). 2009 EPA-estimated 34 mpg city/31 hwy. for Escape Hybrid FWD. Excluding vehicles built for Mazda. <sup>4</sup>Based on NHTSA 5-Star ratings for all 4 crash test categories. Star ratings are part of the U.S. Department of Transportation's Safercar.gov program ([www.safercar.gov](http://www.safercar.gov)).