



ESCAPE+HYBRID



2010



Escape Hybrid Limited in Steel Blue Metallic and Escape XLT in Sangria Red Metallic

## Fuel-sipping, fun-loving, adventure seekers.

You've got a green light for fun in **Escape and Escape Hybrid**. With up to **34 mpg city**, Escape Hybrid is the most fuel-efficient SUV on the planet.<sup>1</sup> The standard 2.5L I-4 engine on Escape gets **28 mpg hwy**.<sup>2</sup> Both offer the capability of available 4WD and tons of smart new

technology including our latest Ford SYNC<sup>®</sup> voice-activated, customizable media system and available **Active Park Assist** – which helps you parallel park in as little as 24 seconds – leaving you more time for adventure.

<sup>1</sup>Based on unadjusted city fuel economy from EPA (10/08) and VCA (5/08). 2009 EPA-estimated 34 mpg city/31 hwy. for Escape Hybrid FWD. Excluding vehicles built for Mazda. <sup>2</sup>2009 EPA-estimated fuel economy: 22 mpg city/28 hwy. for Escape FWD with 2.5L I-4 and 5-speed manual; 20 mpg city/28 hwy. for Escape FWD with 2.5L I-4 and 6-speed automatic.

34  
mpg city



Escape Hybrid Limited in Kiwi Green Metallic with available equipment

## Escape Hybrid: The most fuel-efficient SUV on the planet.<sup>1</sup>

The powertrain is so self-sufficient, it actually **recharges itself**. The 2.5L I-4 Atkinson-cycle engine works with the electric traction motor to move you with **177 net hp**. When you apply the brakes during normal driving, the Regenerative Braking process captures kinetic energy from your braking to recharge the 330-volt battery pack. The battery pack then supplies

energy to start the engine and to drive in **100% electric mode up to 44 mph**. When passing or merging, hybrid drive mode delivers an extra power boost for lively acceleration performance while still delivering lower average fuel costs. It's the best of both worlds.

<sup>1</sup>Based on unadjusted city fuel economy from EPA (10/08) and VCA (5/08). 2009 EPA-estimated 34 mpg city/31 hwy. for Escape Hybrid FWD. Excluding vehicles built for Mazda.



ESCAPE+HYBRID  2010



Escape XLT in Ingot Silver Metallic with available equipment

## 4WD gets you out there.

With fully independent suspensions and outstanding clearance, both Escape and Escape Hybrid are **naturally nimble** enough to drive up and over some formidable obstacles that some others will have to waste time driving around. If you prefer the road less traveled, go

for the optional **Intelligent 4WD System**. Always on and always working, it automatically monitors traction 200 times per second (much faster than any person could) and adjusts torque distribution as needed to give you **maximum grip**. It's got serious skills.



Escape Limited in White Suede with available equipment

## Active Park Assist conquers parallel parking.

In as little as **24 seconds**. Just press a button and drive by potential spots to activate the system. **Active Park Assist** uses its sensors to take some measurements and prompts you when it's ready to park. You simply respond to system prompts and control vehicle speed using the gear shifter, gas and brake pedals – while it handles the hard parts – figuring out if the spot is big enough and **automatically steering the vehicle** into it. New for 2010, this remarkably intelligent system is optional on Escape Limited and Escape Hybrid Limited. It's bound to be your new best friend.



### MyKey™ – positively habit-forming.

The MyKey owner controls feature, also new for 2010, is standard on XLT, Limited, Hybrid and Hybrid Limited. It lets you program ignition keys with specific parameters to help encourage smart driving habits, such as buckling up and traveling at appropriate speeds. MyKey is perfect for reminding drivers of all ages to abide by the rules of the road.





Escape Limited in Black with available equipment



## Gas engines flex, tow, sip and go.

Escape's available **Duratec® 30-3.0L V6 engine** is Flex Fuel capable this year, so you can run it on gasoline, E85 (85% ethanol and 15% gasoline), or any blend of the two. Mated to an efficient 6-speed automatic transmission, it cranks out **240 hp** and tows up to **3500 lbs.** when properly equipped.

**I-4 gets up to 28 mpg hwy.<sup>1</sup>** Whether you pair it with the standard 5-speed manual transmission or the available 6-speed automatic, the standard Duratec 25-2.5L I-4 engine delivers remarkable fuel economy. It also supplies a spirited 171 hp and 171 lb.-ft. of torque.

**Easy Fuel™ reduces pump time.** Our industry-first Easy Fuel capless fuel filler not only reduces evaporative emissions, it also helps get you back on the road in a snap. The system automatically seals shut when you remove the fuel nozzle – there's no cap. You just gas up and go. It's standard on every Escape and Escape Hybrid.

<sup>1</sup>2009 EPA-estimated fuel economy: 22 mpg city/28 hwy. for Escape FWD with 2.5L I-4 and 5-speed manual; 20 mpg city/28 hwy. for Escape FWD with 2.5L I-4 and 6-speed automatic.



You talk.

## SYNC listens.™

Ford SYNC® with 911 Assist™<sup>1</sup> plus new Traffic, Directions and Information. The award-winning, available Ford SYNC system – developed in association with Microsoft® – works with your paired **Bluetooth®-enabled mobile phone** and **digital media player** or **USB drive**. Make and take calls, play music by artist or genre, and more – all with the touch of a button and **simple voice commands**.<sup>2</sup>

SYNC also features these convenient **Driver Services**:

911 Assist • Turn-by-turn directions<sup>3</sup> • Vehicle Health Reports • Business searches<sup>3</sup> • Up-to-the-minute weather<sup>3</sup> • Personalized business, sports, traffic alerts, entertainment news, and more<sup>3</sup>

With **911 Assist**, the system can make an emergency call from your phone if any airbag has deployed. And, unlike other systems that send you to a call center first, SYNC connects you directly to a 911 operator. SyncMyRide.com has all the latest news.



Escape Hybrid Limited in Charcoal Black with available equipment

## A truly illuminating experience.

**Navigation with SIRIUS Travel Link.™** The available Navigation System, displayed on a vibrant **6.5" LCD touch screen**, features easy **voice activation** for everything from driving directions to accessing tunes. It also provides nearly **10 gigs of storage space** for photos and music while class-exclusive SIRIUS Travel Link delivers **up-to-the-minute** local traffic, weather, fuel prices, sports scores and movie listings.<sup>4</sup> On Escape Hybrid, this available system also features a Power & Efficiency screen (shown above) that coaches you on how to maximize your fuel efficiency by making the most of the vehicle's electric mode.

**SIRIUS® Satellite Radio.** Available SIRIUS Satellite Radio comes with a 6-month subscription: Surf more than **130 channels** including **100% commercial-free** music, plus the best sports, news, talk and entertainment, coast-to-coast.

<sup>1</sup>The vehicle's electrical system (including the battery), the wireless service provider's signal, and a connected mobile phone must all be available and operating for 911 Assist to function properly. These systems may become damaged in a crash. The paired mobile phone must be turned on, connected to SYNC, and the 911 Assist feature enabled in order for 911 to be dialed. <sup>2</sup>Driving while distracted can result in loss of vehicle control. Only use mobile phones and other devices, even with voice commands, when it is safe to do so. <sup>3</sup>Driver Services not available with SIRIUS Travel Link or Navigation System. See your dealer for details. <sup>4</sup>Real-time traffic monitoring available in select markets. Some features are unavailable while driving. Subscription required after trial 6 months expire. Service available in the 48 contiguous states and Washington, D.C.





Escape Hybrid Limited in Stone with available equipment and Ford Licensed Accessory – Dual INVISION™ DVD Headrests

Designed to support,  
**comfort** and sustain.

Escape is just the **right size** – inside and out. Its comfort-designed seats easily accommodate as many as **5 adults**. Supple leather-trimmed seating and **heated front seats** are standard on Escape Limited and Hybrid Limited this year.



The use of environmentally friendly, **soy-based foam** in seat cushions helps conserve limited resources and reduce CO<sub>2</sub> emissions. Escape Hybrid and XLT also feature **sustainable cloth-trimmed seating** made with 100% post-industrial materials – recycled plastics and polyester fibers that would otherwise have ended up in landfills.







Escape Limited in Charcoal Black with available equipment

## Hot technology brightens your ride.

From its sleek look to its intuitive arrangement, the instrument panel in every Escape is designed to please. The available **Ambient Lighting** can be set to match your mood with 7 glowing options from red hot to cool blue. The available **Rear View Camera** displays a full-color image from a liftgate-mounted camera in your rearview mirror or on the Navigation System's screen (when equipped).

Fans of the power moonroof will find it in these fun packages: **Sun & SYNC Package** (available on XLT) mixes the moonroof with our Ford SYNC® voice-activated, customizable media system. **Moon & Tune Package** (available on Limited) pairs it up with a 320-watt premium, 7-speaker sound system including a single-CD player.

# Plenty of space

for your latest challenge.

A. With the rear seats folded flat, Escape delivers up to **67.2 cu. ft.** of wide-open space. And even with the seats up, you still get up to 31.4 cu. ft. of space to fill with everything you need.

B. Tip-fold-flat latches make it easy to configure the standard **60/40 split-folding rear seats** to fit your immediate gear-hauling needs.

C. Escape Hybrid is uniquely prepared for your adventures with its **110-volt power outlet**.<sup>1</sup> Use it for your laptop, a radio, or even a small TV.

D. Inside the standard **floor console**: a 3-tier storage system, 2 removable bins, and a hidden storage area deep enough for a laptop or purse.

E. This **hidden, lockable wet trunk** is made for dirty work. It's found in the available Cargo Package, along with a retractable cargo area cover and 100-lb.-capacity roof-rail crossbars.



<sup>1</sup>See your Owner's Guide for complete details.



ESCAPE+HYBRID  2010



Escape XLT in Sterling Grey Metallic with available equipment

## Simply tops in safety.

Escape and Escape Hybrid both received **5-Star ratings**<sup>1</sup> in the National Highway Traffic Safety Administration's (NHTSA) frontal and side-impact crash tests. And the Insurance Institute for Highway Safety (IIHS) has named each a 2009 "**Top Safety Pick**" for achieving the highest rating possible in front, side and rear crash tests, and for having our standard AdvanceTrac<sup>®</sup> with class-exclusive RSC<sup>®</sup> (Roll Stability Control<sup>™</sup>). **AdvanceTrac with RSC**

is the only electronic stability control system that utilizes 2 gyroscopic sensors to help keep all 4 wheels firmly planted.<sup>2</sup> You also get **6 standard airbags**, including front airbags, front-seat side airbags and side-curtain airbags on every 2010 Escape and Escape Hybrid.

<sup>1</sup>2009 model year. Star ratings are part of the U.S. Department of Transportation's Safercar.gov program ([www.safercar.gov](http://www.safercar.gov)).

<sup>2</sup>Remember that even advanced technology cannot overcome the laws of physics. It's always possible to lose control of a vehicle due to inappropriate driver input for the conditions. For more information on AdvanceTrac with RSC, visit [fordvehicles.com](http://fordvehicles.com).



Escape XLT in Ingot Silver Metallic with Sport Appearance Package and other available equipment

## Escape XLT shines with **sport** style.

With the **Sport Appearance Package**, Escape is dressed to impress all around. This ultimate statement of streetwise style is available exclusively on XLT in Ingot Silver Metallic, Sangria Red Metallic or Black. Outside, you get a **high-gloss Black** grille, lower front appliqué, sideview mirrors and liftgate spoiler, plus a blacked-out treatment on the headlamps. Body-color door handles and rocker moldings are accented by unique

**17" premium Black wheels** with a machined-finish outer ring. Inside, a Charcoal Black environment is paired with **Charcoal Black cloth** seating for a dramatic look. The instrument cluster, center console and doors each receive touches of high-gloss Black, while the door handles, air vents and shifter knob feature a chrome finish. The overall effect is eye-catching in all the right ways.





# Specs

## DIMENSIONS & CAPACITIES

Exterior (FWD/4WD)	Escape	Hybrid
Wheelbase	103.1"	103.1"
Length	174.7"	174.7"
Height (without options)	67.9"/67.8"	67.7"
Width – Excluding mirrors	71.1"	71.1"
Width – Including mirrors	81.3"	81.3"
Width – Mirrors folded	77.9"	77.9"
Minimum running ground clearance	8.4"	8.3"
Liftover height	29.6"/29.5"	29.4"/29.6"
Overhang – Front	33.7"	33.7"
Overhang – Rear	37.8"	37.8"
Ramp breakover angle	19.0°/18.9°	18.7°
Angle of approach	19.4°/19.3°	19.5°/19.6°
Angle of departure	28.3°	27.8°/27.7°

### Interior

#### Front

Head room	40.4"	40.4"
Shoulder room	56.6"	56.6"
Hip room	53.3"	53.3"
Leg room	41.6"	41.6"

#### Rear

Head room	39.2"	39.2"
Shoulder room	55.9"	55.9"
Hip room	49.1"	49.1"
Leg room	35.6"	35.6"

#### Cargo Volume

Behind front seats	67.2 cu. ft.	66.4 cu. ft.
Behind rear seats	31.4 cu. ft.	30.9 cu. ft.

Dimensions may vary by trim level.  
Cargo and load capacity limited by weight and weight distribution.

## STANDARD

### Mechanical

4-wheel independent suspension
16.5-gallon fuel tank capacity (15.1-gallon on Escape Hybrid)
90,000-mile tune-up interval <sup>1</sup>
Electric Power-Assisted Steering (EPAS)
Front and rear stabilizer bars
Front-wheel drive (FWD)
Power front disc/rear drum brakes with Anti-lock Brake System (ABS)

### Safety & Security

3-point safety belt restraint system for all seating positions
Adjustable head restraints at all 5 seating positions
AdvanceTrac <sup>®</sup> with RSC <sup>®</sup> (Roll Stability Control <sup>™</sup> )
Belt-Minder <sup>®</sup> front safety belt reminder
Brake/shift interlock (with automatic transmission)
Front height-adjustable shoulder safety belts
Front-seat side airbags <sup>2</sup>
Integrated keyhead transmitter remotes (2)
LATCH – Lower anchors and tether anchors for child-safety seats (rear seat positions)
Personal Safety System <sup>™</sup> with dual-stage front airbags <sup>2</sup>
Safety Canopy <sup>®</sup> System with side-curtain airbags <sup>2</sup> and rollover sensor
SecuriLock <sup>®</sup> passive anti-theft ignition system
Side-intrusion door beams
SOS Post-Crash Alert System <sup>™</sup> flashes hazard lights and sounds horn after airbag deployment or safety belt pretensioner activation in certain collisions
Tire Pressure Monitoring System (excludes spare)

### Interior

60/40 split-folding rear bench seat with tip-fold-flat latches
2 power points (1 in each row)
Air conditioning
Auxiliary audio input jack
Covered visor vanity mirrors
Cruise control
Floor console with removable interior bins and 4 cupholders
Illuminated-entry system
Power door locks with child-safety rear door locks
Power windows with one-touch-down driver-window feature
Rear floor air ducts
Tachometer
Tilt steering wheel

### Exterior

Easy Fuel <sup>™</sup> capless fuel filler
Liftgate with flip-up glass
Power sideview mirrors with integrated Blind Spot Mirrors and manual fold-away design
Rear-window defroster
Solar-tinted glass
Windshield wipers – Front: variable-intermittent with washer; rear: 2-speed with washer

<sup>1</sup>Under normal driving conditions with routine fluid and filter changes.

<sup>2</sup>Always wear your safety belt and secure children in the rear seat.



## ESCAPE XLS

Equipped with all standard features, plus:

### Rapid Spec 100A:

Duratec® 25–2.5L I-4 engine

5-speed manual transmission

16" cast-aluminum wheels with P235/70R16 all-season BSW tires

AM/FM stereo/single-CD player with 4 speakers

Black exterior door handles and sideview mirrors

Chrome upper grille, body-color lower grille

Cloth front bucket seats with adjustable head restraints

### Available Option Groups

**Rapid Spec 101A:** 6-speed automatic transmission

**Rapid Spec 102A: Cargo Package:** roof side rails with crossbars, retractable cargo area cover and lockable wet trunk + 6-speed automatic transmission

### Available Options

Ford SYNC® voice-activated, in-vehicle communications and entertainment system<sup>1</sup>

Front and rear color-keyed carpeted floor mats

Intelligent 4WD System<sup>1</sup>

## HORSEPOWER, TORQUE & EPA-ESTIMATED FUEL ECONOMY<sup>2</sup>

### GAS-POWERED ESCAPE

#### Duratec 25–2.5L I-4 Engine

Horsepower 171 @ 6000 rpm

Torque (lb.-ft.) 171 @ 4500 rpm

5-speed manual (XLS) 22 mpg city/28 hwy.

6-speed automatic

FWD (XLS, XLT, Limited) 20 mpg city/28 hwy.

4WD (XLS, XLT, Limited) 19 mpg city/25 hwy.

#### Duratec 30–3.0L V6 FFV Engine

Horsepower 240 @ 6550 rpm

Torque (lb.-ft.) 223 @ 4300 rpm

6-speed automatic

FWD (XLT, Limited) 18 mpg city/26 hwy.

4WD (XLT, Limited) 17 mpg city/24 hwy.



## ESCAPE XLT

Equipped with all standard XLS features, plus:

### Rapid Spec 200A:

6-speed automatic transmission

Auto-dimming rearview mirror

Automatic headlamps

Black roof side rails

Compass and outside temperature display

Front and rear color-keyed carpeted floor mats

Front fog lamps

Illuminated visor vanity mirrors

Leather-wrapped steering wheel with secondary audio controls

MyKey™ owner controls feature

Overhead console with dual storage bins

Premium-grade cloth seats with 6-way power driver seat

Privacy glass

SecuriCode™ keyless-entry keypad

SIRIUS Satellite Radio with 6-month subscription

### Available Option Groups

**Rapid Spec 201A: Cargo Package:** roof side rails with crossbars, retractable cargo area cover and lockable wet trunk

**Rapid Spec 202A: Sun & SYNC Package:** power moonroof and Ford SYNC

**Rapid Spec 203A: Cargo Package + Sun & SYNC Package**

**Rapid Spec 204A: Cargo Package + Sun & SYNC Package**

**+ Leather Package:** leather-trimmed seats and Ambient Lighting

### Available Options & Packages

17" chrome-clad aluminum wheels with P225/65R17 all-season BSW tires (not available with Sport Package)<sup>3</sup>

**Cargo Package**

Duratec 30–3.0L V6 Flex Fuel engine

Ford SYNC

Integrated side step bars (not available with Sport Package)

Intelligent 4WD System

**Leather Package**

Premium Sound System with single-CD player, clock and 7 speakers (including an 8" subwoofer) with 320 watts<sup>3</sup>

**Sport Appearance Package:** high-gloss Black grille, lower front appliqué, sideview mirrors and liftgate spoiler; Blacked-out headlamp treatment; 17" premium Black wheels with machined-finish outer ring and P225/65R17 all-season BSW tires; body-color door handles and rocker moldings; Charcoal Black cloth seating; Ebony Black interior accents; chrome finish on interior door handles, air register bezels and shifter knob insert<sup>4</sup>

**Trailer Tow Prep Package:** Class II 3500-lb. receiver and trailer wiring harness with 4-pin connector (V6 only)



## ESCAPE LIMITED

Equipped with all standard XLT features, plus:

### Rapid Spec 300A:

16" bright machined-aluminum wheels

AM/FM stereo/single-CD player with 6 speakers

Ambient Lighting

Body-color door handles and heated sideview mirrors

Chrome finish on interior door handles, air register bezels and shifter insert

Chrome upper and lower grilles, liftgate garnish and roof-rail inserts

Ebony Black-trimmed center stack

Ford SYNC

Premium leather-trimmed heated front seats

**Cargo Package**

### Available Option Groups

**Rapid Spec 301A: Moon & Tune Package:** power moonroof and Premium Sound System with single-CD player, clock and 7 speakers (including an 8" subwoofer) with 320 watts

**Rapid Spec 302A: Limited Luxury Package:** Dual-zone Electronic Automatic Temperature Control, Reverse Sensing System, Rear View Camera and Universal Garage Door Opener + Moon & Tune Package

### Available Options and Packages

17" chrome-clad aluminum wheels with P225/65R17 all-season BSW tires

Active Park Assist<sup>5</sup>

Duratec 30–3.0L V6 Flex Fuel engine

Integrated side step bars

Intelligent 4WD System

**Trailer Tow Prep Package**

Voice-activated Navigation System with nearly 10-gigabyte hard drive, single-disc Premium Sound System and SIRIUS Travel Link™ services with 6-month subscription<sup>6</sup>

<sup>1</sup>Requires Rapid Spec 101A. <sup>2</sup>2009 model year ratings. Fuel economy when operating on E85 will yield different values than gasoline. See *Fuel Economy Guide* for more information. <sup>3</sup>Requires Rapid Spec 201A, 202A, 203A or 204A. <sup>4</sup>Available with Sangria Red Metallic, Ingot Silver Metallic or Black exterior colors. Includes roof rails only when ordered with Cargo Package or Sun & SYNC Package. Not available with 17" wheels or integrated side step bars. <sup>5</sup>Requires Rapid Spec 302A. <sup>6</sup>Requires Rapid Spec 301A or 302A.





### ESCAPE HYBRID

Equipped with all standard XLT features, plus:

#### Rapid Spec 500A:

Permanent-Magnet AC-synchronous electric motor
330-volt nickel-metal-hydrate (NiMH) battery pack
16" cast-aluminum wheels
110-volt AC power outlet
Body-color upper and lower grilles
Dual-zone Electronic Automatic Temperature Control
Ford SYNC <sup>®</sup>
Regenerative Braking System

#### Available Options

Black roof-rail crossbars
Integrated side step bars
Intelligent 4WD System
Power moonroof with sunshade and mini-overhead console
Voice-activated Navigation System with nearly 10-gigabyte hard drive, single-disc Premium Sound System, Hybrid Energy Flow and Power & Efficiency monitors, and SIRIUS Travel Link™ services with 6-month subscription



### ESCAPE HYBRID LIMITED

Equipped with all standard Hybrid features, plus:

#### Rapid Spec 501A:

16" bright machined-aluminum wheels
AM/FM stereo/single-CD player with 6 speakers
Ambient Lighting
Automatic headlamps
Body-color door handles and heated sideview mirrors
Chrome interior door handles, air register bezels and shifter insert
Chrome upper and lower grilles, liftgate garnish and roof-rail inserts
Ebony Black-trimmed center stack
Power moonroof
Premium leather-trimmed heated front seats
Reverse Sensing System
Black roof-rail crossbars
SecuriCode™ keyless-entry keypad

#### Available Options

Active Park Assist
Integrated side step bars
Intelligent 4WD System
Voice-activated Navigation System with nearly 10-gigabyte hard drive, single-disc Premium Sound System, Hybrid Energy Flow and Power & Efficiency monitors, and SIRIUS Travel Link services with 6-month subscription

### HORSEPOWER, TORQUE & EPA-ESTIMATED FUEL ECONOMY<sup>1</sup>

#### GAS-ELECTRIC-POWERED ESCAPE

Net horsepower	177
----------------	-----

#### 2.5L I-4 Atkinson-Cycle Engine

Horsepower	155 @ 6000 rpm
Torque (lb.-ft.)	136 @ 4500 rpm

#### Permanent-Magnet AC-Synchronous Electric Motor

Horsepower	94 @ 5000 rpm
Electronically controlled Continuously Variable Transmission (eCVT)	
FWD (Hybrid, Hybrid Limited)	34 mpg city/31 hwy.
4WD (Hybrid, Hybrid Limited)	29 mpg city/27 hwy.

**New Vehicle Limited Warranty.** We want your Ford Escape or Escape Hybrid ownership experience to be the best it can be. So under this warranty, your new vehicle comes with 3-year/36,000-mile Bumper-to-Bumper Coverage, 5-year/60,000-mile Powertrain Warranty Coverage, 5-year/50,000-mile Safety Restraint Coverage, and 5-year/unlimited-mile Corrosion (Perforation) Coverage – all with no deductible. Escape Hybrid is also covered by an 8-year/100,000-mile Hybrid Limited Warranty.<sup>2</sup> Please ask your Ford Dealer for copies of these limited warranties.

**Roadside Assistance.** Covers your vehicle for 5 years or 60,000 miles, so you have the security of knowing that help may be only a phone call away should you run out of fuel, lock yourself out of the vehicle, or need towing. Your Ford Dealer can provide complete details on all of these advantages.

**Ford Credit.** Get the ride you want. Whether you plan to lease or finance, you'll find the choices that are right for you at Ford Credit. Ask your Ford Dealer for details or check us out at [fordcredit.com](http://fordcredit.com).

**Ford Extended Service Plan.** For a purchase or lease, the Ford Extended Service Plan (ESP) gives you "Peace-of-Mind" protection designed to cover key vehicle components and protect you from the cost of unexpected repairs. Ask your dealer for a Ford ESP, the only service contract backed exclusively by Ford and honored at all Ford Lincoln Mercury dealerships.

**Insurance Services.** Get Ford Motor Company quality in your auto insurance. Our program offers industry-leading benefits and competitive rates. Call 1-877-367-3847, or visit us at [fordvip.com](http://fordvip.com) for a no-obligation quote. Insurance offered by American Road Services Company (in CA, American Road Insurance Agency), a licensed agency and subsidiary of Ford Motor Company.

Comparisons based on 2009 competitive models (Small SUV class), publicly available information and Ford certification data at time of release. Some features discussed may be optional. Vehicles shown may contain optional equipment. Features shown may be offered only in combination with other options or subject to additional ordering requirements or limitations. Dimensions shown may vary due to optional features and/or production variability. Following release of the PDF, certain changes in standard equipment, options and the like, or product delays may have occurred which would not be included in these pages. Your Ford Dealer is the best source for up-to-date information. Ford Division reserves the right to change product specifications at any time without incurring obligations.

<sup>1</sup>2009 model year ratings. See *Fuel Economy Guide* for more information.

<sup>2</sup>10-year/150,000-mile Hybrid Battery Limited Warranty in California, Connecticut, Maine, Massachusetts, New Jersey, New York, Rhode Island and Vermont. See dealer for details.

SIRIUS is a registered trademark of SIRIUS XM Radio Inc. Subscriptions governed by SIRIUS Terms and Conditions at [sirius.com/serviceterms](http://sirius.com/serviceterms).

Microsoft is a registered trademark of Microsoft Corporation.

The Bluetooth word mark is a trademark of the Bluetooth SIG, Inc.

# Exterior colors



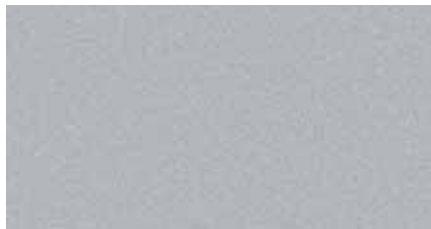
Sangria Red Metallic



Sport Blue Metallic



Sterling Grey Metallic



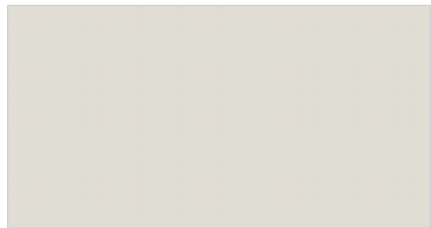
Ingot Silver Metallic



Steel Blue Metallic



Black Pearl Slate Metallic



White Suede



Kiwi Green Metallic



Black



Gold Leaf Metallic

	Interior Colors		
<b>XLS</b>			
Sangria Red Metallic		●	
Sport Blue Metallic		●	
Sterling Grey Metallic		●	
Ingot Silver Metallic		●	
Steel Blue Metallic		●	
White Suede		●	
Black		●	
Gold Leaf Metallic		●	
<b>XLT</b>			
Sangria Red Metallic <sup>1</sup>	●	●	●
Sport Blue Metallic	●	●	●
Sterling Grey Metallic	●	●	●
Ingot Silver Metallic <sup>1</sup>	●	●	●
Steel Blue Metallic	●	●	●
White Suede	●	●	
Black <sup>1</sup>	●	●	●
Gold Leaf Metallic	●	●	●
<b>Limited</b>			
Sangria Red Metallic	●		●
Sterling Grey Metallic	●		●
Ingot Silver Metallic	●		●
Steel Blue Metallic	●		●
White Suede	●		●
Black	●		●
Gold Leaf Metallic	●		●
<b>Hybrid/Hybrid Limited</b>			
Ingot Silver Metallic		●	
Steel Blue Metallic		●	
Black Pearl Slate Metallic		●	
White Suede		●	
Kiwi Green Metallic		●	
Black		●	

**INTERIORS:** ● Camel ● Stone ● Charcoal Black

<sup>1</sup>Available on Sport Appearance Package.

Colors shown are representative only. Not all colors are available on all models. See your dealer for actual paint/trim options.

## Interior colors



**Cloth - Greystone (Stone interior)**  
Standard on XLS



**Cloth - Premium Greystone (Stone interior)**  
Standard on XLT and Hybrid



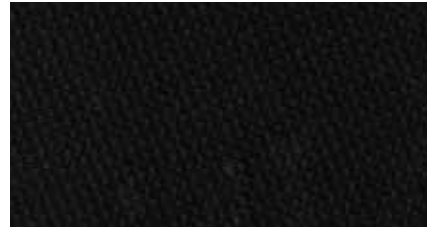
**Leather - Camel**  
Standard on Limited, Optional on XLT



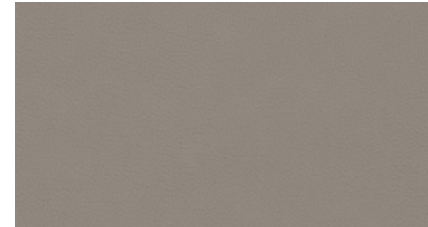
**Leather - Charcoal Black**  
Standard on Limited, Optional on XLT



**Cloth - Premium Camel**  
Standard on XLT



**Cloth - Premium Charcoal Black**  
Standard on XLT



**Leather - Stone**  
Standard on Hybrid Limited, Optional on XLT

## Wheels



**16" Cast-Aluminum**  
Standard on XLS and XLT



**16" Cast-Aluminum**  
Standard on Hybrid



**16" Bright Machined-Aluminum**  
Standard on Limited and Hybrid Limited



**17" Premium Black with Machined-Finish Outer Ring**  
Sport Appearance Package on XLT



**17" Chrome-Clad Aluminum**  
Optional on XLT and Limited



## Ford Custom Accessories

- Also available:
- SmartAlert™ GPS Tracking and Recovery<sup>1</sup>
  - Electrochromic Mirror
  - Keyless Entry Keypad
  - Remote Start Systems
  - Vehicle Security System
  - Interior Lighting Kit
  - Cargo-Logic® System
  - Interior Soft Cargo Organizer (Large Size)
  - Interior Soft Cargo Cooler Bag
  - Interior Rear Cargo Shade
  - Moonroof Deflector
  - Side Window Deflectors
  - Hood Deflector
  - Sportz® SUV Tent<sup>1</sup>
  - EchoMaster® HitchScan™ Rear Park Assist Sensor and Hitch Step<sup>1</sup>
  - Roof Crossbars
  - Running Boards
  - Wheel Locks
  - Trailer Hitch Balls/Draw Bars
  - Trailer Wiring Harness Kit
  - Wiper Shaker De-Icer and Debris Cleaner<sup>1</sup>
  - All-Weather Floor Mats
  - Ashcup/Coin Holder/Smoker's Pack

<sup>1</sup>Ford Licensed Accessories.  
Garmin is a registered trademark of Garmin Ltd.

To learn more about Ford Custom Accessories and to buy them online, visit [fordaccessories.com](http://fordaccessories.com).

Genuine Ford Accessories will be warranted for whichever provides you the greatest benefit: 12 months or 12,000 miles (whichever occurs first), or the remainder of your Bumper-to-Bumper 3-year/36,000-mile New Vehicle Limited Warranty. Contact your local Ford Dealer for details and a copy of the limited warranty. Ford Licensed Accessories (FLA) are warranted by the accessory manufacturer's warranty. Contact your Ford Dealer for details regarding the manufacturer's limited warranty and/or a copy of the FLA product limited warranty offered by the accessory manufacturer.



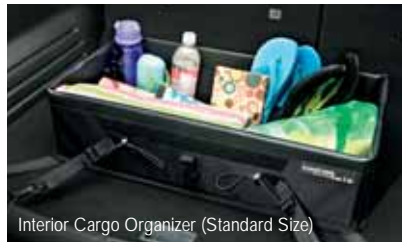
THULE® Racks, Carriers and Cargo Holders<sup>1</sup>



Rear Roof Spoiler



Garmin® Portable Navigation Systems<sup>1</sup>



Interior Cargo Organizer (Standard Size)



Interior Cargo Net



Katzkin® Leather Seat Covers<sup>1</sup>



Plus many other color combinations



Dual INVISION™ DVD Headrests<sup>1</sup>

## THE FACTS ABOUT FORD.



### Drive quality.

**FACT:** On top of earning 8 *Consumers Digest* “Best Buy” awards for 2009 models, Ford Motor Company is **unsurpassed** by Toyota and Honda when it comes to quality.<sup>1</sup>



### Drive green.

**FACT:** Ford builds the **most fuel-efficient midsize sedan** in America (Fusion Hybrid: 41 mpg city)<sup>2</sup> and the **most fuel-efficient SUV** on the planet (Escape Hybrid: 34 mpg city)<sup>3</sup>



### Drive safe.

**FACT:** No other car company offers you more vehicles that have received both 2009 IIHS “**Top Safety Pick**” and NHTSA **5-Star** crash test ratings.<sup>4</sup>



### Drive smart.

**FACT:** The voice-activated **Ford SYNC**<sup>®</sup> customizable media system and **EcoBoost™ V6 engines** are just a few of the innovative technologies you can only find in a Ford.

Visit [fordvehicles.com](http://fordvehicles.com) to learn more.



Drive one.

<sup>1</sup>Based on RDA Group's GQRS cumulative survey at 3 months of service in 3 surveys of 2008 MY Ford and competitive owners conducted 9/07-5/08. <sup>2</sup>EPA-estimated 23 mpg city/34 hwy., 27 mpg combined, Fusion S I-4 automatic; 41 mpg city/36 hwy., Fusion Hybrid. Actual mileage will vary. Midsize class per R. L. Polk. <sup>3</sup>Based on unadjusted city fuel economy from EPA (10/08) and VCA (5/08). 2009 EPA-estimated 34 mpg city/31 hwy. for Escape Hybrid FWD. Excluding vehicles built for Mazda. <sup>4</sup>Based on NHTSA 5-Star ratings for all 4 crash test categories. Star ratings are part of the U.S. Department of Transportation's Safercar.gov program ([www.safercar.gov](http://www.safercar.gov)).