



CAUSE A STIR in the 2008 Ford Edge.

Fair warning, the bold design and flexibility of Edge – especially the stylish new Limited – tend to attract lots of admirers. Also, Edge's award-winning¹ 3.5L V6 engine delivers a best-in-class² 265 hp at 6250 rpm. Intense exhilaration is likely to arise from this energetic performance blended with Edge's sports sedan-like handling. And new this year, our exclusive Ford SYNC™ option connects you to Edge like never before. Are you ready?



Edge Limited with Camel leather-trimmed seating and available equipment



Edge SEL with optional Vista Roof™

The 2007 Ford Edge is the "Most Appealing Midsize Multi-Activity Vehicle" in the J.D. Power and Associates 2007 Automotive Performance, Execution and Layout (APEAL) Study.SM

**APEAL
AWARD
RECIPIENT**

¹Ward's 10 Best Engines of 2007. ²Medium 5-Passenger CUV class with standard 6-cylinder engine.

STANDARD FEATURES

MECHANICAL

3.5L Duratec 35 V6 engine
 6-speed automatic transmission
 4-wheel power disc brakes with Anti-lock Brake System (ABS)
 17" painted-aluminum wheels (P235/65R17 BSW tires) A
 Class I towing
 Front-wheel drive
 Fuel tank capacity — 19-gallon FWD, 20-gallon AWD
 Independent front and rear suspension
 Mini spare tire
 Power steering

SAFETY/SECURITY

Personal Safety System® for driver and front passenger — Includes dual-stage front airbags¹ safety belt pretensioners, safety belt energy-management retractors, safety belt usage sensors, driver-seat position sensor, crash severity sensor, restraint control module and Front-Passenger Sensing System
 Adjustable head restraints
 AdvanceTrac® with RSC® (Roll Stability Control™)
 Autolock
 Battery saver with headlamps-off delay
 Belt-Minder® safety belt reminder — Front
 Child-safety rear door locks
 Front-seat side airbags¹
 Height-adjustable shoulder safety belts — Front
 Illuminated entry system
 LATCH — Lower anchors and tether anchors for child-safety seats (2 in rear)
 Safety Canopy® System with side-curtain airbags¹ and rollover sensor
 SecurILock® passive anti-theft ignition system
 Tire Pressure Monitoring System (excludes spare)

INTERIOR

12v power points (4) — Instrument panel, front console, rear seat and cargo area
 Accessory delay for power features
 Air conditioning — Manual with rear-seat vents
 AM/FM stereo/single-CD player with MP3 capability, clock and 4 speakers
 Assist handles — B-pillar (2)
 Auxiliary audio input jack
 Cargo area light
 Center console with deep-bin armrest, dividers, power point, and 2 cupholders
 Coat hooks — 2
 Cruise control — Steering wheel-mounted
 Cupholders/beverage holders — 6
 Dome/map lights — Front and rear rows
 Dual-tone electric horn
 Floor mats — Front and rear carpeted
 Instrumentation (tachometer, lamp outage, low fuel warning, low washer fluid, low oil pressure, door ajar, liftgate ajar and coolant temperature indicator)
 Map pockets — Driver and front-passenger seatbacks and in all 4 door panels with 2 beverage holders in front door panels
 Overhead console with sunglasses holder

INTERIOR (continued)

Power door locks
 Power windows with one-touch-up/-down driver-window feature
 Rear-seat fold-down armrest with 2 cupholders
 Rear-window defroster
 Seats — Front bucket seats with driver manual lumbar; rear 60/40 split fold-flat seat with manually reclining seatbacks
 Steering column — Manual tilt and telescoping
 Sun visors — Adjustable driver and front-passenger

EXTERIOR

Antenna — Roof-mounted
 Door handles — Black
 Exhaust tips — Dual steel
 Grille — Chrome 3-bar design
 Headlamps — Quad-beam halogen
 Power sideview mirrors with manual fold-away design
 Privacy glass (rear doors, rear quarter windows and liftgate window)
 Rear spoiler — Black
 Remote keyless-entry system with 2 integrated key fobs
 Rocker moldings — Black
 Windshield wipers — Front: variable-intermittent with washer; Rear: 2-speed with washer

¹Always wear your safety belt and secure children in the rear seat.

ENGINE

	3.5L Duratec 35 V6
Horsepower (hp @ rpm)	265 @ 6250
Torque (lb.-ft. @ rpm)	250 @ 4500

TRAILER TOWING APPLICATIONS

MAXIMUM LOADED TRAILER WEIGHT (lbs.)

Class I	2000
Class II	3500

Maximum weights shown are for properly equipped vehicles with required equipment and a 150-lb. driver. Weight of additional options, equipment, passengers and cargo must be deducted from this weight. For additional information, see your Ford Dealer.

Remember that even advanced technology cannot overcome the laws of physics. It's always possible to lose control of a vehicle due to inappropriate driver input for the conditions. For more information on AdvanceTrac with RSC, visit fordvehicles.com. Comparisons based on 2007 competitive models (Medium 5-Passenger CUV class with standard 6-cylinder engine), publicly available information and Ford certification data at time of release. Some features discussed may be optional. Vehicles shown may contain optional equipment. Features shown may be offered only in combination with other options or subject to additional ordering requirements or limitations. Dimensions shown may vary due to optional features and/or production variability. Following publication of the catalog, certain changes in standard equipment, options and the like, or product delays may have occurred which would not be included in these pages. Your Ford Dealer is the best source for up-to-date information. Ford Division reserves the right to change product specifications at any time without incurring obligations.

Ford Edge received the highest numerical score among midsize multi-activity vehicles in the proprietary J.D. Power and Associates 2007 Automotive Performance, Execution and Layout StudySM Study based on responses from 91,335 new-vehicle owners, measuring 328 models, and measures opinions after 90 days of ownership. Proprietary study results are based on experiences and perceptions of owners surveyed in February–May 2007. Your experiences may vary. Visit jdpower.com.

FEATURES & OPTIONS

SE		
SEL		
LIMITED		
MECHANICAL		
○	○	○ All-Wheel-Drive system
○	—	— 18" painted-aluminum wheels B
—	○	— 18" premium painted-aluminum wheels D
—	○	● 18" premium aluminum chrome-clad wheels C
—	—	○ 20" premium aluminum chrome-clad wheels E
○	○	● P245/60R18 all-season BSW tires
—	—	○ P245/50R20 all-season BSW tires
SAFETY/SECURITY		
○	○	● Reverse Sensing System
SEATING		
●	—	— Cloth trim — Front bucket seats with manual driver lumbar and driver/passenger recline
—	●	— Unique cloth trim — Front bucket seats with 6-way power driver seat, manual driver lumbar and driver/passenger recline
—	●	● Leather trim — Front bucket seats with 6-way power driver and front-passenger seats and manual driver lumbar
—	●	● EasyFold™ rear seatback release
—	●	● Fold-flat front-passenger seat
INTERIOR		
●	●	— Air conditioning — Manual
—	●	● Air conditioning — Dual-zone Electronic Automatic Temperature Control with particulate air filter
●	—	— AM/FM stereo/single-CD player with MP3 capability and 4 speakers
○	●	— Premium AM/FM stereo/6-disc in-dash CD changer with MP3 capability, 4 speakers and secondary steering wheel-mounted audio controls
—	○	● Audiophile® Sound System with 9 speakers
○	○	○ Floor mats — All-weather (in addition to standard carpeted floor mats)
○	○	● Ford SYNC™1 — Voice-activated in-vehicle communications and entertainment system (available Fall 2007)
—	●	● Message center with trip computer and compass display
—	○	○ Navigation System — Voice-activated, DVD-based with Audiophile Sound System
○	○	○ Rear Cargo Management System
—	○	○ Rear-Seat DVD Entertainment System with 8" screen, 2 sets of wireless headphones (not available with Vista Roof™)

SE		
SEL		
LIMITED		
INTERIOR (continued)		
○	○	○ SIRIUS Satellite Radio ² (with 6-month subscription)
—	●	● Steering wheel — Leather-wrapped with cruise and secondary audio controls
—	●	● Sun visors with illuminated vanity mirrors
EXTERIOR		
●	—	— Door handles and rear spoiler — Black
—	●	● Door handles and rear spoiler — Body-color
●	—	— Exhaust tips — Dual steel
—	●	● Exhaust tips — Dual chrome
—	●	● Fog lamps with chrome bezels
●	—	— Mirrors — Black, power, sideview with manual fold-away design
—	●	● Mirrors — Body-color, power, sideview with manual fold-away design
—	○	○ Power liftgate
○	○	○ Roof side rails — Black (not available with Vista Roof)
—	○	○ Vista Roof — Panoramic 2-panel glass roof with power tilt and open features on front panel and dual power sunshades for both panels
PACKAGES		
○	○	○ Class II Trailer Tow Package — Includes Class II hitch receiver, engine oil cooler, larger radiator, upgraded cooling fans, upgraded battery (68-amp) and wiring harness with 4-pin connector (3500 lbs. max.)
○	●	● Convenience Group — Includes automatic headlamps with wiper activation, auto-dimming rearview mirror, driver-side illuminated keyless-entry keypad and secondary steering wheel-mounted audio controls
—	—	○ Interior Appearance Package — Includes premium Charcoal Black and Red leather-trimmed seats and Red contrast stitching on steering wheel and shift knob (available with Black, Redfire and Vapor Silver)
—	○	● Premium Package ³ — Includes Dual-zone Electronic Automatic Temperature Control with particulate air filter, Universal Garage Door Opener, security approach lamps, heated front seats and sideview mirrors, leather-trimmed seating, memory front seats and sideview mirrors, and driver seat easy-entry feature
—	○	● Seating Flexibility Package ³ — Includes leather-trimmed seating with 6-way power front-passenger seat; fold-flat front-passenger seat; and EasyFold rear seatback release

● Standard ● Available as Part of a Package ○ Optional — Not Available

¹Driving while distracted can result in a loss of vehicle control. Only use mobile phones (even with voice commands) and other devices not essential to driving when it is safe to do so.
²Service not available in Alaska or Hawaii. See your Ford Dealer or contact SIRIUS at 1-888-539-7474 for more information.
 ©2007 SIRIUS Satellite Radio Inc. "SIRIUS," the SIRIUS dog logo and "The Best Radio on Radio" are registered trademarks of SIRIUS Satellite Radio Inc.
³Premium Package and Seating Flexibility Package are not available together on SEL. For both packages, order a Limited. Audiophile is a registered trademark of Audiophile, Inc.

WHEELS

- A** 17" Painted-Aluminum Standard on SE and SEL
- B** 18" Painted-Aluminum Optional on SE
- C** 18" Premium Aluminum Chrome-Clad Standard on Limited; Optional on SEL
- D** 18" Premium Painted-Aluminum Optional on SEL
- E** 20" Premium Aluminum Chrome-Clad Optional on Limited



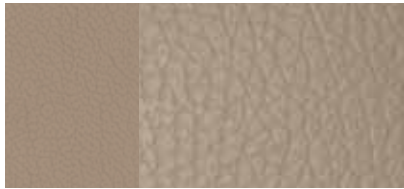
INTERIORS



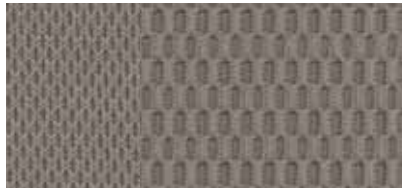
Camel Cloth
Standard on SE



Unique Camel Cloth
Standard on SEL



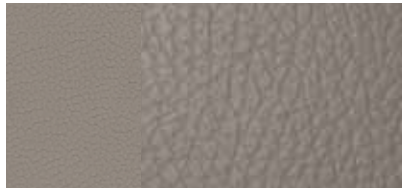
Camel Leather
Standard on Limited; Optional on SEL



Medium Light Stone Cloth
Standard on SE



Unique Medium Light Stone Cloth
Standard on SEL



Medium Light Stone Leather
Standard on Limited; Optional on SEL



Charcoal Black Cloth
Standard on SE



Unique Charcoal Black Cloth
Standard on SEL



Charcoal Black Leather
Standard on Limited; Optional on SEL



Charcoal Black with Red Leather Inserts
Standard on Limited with
Interior Appearance Package

CAMEL		
MEDIUM LIGHT STONE		
CHARCOAL BLACK		
SE		
●	●	●
●		●
●		●
●	●	●
●		●
●	●	●
●	●	●
SEL/LIMITED		
●	●	●
●		●
●		●
●	●	●
●		●
●	●	●
●	●	●
●	●	●

¹Available with Interior Appearance Package. ²New for 2008.

EXTERIORS



Black



Blazing Copper Metallic



Crème Brûlée



Dark Ink Blue Metallic



Light Ice Blue Metallic



Redfire Metallic



Vapor Silver Metallic



White Sand Tri-Coat Metallic

Ford uses clearcoat paint for beauty and protection. Colors shown are representative only. Not all colors are available on all models. See your dealer for actual paint/trim options. Vehicles shown may contain optional equipment.



New Vehicle Limited Warranty

We want your Ford Edge ownership experience to be the best it can be. So under this warranty, your new vehicle comes with 3-year/36,000-mile Bumper-to-Bumper Coverage, 5-year/60,000-mile Powertrain Warranty Coverage, 5-year/50,000-mile Safety Restraint Coverage, and 5-year/unlimited-mile Corrosion (Perforation) Coverage — all with no deductible. Please ask your Ford Dealer for a copy of this limited warranty.

For more assurance: The 5-year/60,000-mile powertrain limited warranty is fully transferable, has no deductible, and provides you with an additional 2 years or 24,000 miles of coverage — on select components, including the engine and transmission — beyond the standard 3-year/36,000-mile Bumper-to-Bumper Coverage. Roadside Assistance is extended to 5 years or 60,000 miles, so you have the security of knowing that help may be only a phone call away should you run out of fuel, lock yourself out of the vehicle, or need towing. Your Ford Dealer can provide complete details on all of these advantages.



Get the ride you want. Whether you plan to lease or finance, you'll find the choices that are right for you at Ford Credit. Ask your Ford Dealer for details or check us out at fordcredit.com.



Get Ford Motor Company quality in your auto insurance. Our program offers industry-leading benefits and competitive rates. Call 1-877-367-3847, or visit us at fordvip.com for a no-obligation quote. Insurance offered by American Road Services Company (in CA, American Road Insurance Agency), a licensed agency and subsidiary of Ford Motor Company.



For a purchase or lease, the Ford **Extended Service Plan (ESP)** gives you "Peace-of-Mind" protection designed to cover key vehicle components and protect you from the cost of unexpected repairs. Ask your dealer for an ESP, the only service contract backed exclusively by Ford and honored at all Ford Lincoln Mercury dealerships.



Genuine Ford Accessories are designed and engineered specifically for Ford vehicles. Visit our website at fordaccessoriesstore.com to use the Accessorizer, and to learn about complete accessory details and purchase instructions.