



THE 2011 ESCALADE



THE ESCALADE



Side Blind Zone Alert², an available feature, built into exterior rearview mirrors, gives the driver an extra set of eyes to the side.

Power-retractable assist steps, an available feature, ease vehicle-entry access while maintaining a streamlined profile when not in use.



IntelliBeam, an available feature, turns the high-beams on automatically, and switches to low-beams when oncoming headlamps or taillamps are detected.

22" wheels³, an available option, are authoritative, handsome, and match the scale of the Escalade.

Power liftgate can be opened or closed with the liftgate button or remotely using either the vehicle key fob or a switch in the overhead console.



A 403-horsepower 6.2L Vortec V8 engine is an all-aluminum design with Variable Valve Timing and Active Fuel Management for improved fuel efficiency.⁴

The 2011 Cadillac Escalade is about presence and power wrapped in elegance. With its distinctive interior and impressive performance, this is the most acclaimed luxury SUV ever. The spacious cabin seats up to eight. Its suspension design incorporates available Magnetic Ride Control¹. And its levels of onboard equipment and technology are stunning. For people with passengers or cargo to carry, and when comfort and spaciousness are required, Escalade is the one.



¹ Requires available 22" wheels.

² Before making a lane change, always check the SBZA display, check the side and inside rear mirrors, look over your shoulder for vehicles and hazards, and start the turn signal.

³ Use only GM-approved wheel/tire combinations. See dealer for details.

⁴ Escalade RWD: EPA estimated mpg 14 city/18 highway. Escalade AWD: EPA estimated mpg 13 city/18 highway.

Front seats are 14-way power-adjustable, heated and cooled. Driver's seat includes memory settings that can accommodate two drivers.

Steering wheel is leather-trimmed, wood-accented and power tilt-adjustable, with integrated controls for audio and cruise. A heated option is also available.



Adaptive Remote Start allows the Escalade's engine to be started and the interior to be heated or cooled before the driver steps inside.

Rearview backup camera and Rear Park Assist: The rearview camera helps you see behind you when you're backing up. Ultrasonic Rear Park Assist provides audible alerts when certain objects are detected behind the vehicle.



THE ESCALADE INTERIOR

Bose® 5.1 surround sound system with 10 speakers and AudioPilot® noise compensation technology.

Tri-zone automatic climate control allows individual temperature conditions to be set for driver, front passenger and rear-seat passengers.



With the same attention to detail inside and out, the Escalade cabin offers modern technology and luxurious accommodations for up to eight adults. Fourteen-way power-adjustable front seats, including 4-way lumbar support, help you customize your drive, while memory settings for two drivers keep it all in mind. Elegant materials, brushed aluminum and burled accents, supple leather trim and French-stitched seams, advanced technology and thoughtful amenities harmonize for an unsurpassed level of comfort. Navigation¹ is touch screen and incorporates a 10-speaker Bose® 5.1 surround sound system.



¹ Map coverage available in the United States, U.S. Virgin Islands, Puerto Rico and Canada.

Unique front fascia with dramatic upper and lower grilles give the exterior a distinctive presence.

22" multi-spoke chrome wheels¹ designed especially for Platinum.

THE ESCALADE PLATINUM

TEHĀMA full-leather first- and second-row seats are exceptionally soft.

LED headlamps look like jewelry, are energy-efficient and last longer than conventional halogens.

Platinum's premium DVD entertainment system adds two independent headrest viewing screens to supplement the screen(s) in the overhead console.

PLATINUM

Platinum, the premier Escalade, takes utility vehicle style and capability to an unprecedented level. On the outside, a dramatic front fascia, unique LED headlamps and exclusive 22" chrome wheels.¹ And inside, soft TEHĀMA full-leather first- and second-row seats, with contrast-color French stitching and embroidered Wreath & Crest. Leather-wrapped instrument panel and trim. Heated and cooled seats and cupholders. Olive Ash and Burled Walnut wood trim with decorative inlays. Warm aluminum accents. DVD entertainment with up to five LCD screens.



¹ Use only GM-approved wheel/tire combinations. See dealer for details.



Hybrid Platinum offers everything Platinum, plus heightened efficiency. Available in RWD or 4WD options.

A fuel efficiency indicator is visibly positioned in the gauge cluster and is used to help the driver maximize fuel economy.

THE ESCALADE HYBRID

The world's only full-size luxury hybrid SUV, the Escalade Hybrid is an amalgam of comfort, performance and intelligent efficiency. Seamlessly combining an advanced hybrid system and Active Fuel Management, this vehicle utilizes energy created by its gas engine and electricity generated by electric motors. Mileage is improved, CO₂ emissions reduced, with an EPA estimated 20 mpg in the city and 23 mpg on highways, while seating eight in style and comfort. Escalade Hybrid. The purest expression of uncompromising luxury.

Combining an advanced hybrid system and Active Fuel Management, the Escalade Hybrid runs on two types of power – energy created by its gas engine, and electricity from electric motors.

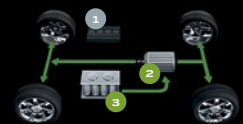
- 1 Engine
- 2 Hybrid Transmission
- 3 Battery Pack

1 Auto Stop (engine off)



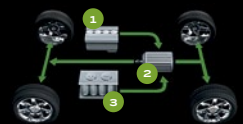
While stopped, the engine may shut off to conserve fuel, then seamlessly restart when you accelerate.

2 Electric/battery power



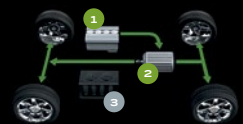
While driving at low speeds or in stop-and-go traffic, the vehicle may operate fully in electric mode.

3 Hybrid power



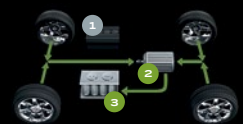
As vehicle demands increase, electric motors and engine combine to provide power and acceleration.

4 Engine power



If vehicle demands require, the Hybrid will rely entirely on the might of the 332hp 6.0L gas engine.

5 Regenerative braking/battery recharging



Regenerative braking captures some of the energy lost during vehicle braking and coasting, and returns it to the battery.



POWER AND TECHNOLOGY

Variable Valve Timing controls the opening and closing of engine valves on the fly, providing instant response and improving power and fuel efficiency.³



Active Fuel Management senses when full 8-cylinder power is unnecessary, and automatically adjusts to run on four, saving fuel.

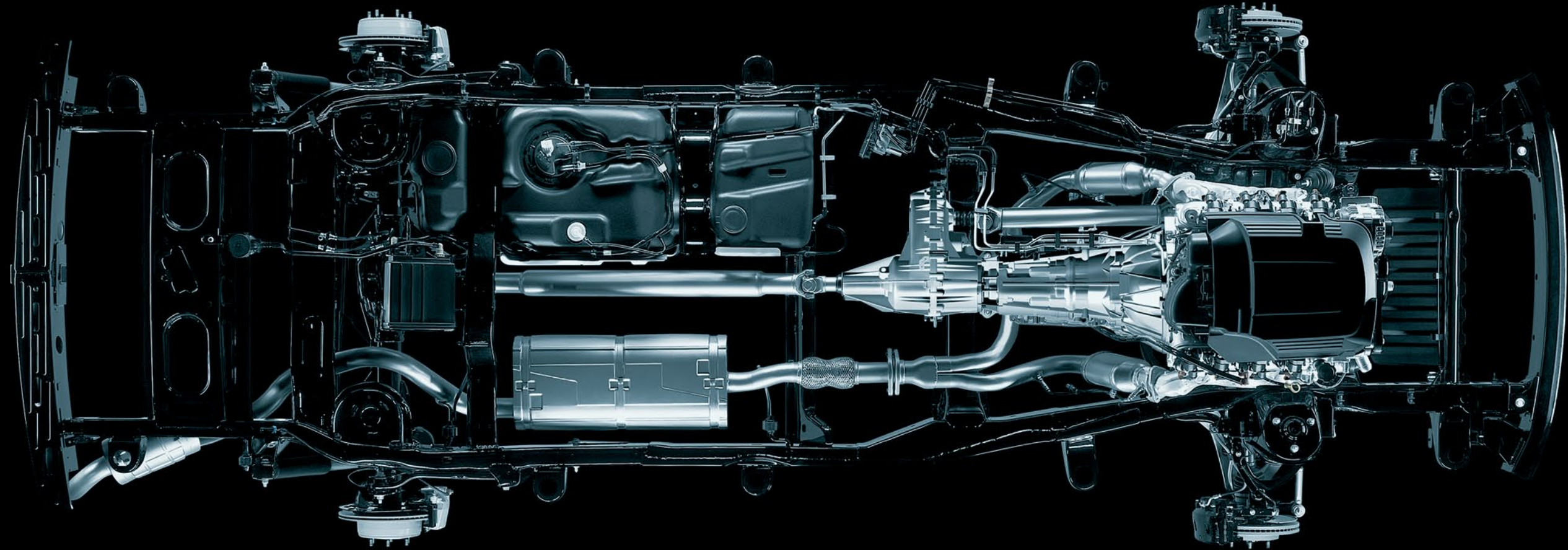
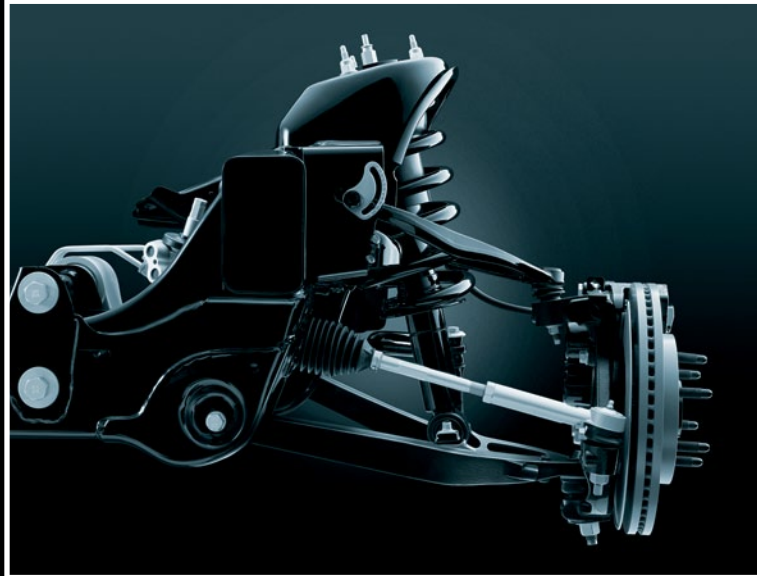


All-wheel drive, an available feature, is always on. A fixed torque bias enhances vehicle stability by distributing drive torque to front and rear wheels, controlling power and torque.

Magnetic Ride Control,⁴ an available feature, reads the road up to 1,000 times a second and adjusts to changing road conditions every 5 milliseconds, giving you an almost instantaneous response to any road surface.

A rigid frame provides the foundation for an advanced suspension system and rack-and-pinion steering, improving handling.

The Escalade features a 403hp 6.2L Vortec V8 VVT engine, Active Fuel Management, E85¹ capability and available all-wheel drive for maximum control. A towing capacity up to 8,300 lbs² so you can pull just about anything. Performance-oriented engineering that goes from 0 to 60 in 6.5 seconds. A 6-speed automatic transmission that addresses both driver demand and vehicle load and lets you shift manually when you need to. And a rear-locking differential that helps you power through some of the worst road conditions with confidence.



¹ Go to gm.com/E85 to see if there is an E85 station near you.

² Maximum trailer-weight ratings are calculated assuming a base vehicle, except for any option(s) necessary to achieve rating, plus driver. The weight of other optional equipment, passengers and cargo will reduce the maximum trailer weight your vehicle can tow. See your Cadillac dealer for additional details.

³ Escalade RWD: EPA estimated mpg 14 city/18 highway. Escalade AWD: EPA estimated mpg 13 city/18 highway.

⁴ Requires available 22" wheels.

THE ESCALADE EXT



Top-box storage is great for small, wet or dirty cargo you don't want inside the vehicle.

The EXT's lockable tonneau cover helps keep all your cargo secured and dry.

THE ESCALADE ESV

A Rear-Seat Entertainment System is available, with two overhead screens for both second- and third-row passengers.

ESV cargo space¹ amounts to 45.8 cu ft behind the third-row seating, 90 cu ft behind the second, and a maximum of 137.4 cu ft behind the first, the most in its class.²

ESV Platinum is also available for the ultimate in luxury and passenger-carrying capability.

The all-wheel drive Escalade EXT is a utility truck with a luxury pedigree. It transforms itself with ease from a 5-passenger SUV into a 2-passenger pickup with an 8-foot bed. Behind the EXT's rear seat is the key to its versatility, the Midgate® panel. For open-air driving, simply unlatch the rear window and stow it in the special recess in the Midgate panel. Fold the Midgate panel forward with the window in place to create 101 cubic feet of covered and secure cargo volume¹ or remove the tonneau cover and there's an 8-foot cargo bed ready to be put to use.

The Escalade ESV seats up to eight in full Escalade comfort, and still has 45.8 cubic feet of cargo volume¹ for luggage, or golf clubs, or whatever you need to bring along. Combine the 130" wheelbase (14" longer than the Escalade) with its advanced suspension, and the resulting ride is sublime. Thanks to the precise power rack-and-pinion steering, size doesn't matter when you're behind the wheel of the ESV. Negotiating parking lots is stress-free. Recalibrated for ESV's almost 30 additional cubic feet¹ of interior space, the Bose® 5.1 surround sound system is nothing short of noteworthy.



¹ Cargo and load capacity limited by weight and distribution.

² Based on 2010 Ward's Large Luxury Sport Utility vehicle segment.

ESCALADE FEATURES AND OPTIONS

Powertrain	ESC	HYB	PLA	ESV	EXT
Gen IV 6.2L Vortec V8 VVT with Active Fuel Management: 403hp @ 5700rpm and 417 lb-ft of torque @ 4300rpm; E85 ¹ capable (Not available on Escalade Hybrid Platinum)	S		S	S	S
Gen IV 6.0L Vortec V8 VVT, L1VC with Active Fuel Management: 332hp @ 5100rpm and 367 lb-ft of torque @ 4100rpm (Only available on Hybrid models)		S	S		
All-Wheel Drive system 40/60 front/rear torque split and full-time operation (Not available on Escalade Hybrid Platinum)	A		A	A	S
Four-Wheel Drive system with active 2-speed transfer case, 40/60 front/rear torque split and full-time operation (Only available on Hybrid models)		A	A		
Rear-Wheel Drive system	S	S	S	S	
Hydra-Matic 6L80 Heavy-Duty 6-Speed Automatic Transmission with electronically controlled shifts plus Driver Shift Control manual mode and tow/haul mode (Not available on Escalade Hybrid Platinum)	S		S	S	S
Electronically Variable Transmission with four fixed gears (Only available on Hybrid models)		S	S		
Rear-Locking Differential	S	S	S	S	S
Chassis and Suspension					
Brakes 4-wheel discs, anti-lock braking system, twin-piston front calipers	S	S	S	S	S
Frame All-welded fully boxed ladder-type	S	S	S	S	S
Level Control Automatic electronic rear-level control system	S	S	S	S	S
Magnetic Ride Control² Coil-over shock-front/5-link rear with magneto-rheological fluid-filled shocks and computer-controlled real-time damping	A	S	S	A	A
Road-Sensing Suspension Coil-over shock-front/5-link rear with bi-modal monotube shocks and computer-controlled real-time damping	S			S	S
StabiliTrak with Rollover Mitigation Computer-controlled, 4-channel Electronic Stability Control System	S	S	S	S	S
Steering Power rack-and-pinion	S	S	S	S	S
Traction Control All-speed traction control with brake and engine intervention	S	S	S	S	S
Trailer Heavy-Duty Trailering Package	S	S	S	S	S
Exterior Features					
Lighting Xenon High-Intensity Discharge (HID) headlamps and halogen foglamps	S	S		S	S
LED Headlamps			S		
Perimeter Lighting With mirror-mounted puddle lamps	S	S	S	S	S
Mirrors Exterior rearview, heated, power-adjustable, power-folding, curb view assistance, LED turn signal indicators, puddle lamps and automatic-dimming driver's side	S	S	S	S	S
Power Liftgate Open/close; with remote control	S	S	S	S	
Running Boards Integrated	S	S		S	S
Power-Retractable Running Boards	A	A	S	A	A
Ultrasonic Rear Park Assist With audible warning	S	S	S	S	S
Vehicle Theft-Deterrent PASS-Key III+	S	S	S	S	S

Interior Features	ESC	HYB	PLA	ESV	EXT
Adaptive Remote Start Includes two remote transmitters, remote start, climate control system and heated seat activation	S	S	S	S	S
Adjustable Pedals Power-adjustable, with memory	S	S	S	S	S
Airbags³ Dual-stage driver and front passenger, front-impact, Automatic Occupant Sensing System, driver and front passenger seat-mounted side-impact airbags for thorax and pelvic protection and head-curtain side-impact airbags with rollover protection for all outboard passenger rows	S	S	S	S	S
Audio System Bose® 5.1 surround sound system, AudioPilot® noise compensation technology and 10 speakers (EXT: 8 speakers) equalized to Escalade's interior	S	S	S	S	S
Independent Rear-Seat Audio Controls With two earphone jacks (earphones not included)	S	S	S	S	S
XM Radio⁴ With three trial months	S	S	S	S	S
Bluetooth® for Phone Interface⁵ Hands-free calling for cell phones	S	S	S	S	S
Tri-Zone Climate Control Automatic electronic climate control with individual settings for driver, front passenger and rear seating areas	S	S	S	S	
Dual-Zone Climate Control Automatic electronic climate control with individual settings for driver and front passenger					S
Consoles Dual-lid center floor console with large storage compartments and four cupholders, overhead console with reading lamps and Universal Home Remote	S	S	S	S	S
Driver Information Center (DIC) Large 4-line DIC has up to 46 driver information messages, including tire pressure, trip odometer and fuel information such as range, fuel used and average economy. All readouts are displayed in English, French or Spanish. The DIC is the control center to personalize the vehicle with features such as remote door locking and unlocking feedback, headlamp delay, perimeter lighting, seat position recall, alarm warning and outside mirror curb view settings	S	S	S	S	S
Navigation⁶ Full-featured 8" diagonal touch screen navigation system; menu-driven operation plus voice recognition; provides turn-by-turn instructions and voice prompts for directions (limited detailed routing)	S	S	S	S	S
Rear-Seat Entertainment System In-dash DVD with roof-mounted flip-down 8" diagonal screen, two 2-channel wireless headphones, auxiliary audio/video jacks, remote game plug-in (ESV: two 8" diagonal screens and four 2-channel wireless headphones)	A	S	S	A	A
Rear-Seat Entertainment System With two 7" diagonal DVD screens integrated into the back of the front headrests; remote; 2-channel headphones					S
Heated and Cooled Cupholders					S
OnStar⁷ Standard one-year Directions & Connections Plan, includes Turn-by-Turn Navigation	S	S	S	S	S
Rearview Camera Automatic operation when vehicle is put in reverse	S	S	S	S	S
Safety Belts Front seat pretensioners, 360° activation; lap and shoulder belts in all seating positions	S	S	S	S	S

Interior Features	ESC	HYB	PLA	ESV	EXT
Front Seats with leather seating surfaces, heated and cooled seatbacks and cushions with three temperature settings, 14-way power adjusting including 4-way power lumbar, memory setting for two drivers	S	S	S	S	S
Second-Row Bucket Seats with leather seating surfaces and heated cushions; reclining; adjustable head restraints; seats fold and tumble (Not available on Escalade Hybrid Platinum)	S		S	S	
Second-Row Bench Seating with leather seating surfaces and heated cushions (outboard), 60/40 split-folding seats, adjustable head restraints (outboard), seats fold and tumble, folding center armrest with storage area (Standard on Escalade Hybrid Platinum; EXT seats not heated)	A	S	A	A	S
3-Passenger Third-Row Seating 50/50 split-bench seats adjust individually and can be folded, tumbled forward or totally removed	S	S	S	S	
Steering Wheel Color-keyed leather trim, authentic wood accents	S	S	S	S	S
Steering Wheel Controls Audio system, cruise control, OnStar, hands-free calling button	S	S	S	S	S
Sunroof Power, tilt-sliding with express-open and -close and sunshade	A	S	S	A	A
Tilt Wheel Power-adjustable steering column	S	S	S	S	S
Tire Pressure Monitor Includes individual sensors with specific pressures displayed in Driver Information Center	S	S	S	S	S
Universal Home Remote 3-channel programmable	S	S	S	S	S
Windows Driver and front passenger windows express-up and -down	S	S	S	S	S
Luxury Collection in addition to standard features:	A	S	S	A	A
Lighting IntelliBeam headlamps with automatic high/low-beam switching					
Magnetic Ride Control² Coil-over shock-front/5-link rear with magneto-rheological fluid-filled shocks and computer-controlled real-time damping					
Seat Release Power-release fold-and-tumble second-row seat (Available with either bucket or bench second-row seats, not available on EXT or Hybrid)					
Side Blind Zone Alert⁸ Notifies you with visual cues if it detects a vehicle entering into your blind spots (Not available on EXT)					
Steering Wheel Heated (Not available on Hybrid)					
Sunroof Power, tilt-sliding with express-open and -close and sunshade					
Wheels 22" 7-spoke chromed aluminum wheels with P285/45R22 blackwall performance touring tires ⁹					
Premium Collection in addition to Luxury Collection features:	A	S	S	A	A
Power-Retractable Running Boards (Available on Hybrid)					

Rear-Seat Entertainment System In-dash DVD with roof-mounted flip-down 8" diagonal screen, two 2-channel wireless headphones, auxiliary audio/video jacks, remote game plug-in (ESV includes two 8" diagonal screens and four 2-channel wireless headphones)					
---	--	--	--	--	--


Platinum (Escalade/ESV/Hybrid)

The most generously appointed in the Escalade portfolio, the Escalade Platinum features an abundance of technical innovations and distinctive design touches, including: Unique front fascia with upper and lower grilles; LED headlamps; 22" multi-spoke chromed aluminum wheels;⁹ an exclusive Light Linen/Cocoa interior; leather-wrapped instrument panel and trim. TEHĀMA¹⁰ full-leather first- and second-row seats; embroidered Cadillac insignias and unique door sills; genuine Olive Ash and Burled Walnut wood trim; Rear-Seat Entertainment System with two 7" diagonal DVD screens integrated into the back of the front headrests with remote and 2-channel headphones; heated and cooled cupholders.


Capacities and Dimensions ¹¹
<p>Escalade, Escalade Hybrid</p> <p>Cargo volume behind third-row seat: 16.9 cu ft¹¹ Cargo volume behind second row with third-row seats removed: 60.3 cu ft¹¹ Cargo volume with second-row seats stowed and third row removed: 108.9 cu ft¹¹</p>  <p>Wheelbase 116.0" Length 202.5"</p>
<p>ESV</p> <p>Cargo volume behind third-row seat: 45.8 cu ft¹¹ Cargo volume behind second row with third-row seats removed: 90.0 cu ft¹¹ Cargo volume with second-row seats stowed and third row removed: 137.4 cu ft¹¹</p>  <p>Wheelbase 130.0" Length 222.4"</p>
<p>EXT</p> <p>Bed height: 25.0" Bed length with Midgate® up: 63.0" Bed length with Midgate down: 97.6" Bed width: 50.0"</p>  <p>Wheelbase 130.0" Length 222.4"</p>

Trailer ^{ing} Maximum payload/trailer weight ¹²	
Escalade (AWD)	1,606/8,100 lb
Escalade (RWD)	1,612/8,300 lb
Hybrid (4WD)	1,380/5,600 lb
Hybrid (RWD)	1,421/5,800 lb
ESV (AWD)	1,437/7,700 lb
ESV (RWD)	1,427/8,000 lb
EXT (AWD)	1,251/7,600 lb

Wheels and Tires

 **18" 7-spoke aluminum machined finish** with P265/65R18 blackwall touring tires

 **22" 7-spoke chromed aluminum** with P285/45R22 blackwall performance touring tires (Standard on Luxury Collection, Premium Collection and Hybrid)⁹

 **22" multi-spoke chromed aluminum** with P285/45R22 blackwall performance touring tires (Standard on Platinum)⁹

¹Go to gm.com/E85 to see if there is an E85 station near you. ²Requires available 22" wheels. ³Always use safety belts and the correct restraint for your child's age and size, even in vehicles equipped with Automatic Occupant Sensing System. Children are safer when properly secured in the rear seat, in an appropriate infant, child or booster seat. Never place a rear-facing infant restraint in the front seat of any vehicle equipped with an active frontal airbag. See the Owner's Manual for more safety information. ⁴Requires a subscription sold separately by XM after trial period. Available only in the 48 contiguous United States and District of Columbia. Visit gm.xradio.com for details. ⁵Go to gm.com/bluetooth to find out which Bluetooth phones are compatible with this vehicle. ⁶Map coverage available in the United States, U.S. Virgin Islands, Puerto Rico, and Canada. ⁷Visit onstar.com for coverage map, details and system limitations. ⁸Before making a lane change, always check the SBZA display, check the side and inside rear mirrors, look over your shoulder for vehicles and hazards, and start the turn signal. ⁹Use only GM-approved wheel/tire combinations. See dealer for details. ¹⁰The TEHĀMA trademark is used under license by General Motors. ¹¹Cargo and load capacity limited by weight and distribution. See your dealer for more information. ¹²Maximum trailer-weight ratings are calculated assuming a base vehicle, except for any option(s) necessary to achieve the rating, plus driver. The weight of other optional equipment, passengers and cargo will reduce the maximum trailer weight your vehicle can tow. See your Cadillac dealer for additional details.

SAFETY INFORMATION

Passenger safety is a primary consideration throughout the engineering process. A robust body. Six standard airbags.¹ OnStar² Directions & Connections Plan with Automatic Crash Response as well as advisory and emergency services. Tire pressure monitor. Available Side Blind Zone Alert.³ Anti-lock brake system. A look beneath the beautiful exterior reveals a comprehensive approach to safety.

Airbags¹ Escalade's airbag configuration consists of a dual-stage driver's front airbag, a dual-stage front passenger airbag with Automatic Occupant Sensing System, as well as driver and front passenger seat-mounted side-impact airbags and roof-mounted head-curtain side airbags for all three rows.

OnStar² Automatic Crash Response In a crash, built-in sensors in your vehicle can automatically send an alert to OnStar. An OnStar Advisor is immediately connected to your vehicle to see if you're okay. Even if you don't respond, the Advisor can use GPS technology to locate you and request that emergency help be sent right away.

Side Blind Zone Alert³ The available Side Blind Zone Alert uses alternating beams of radar to sweep adjacent lanes of traffic in 150° arcs. A vehicle entering those zones will trigger a visual alert in your corresponding outside rearview mirror, so when you check the mirror, you will know it's there even though you can't see it.

Anti-Lock Brakes The Escalade's anti-lock brake system employs powerful disc brakes for impressive braking performance on a variety of surfaces. Incorporating large-diameter vented rotors and twin-piston front calipers, the system provides the strength and cooling properties to match the Escalade's formidable power, yet requires only a comfortable amount of pedal pressure.

Tire Pressure Monitor A sensor in each tire constantly monitors air pressure.⁴ Should there be a drop in pressure, you will receive an alert via the Driver Information Center.

StabiliTrak with Rollover Mitigation Standard on all Escalade models, the StabiliTrak system also incorporates Rollover Mitigation. The system senses conditions that might result in loss of control, including potential rollover situations, and makes adjustments in braking and power delivery to help you keep on the path you're steering.

LUXURY COVERAGE AND OWNER PRIVILEGES



Cadillac offers the Best Luxury Coverage in the Industry with the Cadillac 5-Year/100,000-Mile Transferable Powertrain Limited Warranty with no deductible plus Roadside Assistance and Courtesy Transportation. Whichever comes first — see your dealer for details.

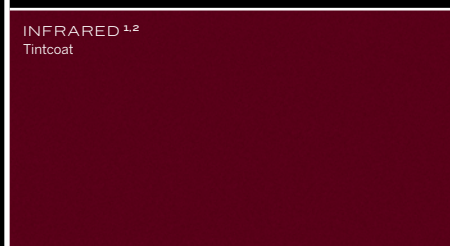
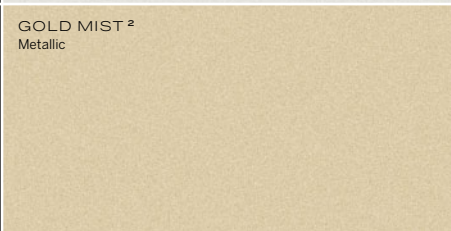
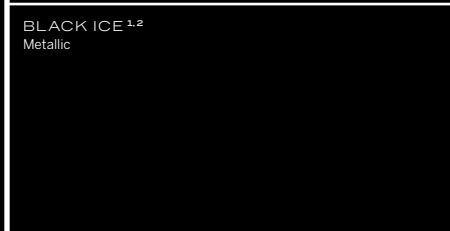
Owner Privileges By driving an Escalade, you're part of a select group that enjoys special privileges, like the new Cadillac Owner Center, a one-stop resource to enhance your Cadillac ownership experience. Powered by Yahoo!, the Owner Center includes online service reminders, special offers, an online Owner's Manual and more. Members can also store their service records in one place online and have the opportunity to connect with other Cadillac owners. Enroll for these benefits at cadillac.com/owners. Owner Privileges also include 24-hour Roadside Assistance (1-800-882-1112). Free roadside services include jump starts, towing, lockouts, emergency fuel delivery and flat tire change or Tire Inflator Kit Service (as equipped). And if your trip is

interrupted due to vehicle failure, reasonable expenses may be reimbursed during the 5-Year/100,000-Mile Roadside Coverage period with Trip Interruption Protection. Your vehicle is also covered by the GM Bumper-to-Bumper limited warranty.

Courtesy Transportation is also available whenever your vehicle is in for warranted repairs. Cadillac Roadside Assistance and Courtesy Transportation Programs are in effect for the first 60 months or 100,000 miles of ownership, whichever comes first. See your dealer for complete details, terms and conditions of these programs, and the GM limited warranty.

¹ Always use safety belts and the correct child restraint for your child's age and size, even in vehicles equipped with Automatic Occupant Sensing System. Children are safer when properly secured in the rear seat, in an appropriate infant, child or booster seat. Never place a rear-facing infant restraint in the front seat of any vehicle equipped with an active frontal airbag. See the vehicle Owner's Manual and child safety seat instructions for more safety information.
² Visit onstar.com for coverage map, details and system limitations.
³ Before making a lane change, always check the SBZA display, check the side and inside rear mirrors, look over your shoulder for vehicles and hazards, and start the turn signal.
⁴ If equipped, does not apply to spare tire.

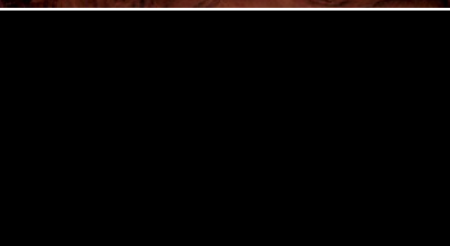
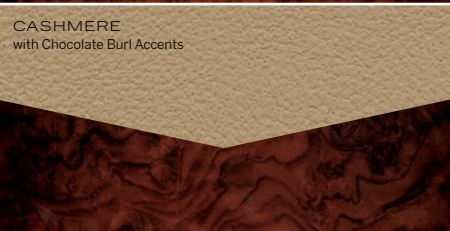
EXTERIOR



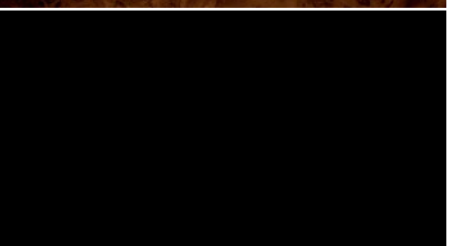
Tri-coat is a meticulous 3-layer process that results in a dramatic hue-shifting color reminiscent of a show-car finish.

Tintcoat is a premium 2-layer paint application with the addition of a tinted clearcoat, lending the finish an extra depth and brightness.

INTERIOR



PLATINUM INTERIOR



¹ Available at extra charge on non-Platinum and non-Hybrid models.
² Not available on EXT.
³ Not available on Platinum.



About this catalog

We have tried to make this catalog comprehensive and factual. We reserve the right, however, to make changes at any time, without notice, in prices, colors, materials, equipment, specifications, models and availability. Specifications, dimensions, measurements, ratings and other numbers in this catalog and other printed materials provided at the dealership or affixed to vehicles are approximates based upon design and engineering drawings and prototypes and laboratory tests. Your vehicle may differ due to variations in manufacture and equipment. Since some information may have been updated since the time of printing (08/10), please check with your Cadillac dealer for complete details. Any variations in colors shown are due to reproduction variation in the printing process.

Cadillac reserves the right to lengthen or shorten the model year for any product for any reason, or start and end model years at different times.

Note: Some photographs in this catalog show vehicles with optional equipment.

OnStar

OnStar services require vehicle electrical system (including battery), wireless service and GPS satellite signals to be available and operating for features to function properly. OnStar acts as a link to existing emergency service providers. Subscription Service Agreement required. Call 1-888-4ONSTAR (466-7827) or visit onstar.com for OnStar's Terms and Conditions, Privacy Policy and details and system limitations.

Engines

Cadillac products are equipped with engines produced by GM Powertrain or suppliers to GM worldwide. The engines in Cadillac products may also be used in other GM makes or models.

Tire Sealant and Compressor Kit

Unless you option into a spare tire, there is no jack or spare tire in this vehicle. If you do not option into the spare tire, your vehicle has a tire sealant and compressor kit that uses a liquid tire sealant to temporarily seal up to a ¼-inch puncture in the tread area of the tire. After using the inflator kit, it is recommended to take the tire to an authorized dealer for inspection and repair as soon as possible but at least within 100 miles of driving. The tire sealant cannot seal and inflate sidewall damage, punctures larger than ¼ inch, or a tire that has unseated from the wheel. The sealant can only be used on one tire one time before its expiration date.

Assembly

Cadillac vehicles and their components are assembled or produced by different operating units of General Motors, its subsidiaries or suppliers to GM worldwide. We sometimes find it necessary to produce Cadillac vehicles with different or differently sourced components than originally scheduled. Since some options may be unavail-

able when your vehicle is assembled, we suggest that you verify that your vehicle includes the equipment you ordered or, if there are changes, that they are acceptable to you.

Updated Service Information

Cadillac dealers receive useful service bulletins about Cadillac products. You may purchase them from Helm Incorporated by calling 1-800-551-4123 or by visiting www.helminc.com.

New Vehicle Limited Warranty

The Best Luxury Coverage in the Industry, standard on every 2011 Cadillac. This warranty is for Cadillac vehicles registered in the U.S.A. See your Cadillac dealer for terms and conditions.

Covered for 5 Years/100,000 Miles (Whichever Comes First):

Powertrain Limited Warranty with no deductible
Roadside Assistance Program¹
Courtesy Transportation Program¹

Covered for 4 Years/50,000 Miles (Whichever Comes First):

Bumper-to-Bumper coverage
Tires – Defects in material and workmanship
Repairs made to correct any vehicle defect
Corrosion on body sheet metal panels

Rust Through Protection

Cadillac vehicles are designed and built to resist corrosion and rust-through corrosion. Any body sheet metal that rusts through (in the form of an actual hole in the sheet metal) is covered for six years unlimited mileage. Cosmetic or surface corrosion, resulting from stone chips or scratches in the paint, for example, is not included in the Rust Through coverage. Application of additional rust-inhibiting materials is not required under the Rust Through coverage and none is recommended. See your Cadillac dealer for terms of this limited warranty.

Fleet Orders

Some standard content may be deleted with fleet orders. See dealer for details.

¹ Roadside Assistance Program and Courtesy Transportation Program are not a part of the New Vehicle Limited Warranty. A separate booklet entitled "Warranty and Owner Assistance Information" furnished with each new vehicle provides detailed warranty coverage information.

GM, the GM emblem, Cadillac, the Cadillac badge, OnStar, the OnStar emblem and the slogans, emblems, vehicle model names, vehicle body designs and other marks appearing in this catalog are the trademarks and/or service marks of General Motors, its subsidiaries, affiliates or licensors. © 2010 General Motors. All rights reserved.

Cadillac

CADILLAC.COM/ESCALADE