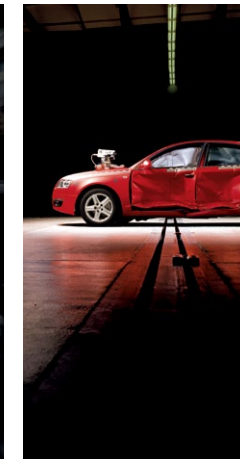




2011 Full Line

Audi
Truth in Engineering





substance always wins the day



It takes more than hard work, dedication and vision to create the truly exceptional. It takes something intangible. Something you can't quite put your hands on. It's courage, guts, perseverance, passion and fierceness of focus all wrapped into one.

And it's this intangible characteristic that defines all of us at Audi. It's the driving force behind

every pencil line we draw, every calculation we make and every idea we deem not good enough.

It's why every inch and curve and angle has purpose. It's why we test our cars at the highest of speeds for hours on end so they can be driven on any surface and in any condition - rain, shine or white-out blizzard.

It's why substance always wins the day. It's why cutting a corner, even a weld seam in the trunk, would be sacrilegious. And it's why for us scrutiny is so deeply ingrained it's like the very act of breathing.

This is Truth in Engineering. And this is Audi.

a badge doesn't define you
it represents you





A8 4.2

Contents

6	A8 A8 L
8	A6
10	A6 Avant
12	A5
14	A5 Cabriolet
16	A4
18	A4 Avant
20	A3 A3 TDI®
22	Q7 Q7 TDI
24	Q5
26	TT Coupe TT Roadster
<hr/>	
28	S6
30	S5
32	S5 Cabriolet
34	S4
36	TTS Coupe TTS Roadster
<hr/>	
38	R8 Coupe 5.2
40	R8 Spyder 5.2
42	R8 Coupe 4.2

pinnacle

A new benchmark in the luxury vehicle category. The A8 flagship is all-new and completely redesigned, representing the best in engineering, technology, design and performance. The all-new A8 has moved luxury forward, solidifying the Audi commitment to excellence and refusal to settle for anything less.





A8

STANDARD FEATURE HIGHLIGHTS

A8

- 19" ten-Y-spoke wheels with 255/45 all-season tires
- Audi adaptive air suspension
- 18-way, power adjustable front seats
- Audi drive select
- Audi pre sense
- Audi MMI® Navigation* with real-time traffic and HD Radio™ Technology
- Audi MMI touch
- Audi xenon plus headlights with LED daytime running lights
- Three-spoke, multifunction steering wheel with shift paddles
- BOSE® Premium Surround Sound System

A8 L

- Audi parking system plus with rearview camera
- Power trunk open/close
- Power closing doors
- Four-spoke, multifunction steering wheel with shift paddles
- Audi advanced key: keyless start/stop and entry
- Power rear and rear side sunshades

MODEL CONFIGURATIONS

- 4.2 FSI® 372hp with eight-speed Tiptronic® automatic transmission and quattro® all-wheel drive

* See back cover for important information.
Standard feature highlights listed only. Please see audiusa.com for all available options and packages.





A6 Prestige

refined

Sophisticated styling blended with modern touches make the A6 a standout among the competition. The Audi A6 is alone at the top with a best-in-class combination of power, handling and luxury. With a 300hp 3.0T supercharged engine that propels the A6 from 0 to 60 MPH in a mere 5.9 seconds, it was named “Best in Test” by *Car and Driver*.*

A6

STANDARD FEATURE HIGHLIGHTS

A6 PREMIUM

- 17" five-spoke wheels with 245/45 all-season tires
- S line® exterior
- Eight-way, power front seats with four-way, power lumbar adjustment and leather seating surfaces [heated on 3.0T]
- Audi music interface with iPod® integration
- Audi MMI® Navigation plus† with voice control, real-time traffic and HD Radio™ Technology
- HomeLink® universal garage door opener and Bluetooth®** mobile phone preparation

A6 PREMIUM PLUS

- 18" five-Y-spoke wheels with 245/40 all-season tires
- Audi xenon plus headlights with LED daytime running lights
- Audi parking system rear

A6 PRESTIGE

- 18" ten-spoke wheels with 245/40 all-season tires
- Adaptive headlights with cornering lights
- Four-spoke, multifunction steering wheel with shift paddles
- BOSE® 5.1 Surround Sound with 13 speakers
- Audi advanced key: keyless start/stop and entry
- Audi parking system with rearview camera

MODEL CONFIGURATIONS

- 3.2 FSI® 265hp with Multitronic® CVT automatic transmission and FrontTrak® front-wheel drive
- 3.0 TFSI® 300hp with six-speed Tiptronic® automatic transmission and quattro® all-wheel drive
- 4.2 FSI 350hp with six-speed Tiptronic automatic transmission and quattro all-wheel drive

* *Car and Driver*, September 2009.

† See back cover for important information.

Standard feature highlights listed only. Please see audiusa.com for all available options and packages.



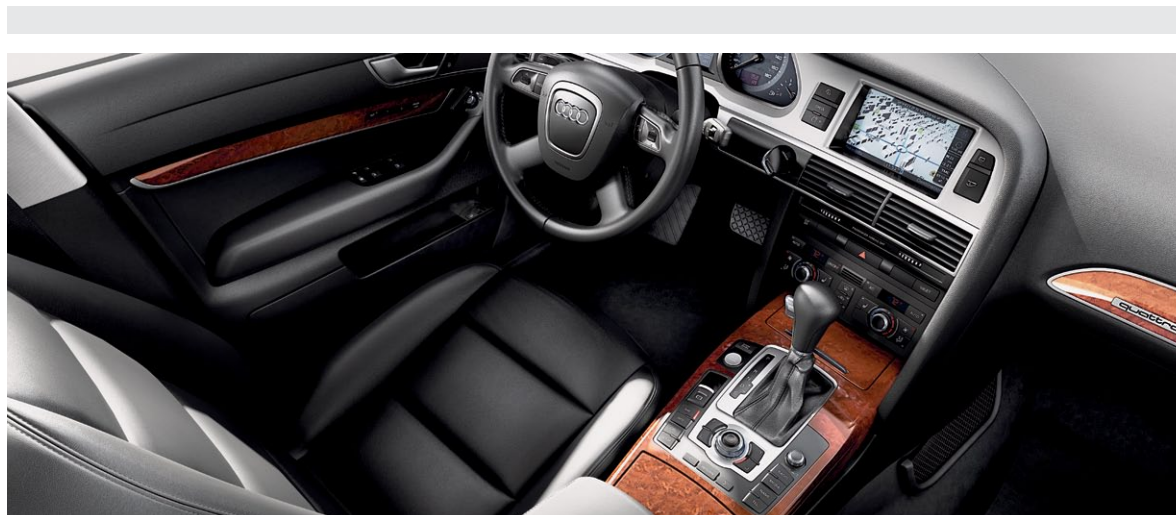
A6

Avant

distinguished

There's only one other car in the same league as the A6 sedan, and that's the 300hp supercharged A6 Avant. It has a unique blend of style, luxury and performance while offering

64 cu. ft. of cargo capacity. Race-bred handling and performance, total luxury and convenient utility – the stylish A6 Avant offers the best of all worlds.



STANDARD FEATURE HIGHLIGHTS

A6 PREMIUM

- S line® exterior
- 17" five-spoke wheels with 245/45 all-season tires
- Eight-way, heated, power front seats with four-way, power lumbar adjustment and leather seating surfaces
- Audi music interface with iPod® integration
- HomeLink® universal garage door opener and Bluetooth™ hands-free phone preparation
- Power tailgate with one-touch open and close feature
- Audi MMI® Navigation plus* with voice control, real-time traffic and HD Radio™ Technology

A6 PREMIUM PLUS

- 18" five-Y-spoke wheels with 245/40 all-season tires
- Audi xenon plus headlights with LED daytime running lights
- Audi parking system rear

A6 PRESTIGE

- 18" ten-spoke wheels with 245/40 all-season tires
- Adaptive headlights with cornering lights
- Four-spoke, multifunction steering wheel with shift paddles
- BOSE® 5.1 Surround Sound with 13 speakers
- Audi advanced key: keyless start/stop and entry
- Audi parking system with rearview camera

MODEL CONFIGURATIONS

- 3.0 TFSI® 300hp with six-speed Tiptronic® automatic transmission and quattro® all-wheel drive

* See back cover for important information.
Standard feature highlights listed only. Please see audiusa.com for all available options and packages.

thrilling

The award winning design of the striking Audi A5 provides a presence on the road unlike any other vehicle. Luxury abounds inside the elegantly designed, driver-oriented cockpit.

Combined with standard quattro® all-wheel drive, an eight-speed Tiptronic® transmission, and an incredibly powerful yet efficient* engine, the A5 is a true driver's car.





A5

STANDARD FEATURE HIGHLIGHTS

A5 PREMIUM

- 18" ten-spoke wheels with 245/40 all-season tires
- Eight-way, power front seats with driver four-way lumbar adjustment and leather seating surfaces
- Audi concert radio with ten speakers and SIRIUS® Satellite Radio
- Panoramic tilting glass panel sunroof

A5 PREMIUM PLUS

- Audi xenon plus headlights with LED daytime running lights
- Heated front seats
- HomeLink® universal garage door opener and Bluetooth®** mobile phone preparation
- Three-zone automatic climate control

A5 PRESTIGE

- Audi MMI® Navigation plus* with voice control and HD Radio™ Technology
- Bang & Olufsen® Sound System with 14 speakers
- Audi advanced key: keyless start/stop and entry
- Memory for driver seat and outside mirrors
- Audi parking system with rearview camera

MODEL CONFIGURATIONS

- 2.0 TFSI® 211hp with six-speed manual transmission and quattro® all-wheel drive
- 2.0 TFSI 211hp with eight-speed Tiptronic® transmission and quattro all-wheel drive

*EPA estimates: 21/31 city/highway MPG. Your mileage will vary.

†See back cover for important information.

Standard feature highlights listed only. Please see audiusa.com for all available options and packages.

A5 Prestige



A5 Cabriolet



accelerated

Featuring the flowing lines of the sophisticated and graceful A5, the A5 Cabriolet offers a top-down driving experience for four. With its well-balanced and beautiful proportions,

it offers both performance and luxury. Select the available quattro® all-wheel drive and you get performance-oriented motoring with open top, high style.

STANDARD FEATURE HIGHLIGHTS

A5 PREMIUM

- 18" ten-spoke wheels with 245/40 all-season tires
- Power acoustic convertible soft top
- Eight-way, power front seats with driver four-way lumbar adjustment and leather seating surfaces
- Audi concert radio with ten speakers and SIRIUS® Satellite Radio
- Split folding rear seat back with full pass-through

A5 PREMIUM PLUS

- 18" 15-spoke wheels with 245/40 all-season tires
- Audi xenon plus headlights with LED daytime running lights
- Heated front seats
- HomeLink® universal garage door opener and Bluetooth® mobile phone preparation
- Three-zone automatic climate control

A5 PRESTIGE

- Audi MMI® Navigation plus¹ with HD Radio™ Technology
- Bang & Olufsen® Sound System with 14 speakers
- Memory for driver seat and outside mirrors
- Audi advanced key: keyless start/stop and entry
- Audi parking system with rearview camera

MODEL CONFIGURATIONS

- 2.0 TFSI® 211hp with Multitronic® CVT and FrontTrak® front-wheel drive
- 2.0 TFSI 211hp with eight-speed Tiptronic® transmission and quattro® all-wheel drive

* See back cover for important information.
Standard feature highlights listed only. Please see audiusa.com for all available options and packages.

dialed

The Audi A4 is the biggest, fastest and most fuel-efficient vehicle in the sports sedan category. Featuring the 2.0T engine, named one of Ward's Ten Best Engines five years in a row; it offers six-cylinder performance with the efficiency of a four-cylinder. The A4 provides sportscar performance with unparalleled luxury and attention to detail throughout.



A4



STANDARD FEATURE HIGHLIGHTS

A4 PREMIUM

- 17" seven-spoke wheels with 225/50 all-season tires
- Eight-way, power front seats with driver four-way lumbar adjustment and leather seating surfaces
- Audi concert radio with ten speakers and SIRIUS® Satellite Radio
- Four-spoke, multifunction, leather-wrapped steering wheel

A4 PREMIUM PLUS

- 17" ten-spoke wheels with 245/45 all-season tires
- Audi xenon plus headlights with LED daytime running lights
- Heated front seats
- Audi music interface with iPod® integration
- Three-zone automatic climate control

A4 PRESTIGE

- 18" five-spoke wheels with 245/40 all-season tires
- Audi MMI® Navigation plus† with voice control and HD Radio™ Technology
- Bang & Olufsen® Sound System with 14 speakers
- Audi advanced key: keyless start/stop and entry
- Audi parking system with rearview camera

MODEL CONFIGURATIONS

- 2.0 TFSI® 211hp with Multitronic® CVT and FrontTrak® front-wheel drive
- 2.0 TFSI 211hp with six-speed manual transmission and quattro® all-wheel drive
- 2.0 TFSI 211hp with eight-speed Tiptronic® transmission and quattro all-wheel drive

*Based on 2008 AMCI data.

†Ward's Automotive, December 2009. For a list of the 34 vehicles evaluated and 10 winners, see WardsAuto.com.

‡See back cover for important information.

Standard feature highlights listed only. Please see audiusa.com for all available options and packages.

A4 Premium Plus



A4 Avant Premium Plus

maximize

Take the class-leading design, luxury and performance of the A4 sedan, add the notion of progressive utility, and you have the unique and eye-catching Audi A4 Avant. Inside, the available 60/40 split folding rear seats offer 50.5 cu. ft. of

carrying capacity*, while the Open Sky panorama sunroof adds an enhanced level of luxury and comfort. The A4 Avant delivers an unequaled driving experience and thoughtful functionality.



A4

Avant

STANDARD FEATURE HIGHLIGHTS

A4 PREMIUM

- 17" seven-spoke wheels with 225/50 all-season tires
- Eight-way, power front seats with driver four-way lumbar adjustment and leather seating surfaces
- Audi concert radio with ten speakers and SIRIUS® Satellite Radio
- Open Sky panorama sunroof

A4 PREMIUM PLUS

- 17" ten-spoke wheels with 245/45 all-season tires
- Audi xenon plus headlights with LED daytime running lights
- Heated front seats
- Audi music interface with iPod® integration
- Three-zone automatic climate control

A4 PRESTIGE

- 18" five-spoke wheels with 245/40 all-season tires
- Audi MMI® Navigation plus† with voice control and HD Radio™ Technology
- Bang & Olufsen® Sound System with 14 speakers
- Audi advanced key: keyless start/stop and entry
- Audi parking system with rearview camera

MODEL CONFIGURATIONS

- 2.0 TFSI® 211hp with eight-speed Tiptronic® transmission and quattro® all-wheel drive

* Carrying capacity when seats are folded.

† See back cover for important information.

Standard feature highlights listed only. Please see audiusa.com for all available options and packages.



efficient

A progressive package of luxury, utility and performance. The A3 is available with the advanced technology of quattro® all-wheel drive that not only helps enhance handling but also overcomes nearly any adverse road condition. Select between two advanced engine choices, the 2.0 TFSI® engine or the ultra-efficient and

powerful 2.0 TDI® turbocharged diesel offering 42 MPG* highway. With either a slick shifting six-speed transmission or available S tronic® dual-clutch transmission that delivers lightning fast shifts, you are in for an unforgettable driving experience.





A3 TDI® Premium Plus

A3

STANDARD FEATURE HIGHLIGHTS

A3 PREMIUM

- 17" five-split-spoke wheels with 225/45 all-season tires
- S line® exterior features, including front/rear bumpers and rear spoiler
- Leather seating surfaces
- Dual-zone automatic climate control
- Audi concert radio with ten speakers and SIRIUS® Satellite Radio

A3 PREMIUM PLUS

- 17" ten-spoke wheels with 225/45 all-season tires
- Audi xenon plus headlights with LED daytime running lights
- Leather-wrapped, three-spoke, multifunction steering wheel with shift paddles
- Eight-way, power driver's seat with four-way, power lumbar adjustment and leather seating surfaces
- Bluetooth®* mobile phone preparation

MODEL CONFIGURATIONS

- 2.0 TDI® clean diesel 140hp with six-speed S tronic® automatic transmission and front-wheel drive
- 2.0 TFSI® 200hp with six-speed manual transmission and front-wheel drive
- 2.0 TFSI 200hp with six-speed S tronic automatic transmission and front-wheel drive
- 2.0 TFSI 200hp with six-speed S tronic automatic transmission and quattro® all-wheel drive

* Audi A3 TDI, 30/42/34 city/highway/combined MPG. EPA estimates. Your mileage will vary.

† See back cover for important information.

Standard feature highlights listed only. Please see audiusa.com for all available options and packages.

progressive

Redefining the concept of a seven-passenger SUV, the Audi Q7 offers sophisticated design, luxury and performance unlike anything else in the category. Featuring a choice of three powerful and efficient* engines, including the advanced technology of TDI® clean diesel, the Q7 offers unrivaled driving dynamics, interior functionality and style.





Q7 3.0T S line®

Q7

STANDARD FEATURE HIGHLIGHTS

Q7 PREMIUM

- 18" six-spoke wheels with 255/55 all-season tires [3.0T]
- Power tailgate with one-touch open and close feature
- LED taillights
- Audi parking system rear
- Twelve-way, heated, power front seats with leather seating surfaces
- HomeLink® universal garage door opener and Bluetooth™ mobile phone preparation

Q7 PREMIUM PLUS

- Audi xenon plus headlights with LED daytime running lights
- Panorama sunroof
- BOSE® Surround Sound
- Audi MMI® Navigation plus* with voice control
- Audi parking system plus with rearview camera

Q7 PRESTIGE

- 20" S line® wheels with 275/45 all-season tires [3.0T S line only]
- Audi side assist
- Audi advanced key: keyless start/stop and entry
- Warm Weather Package
- Adaptive headlights with cornering lights
- Power tilt/telescoping steering wheel

MODEL CONFIGURATIONS

- 3.0 TFSI® 272hp with eight-speed Tiptronic® automatic transmission and quattro® all-wheel drive
- 3.0 TFSI S line 333hp with eight-speed Tiptronic automatic transmission and quattro all-wheel drive
- TDI® clean diesel 225hp with eight-speed Tiptronic automatic transmission and quattro all-wheel drive

*EPA estimates not available at the time of printing.

†See back cover for important information.

Standard feature highlights listed only. Please see audiusa.com for all available options and packages.





Q5 2.0T Premium Plus

balanced

The Audi Q5 is the benchmark among five-passenger crossovers. With design, performance and utility unmatched in its class, it has won accolades from consumers and press alike. *Car and Driver* named it “Best in Test,” and *Motor Trend* hailed it as the winner in a crossover comparison test*.



Q5

STANDARD FEATURE HIGHLIGHTS

Q5 PREMIUM [2.0T only]

- 18" ten-spoke V design wheels with 235/60 all-season tires
- Twelve-way, power front seats with four-way, power lumbar
- Three-zone climate control
- LED taillights

Q5 PREMIUM PLUS [2.0T | 3.2]

- 19" five-arm wheels with 235/55 all-season tires [3.2]
- S line® exterior features, including front/rear bumpers, side valances, S line doorsills, S line badging on front fenders, and headlight washers [3.2]
- Panorama sunroof
- Power tailgate with one-touch open and close feature
- Audi xenon plus headlights with LED daytime running lights
- HomeLink® universal garage door opener and Bluetooth® mobile phone preparation

Q5 PRESTIGE [3.2 only]

- Audi MMI® Navigation plus† with voice control and HD Radio™ Technology
- Audi parking system plus with rearview camera
- Bang & Olufsen® Sound System with 14 speakers
- Audi advanced key: keyless start/stop and entry
- Audi side assist
- Thermo cup holder

MODEL CONFIGURATIONS

- 2.0 TFSI® 211hp with eight-speed Tiptronic® transmission and quattro® all-wheel drive
- 3.2 FSI® 270hp with six-speed Tiptronic transmission and quattro all-wheel drive

* *Car and Driver*, July 2009, and *Motor Trend*, July 2009.

† See back cover for important information.

Standard feature highlights listed only. Please see audiusa.com for all available options and packages.



iconic

With its head-turning design and class-exclusive quattro® all wheel drive, the Audi TT drives like it looks. Now featuring a 2.0T engine delivering 211hp and 258 lb.-ft. of torque paired with the rapid-fire shifting of the standard S tronic® dual-clutch transmission, the TT is progress in motion.





TT

STANDARD FEATURE HIGHLIGHTS

TT PREMIUM PLUS

- 18" five-arm wheels with 245/40 summer performance tires*
- Ten-way, leather/Alcantara® power sport seats including power lumbar support
- Leather-wrapped, flat-bottom, multifunction, sport steering wheel with shift paddles
- Auto-dimming interior mirror with compass
- Power-folding top (Roadster only)
- HomeLink® universal garage door opener and Bluetooth® mobile phone preparation
- Audi xenon plus headlights with LED daytime running lights

TT PRESTIGE

- Heated, Fine Nappa leather sport seats
- BOSE® Sound System with AudioPilot®
- Interior LED Lighting Package
- Audi Navigation plus* with real-time traffic and six-disc CD changer or available Audi music interface with iPod® integration
- Audi parking system rear

MODEL CONFIGURATIONS

- 2.0 TFSI® 211hp with six-speed S tronic® transmission and quattro® all-wheel drive

* See back cover for important information.
Standard feature highlights listed only. Please see
audiusa.com for all available options and packages.

TT Roadster Premium Plus





powerful

Sporty for a luxury vehicle, luxurious for a sportscar, the S6 is built for speed, harnessing the performance Audi is famous for. It delivers the seemingly unlimited power of the 435hp V10 engine and channels it through the legendary traction and handling of quattro® all-wheel drive. The interior of the S6 is as gorgeous as it is comfortable, surpassing all others in its class. With its peerless performance and taste, the S6 completely reinterprets what it means to be in the luxury vehicle category.

S6

STANDARD FEATURE HIGHLIGHTS

S6

- 19" five-parallel-spoke S design wheels with 265/35 summer performance tires*
- S tuned sport suspension
- S specific front/rear bumpers, doorsills and rocker panels
- Audi xenon plus adaptive headlights with LED daytime running lights and taillights
- S6 sport seats with eight-way power adjustment, and four-way power lumbar adjustment in Silk Nappa leather
- Gray Birch wood inlay
- S6 multifunction, sport steering wheel with Aluminum Optic shift paddles
- Heated front and rear seats
- BOSE® 5.1 Surround Sound with 13 speakers
- Audi music interface with iPod® integration
- Audi MMI® Navigation plus® with voice control, real-time traffic and HD Radio™ Technology
- Audi advanced key: keyless start/stop and entry
- Audi parking system with rearview camera
- HomeLink® universal garage door opener and Bluetooth®** mobile phone preparation

MODEL CONFIGURATIONS

- 5.2 FSI® 435hp with six-speed Tiptronic® automatic transmission and quattro® all-wheel drive

* See back cover for important information.
Standard feature highlights listed only. Please see audiusa.com for all available options and packages.

attitude

Classic coupe lines, handling born from the track and a high-performance V8 engine deliver a sensational driving experience. Starting at zero, 60 MPH rushes at you in a mere 4.9 seconds* thanks to the 354hp 4.2 FSI® engine.

It's obvious, the S5 has no peer. Standard quattro® all-wheel drive and the available Sport Rear Differential add handling that has to be experienced to be believed.



S5 Premium Plus



S5

STANDARD FEATURE HIGHLIGHTS

S5 PREMIUM PLUS

- 19" five-double-spoke wheels with 255/35 summer performance tires*
- S tuned sport suspension
- Audi xenon plus headlights with LED daytime running lights
- S5 eight-way, power heated, sport seats with four-way, power lumbar adjustment in Silk Nappa leather
- Brushed Aluminum inlays
- Audi music interface with iPod® integration
- HomeLink® universal garage door opener and Bluetooth® mobile phone preparation

S5 PRESTIGE

- Audi MMI® Navigation plus† with voice control and HD Radio™ Technology
- Bang & Olufsen® Sound System with 14 speakers
- Audi advanced key: keyless start/stop and entry
- Memory for driver seat and outside mirrors
- Audi parking system with rearview camera

MODEL CONFIGURATIONS

- 4.2 FSI® 354hp with six-speed manual transmission and quattro® all-wheel drive
- 4.2 FSI 354hp with six-speed Tiptronic® transmission and quattro all-wheel drive

*Top track speed for S5 electronically limited to 155 MPH in the U.S. Obey all local speed and traffic laws.

†See back cover for important information.

Standard feature highlights listed only. Please see audiusa.com for all available options and packages.





S5 Cabriolet Prestige



commanding

The 333hp 3.0T supercharged S5 Cabriolet is total performance with the top down. Its wide, low-slung stance and large wheels create a lean, aggressive look. Rich with both performance features and luxurious amenities, the S5 Cabriolet delivers pure driving pleasure and excitement.

S5 Cabriolet

STANDARD FEATURE HIGHLIGHTS

S5 CABRIOLET PREMIUM PLUS

- 19" five-double-spoke wheels with 255/35 summer performance tires*
- S tuned sport suspension
- Audi xenon plus headlights with LED daytime running lights
- S5 Cabriolet eight-way, power heated, sport seats with four-way, power lumbar adjustment in Silk Nappa leather
- Brushed Aluminum inlays
- Audi music interface with iPod® integration
- HomeLink® universal garage door opener and Bluetooth™ mobile phone preparation

S5 CABRIOLET PRESTIGE

- Audi MMI® Navigation plus* with HD Radio™ Technology
- Bang & Olufsen® Sound System with 14 speakers
- Audi advanced key: keyless start/stop and entry
- Memory for driver seat and outside mirrors
- Audi parking system with rearview camera

MODEL CONFIGURATIONS

- 3.0 TFSI® 333hp with seven-speed, dual-clutch S tronic® transmission and quattro® all-wheel drive

* See back cover for important information.
Standard feature highlights listed only. Please see audiusa.com for all available options and packages.

indulgent

The S4 delivers power and then some. Its 333hp, 325 lb-ft. of torque, 3.0T supercharged V6 can launch from a standstill to 60 MPH in an exhilarating 4.9 seconds. This is partially achieved through legendary Audi quattro® all-wheel drive with available Sport Rear Differential. It comes as no surprise then, that the Audi S4 is recognized as “Best in Test” by *Car and Driver* over other German sports sedans. Unbridled performance paired with total luxury make driving the S4 an experience unlike any other.





S4 Premium Plus

S4

STANDARD FEATURE HIGHLIGHTS

S4 PREMIUM PLUS

- 18" five-parallel-spoke S design wheels with 245/40 summer performance tires*
- S tuned sport suspension for more aggressive performance
- Audi xenon plus headlights with LED daytime running lights
- S4 eight-way, power heated, sport seats with four-way, power lumbar adjustment in Silk Nappa leather with Alcantara® inserts
- HomeLink® universal garage door opener and Bluetooth® mobile phone preparation
- Audi music interface with iPod® integration

S4 PRESTIGE

- 19" five-tri-spoke wheels with 255/35 summer performance tires*
- Audi MMI® Navigation plus™ with voice control and HD Radio™ Technology
- Bang & Olufsen® Sound System with 14 speakers
- Audi advanced key: keyless start/stop and entry
- Audi parking system with rearview camera
- Memory for driver seat and outside mirrors

MODEL CONFIGURATIONS

- 3.0 TFSI® 333hp with six-speed manual transmission and quattro® all-wheel drive
- 3.0 TFSI 333hp with seven-speed, dual-clutch S tronic® transmission and quattro all-wheel drive

* *Car and Driver*, November 2009.

† See back cover for important information.

Standard feature highlights listed only. Please see audiusa.com for all available options and packages.



impactful



TTS Coupe Prestige

The TTS is equipped with a 2.0 TFSI® engine that offers a substantial 265hp and 258 lb-ft. of torque. Combined with quattro® all-wheel drive and the lightning-fast, S tronic® dual-clutch transmission with launch control, the

TTS races from 0-60 in just 4.9 seconds.* Sports car handling and performance in an exceptional design makes the TTS the definitive model in this category.

TTS

STANDARD FEATURE HIGHLIGHTS

TTS PREMIUM PLUS

- 19" five-tri-spoke wheels with 255/35 summer performance tires[†]
- S Audi magnetic ride with 10 mm lowered chassis
- Audi xenon plus headlights with LED daytime running lights
- TTS specific front/rear bumpers, diffuser and rocker panels
- Ten-way, power seats in black or bicolor Silk Nappa leather
- Leather-wrapped, flat-bottom, multifunction, sport steering wheel with Aluminum Optic shift paddles
- Auto-dimming interior mirror with compass
- Audi concert radio with nine speakers and SIRIUS® Satellite Radio
- HomeLink® universal garage door opener and Bluetooth® mobile phone preparation

TTS PRESTIGE

- BOSE® Sound System with AudioPilot®
- Audi Navigation plus[†] with real-time traffic and six-disc CD changer or available Audi music interface with iPod® integration
- Heated front seats
- Interior LED Lighting Package
- Audi parking system rear

MODEL CONFIGURATIONS

- 2.0 TFSI® 265hp with six-speed S tronic® transmission and quattro® all-wheel drive

*TTS Coupe 0-60 MPH: 4.9 seconds.

†See back cover for important information.

Standard feature highlights listed only. Please see audiusa.com for all available options and packages.

indisputable





R8 Coupe 5.2

A rare and exclusive supercar with high design, captivating refinement and a heritage of racing dominance. With a mid-mounted 525hp V10, quattro® all-wheel drive and an aluminum and magnesium Audi Space Frame (ASF®), the R8 Coupe 5.2 offers handling and balance worthy of any racetrack. It's indisputable, the R8 5.2 raises the bar on power, speed and performance, inventing a new category altogether.

R8

Coupe 5.2

STANDARD FEATURE HIGHLIGHTS

R8

- 5.2 liter 525hp V10
- 19" ten-spoke wheels with summer performance tires*
- Carbon Fiber engine compartment inlays
- Full LED headlights; low beam, high beam, turn signals and daytime running lights
- Ten-way, power heated seats in Fine Nappa leather
- Audi Navigation plus* with real-time traffic and six-CD changer or Audi music interface with iPod® integration
- Bang & Olufsen® Sound System with twelve speakers and 465 watts of total output
- Audi parking system plus with rearview camera
- quattro® all-wheel drive
- HomeLink® universal garage door opener and Bluetooth™ mobile phone preparation
- Audi magnetic ride

MODEL CONFIGURATIONS

- 5.2 FSI* 525hp V10, four valves per cylinder, with FSI® direct injection, dry sump lubrication system, aluminum cylinder block and crank case

* See back cover for important information.
Standard feature highlights listed only. Please see audiusa.com for all available options and packages.

unleashed

The first open-top supercar from Audi, the R8 Spyder is beyond description. Its bold design is reflected in the hand-assembled aluminum, Carbon Fiber and magnesium body and Audi Space Frame (ASF®). Combining its handcrafted design with track-bred performance, the R8 Spyder stands alone.





R8

Spyder 5.2

STANDARD FEATURE HIGHLIGHTS

R8

- 5.2 liter 525hp V10
- 19" ten-spoke wheels with summer performance tires*
- Full LED headlights; low beam, high beam, turn signals and daytime running lights
- Ten-way, power heated seats in thermal resistant Fine Nappa leather
- Audi Navigation plus* with real-time traffic and six-CD changer or Audi music interface with iPod* integration
- Bang & Olufsen® Sound System with twelve speakers and 465 watts of total output
- Audi parking system plus with rearview camera
- quattro® all-wheel drive
- Bluetooth™ mobile phone preparation with safety belt microphone
- HomeLink® universal garage door opener
- Audi magnetic ride

MODEL CONFIGURATIONS

- 5.2 FSI* 525hp V10, four valves per cylinder, with FSI direct injection, dry sump lubrication system, aluminum cylinder block and crank case

R8 Spyder 5.2

* See back cover for important information.
Standard feature highlights listed only. Please see audiusa.com for all available options and packages.



unrelenting



R8 Coupe 4.2

R8

Coupe 4.2

STANDARD FEATURE HIGHLIGHTS

R8

- 4.2 liter 430hp V8
- 19" five-arm, double-spoke wheels with summer performance tires*
- Side blades in tone-on-tone contrast paint (Brilliant Red features matching color)
- Ten-way, power heated leather/Alcantara® sport seats
- Audi concert radio with six-disc CD changer and SIRIUS® Satellite Radio
- Audi xenon plus headlights with LED daytime running lights
- LED interior illumination
- quattro® all-wheel drive
- HomeLink® universal garage door opener and Bluetooth™ mobile phone preparation
- Audi magnetic ride

MODEL CONFIGURATIONS

- 4.2 FSI® 430hp V8, four valves per cylinder, with FSI® direct injection, dry sump lubrication system, aluminum cylinder block and crank case

The sportscar only Audi could make. The R8 Coupe 4.2 offers a high revving V8, producing 430hp in a mid-engine configuration. Exhilarating handling is attributable in part to the aluminum and magnesium Audi Space Frame (ASF®) and

quattro® all-wheel drive. No other vehicle in or out of its class offers the power and superior balance of excitement and refinement like the R8.

* See back cover for important information.
Standard feature highlights listed only. Please see audiusa.com for all available options and packages.

Audi Truth in Engineering

Note: A word about this brochure. Audi of America, Inc. believes the specifications in this brochure to be correct at the time of printing. However, specifications, standard equipment, options, and colors are subject to change without notice. Some equipment may be unavailable when your vehicle is built. Please ask your dealer for advice concerning current availability of standard and optional equipment, and your dealer will verify that your vehicle will include the equipment you ordered. Vehicles in this brochure are shown with optional equipment. See your dealer for complete details on the new-vehicle limited warranty, twelve-year limited warranty against corrosion perforation, and Audi 24/7 Roadside Assistance. [Roadside assistance coverage provided by Road America in the U.S. Certain conditions apply; see your dealer for details.] Tires supplied by various manufacturers. "Truth in Engineering" is a registered trademark of Audi of America, Inc. "Audi," "quattro," all model names, "Multitronic," "FrontTrak," "ASF," "S line," "S tronic," "MMI," "FSI," "Sideguard," "Singleframe", the Singleframe grille design, and the four rings logo are registered trademarks of AUDI AG. "Servotronic" is a registered trademark of the AM General Corporation. "Tiptronic" is a registered trademark of Dr. Ing h.c. F. Porsche AG. "Alcantara" is a registered trademark of Alcantara S.P.A. "HomeLink" is a registered trademark of Prince Corporation, Holland, Michigan. "SIRIUS" is a registered trademark of SIRIUS Satellite Radio, Inc. "Bluetooth" is a registered trademark of Bluetooth SIG. "iPod" and "iPhone" are registered trademarks of Apple Computer, Inc. HD Radio™ and the HD Radio logo are proprietary trademarks of iBiquity Digital Corporation. "BOSE" and "AudioPilot" are registered trademarks of the BOSE Corporation.

Summer performance tires are designed for optimum performance and handling in warm climates. They are not suitable for cold, snowy or icy weather conditions. If you drive under those circumstances, you should equip your vehicle with all-season or winter tires, which offer better traction under those conditions. We suggest you use the recommended winter or all-season tires specified for your car or their equivalent. These summer performance tires also have a lower aspect ratio that aids performance and handling. However, in order to avoid tire, rim or vehicle damage, it is important that the inflation pressure is regularly checked and maintained at recommended levels. Serious wheel and tire damage may occur if the vehicle is operated on rough or damaged road surfaces, or upon encountering road debris or obstacles. Please also remember in making your selection that, while these tires deliver responsive handling, they may ride less comfortably and make more noise than other choices. Finally, these tires may wear more quickly than other choices. For more information on all of these topics, please consult the owner's manual, your local dealer or call 1-800-FOR-AUDI.

Audi Navigation plus depends on signals from the worldwide Global Positioning Satellite network. The vehicle's electrical system, and existing wireless and satellite technologies, must be available and operating properly for the system to function. The system is designed to provide you with suggested routes in locating addresses, destinations and other points of interest. Changes in street names, construction zones, traffic flow, points of interest and other road system changes are beyond the control of Audi of America, Inc. Complete detailed mapping of lanes, roads, streets, toll roads, highways, etc., is not possible, therefore you may encounter discrepancies between the mapping and your actual location. Please rely on your individual judgement in determining whether or not to follow a suggested Audi Navigation plus route. Periodically, the mapping is updated, and a new DVD will be required in order to maintain the latest navigation information available to us. These will be available for purchase from time to time at an additional cost. Consult your dealer or call 1-800-FOR-AUDI for details.

Your Audi vehicle is equipped with a phone preparation utilizing Bluetooth interface to enable hands-free functionality (compatible mobile phones sold separately). You will need a Bluetooth-enabled mobile phone in order to utilize this function. Not all Bluetooth-enabled mobile phone models are compatible with Audi phone preparation. Visit audiusa.com/bluetooth, or contact your local Audi dealer for the latest listing of compatible phones. Audi recommends use of the Audi phone cradle (sold separately) with your mobile phone while operating this vehicle.

2011 | Full Line

Audi of America
Audiusa.com
[Facebook.com/Audi](https://www.facebook.com/Audi)

BR-FL-10-2000US

©2010 Audi of America, Inc.